

LAS VEGAS, NEVADA

AL-662 (FAA)

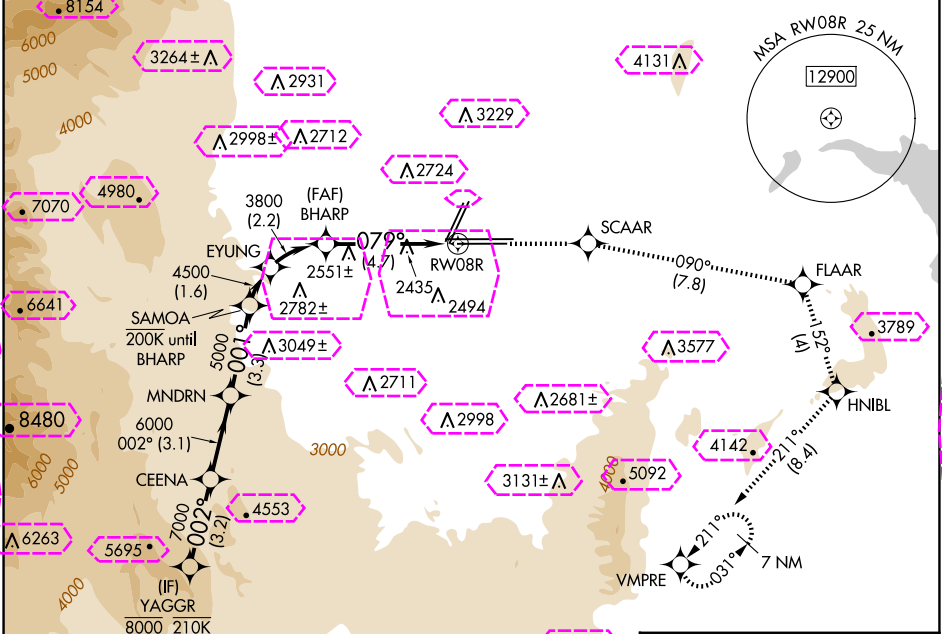
25051

APP CRS	Rwy Idg	10526
079°	TDZE	2157
	Apt Elev	2181

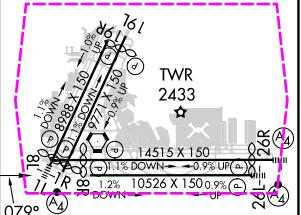
# RNAV (RNP) RWY 8R

HARRY REID INTL (LAS)

RNP AR APCH. RF required.		MISSED APPROACH: Climb to 7000 on the RNAV missed approach route to VMPRE and hold, continue climb-in-hold to 7000.		
▼ For uncompensated Baro-VNAV systems, procedure NA below 0°C or above 54°C.				
D-ATIS	LAS VEGAS APP CON	LAS VEGAS TOWER	GND CON	CLNC DEL
132.4	125.025 379.15 (West) 119.775 282.2 (East)	118.75 257.8 (Rwy 1L/19R, 1R/19L) 119.9 257.8 (Rwy 8L/26R, 8R/26L)	121.1 270.8 E of 1R/19L 121.9 254.3 W of 1L/19R	118.0
				CPDLC



ELEV 2181		TDZE 2157	
YAGGR	CEENA	MNDRN	SAMOA
8000	002°	7000	6000
GP 3.15°			
TCH 60			
3.2 NM	3.1 NM	3.3 NM	1.6 NM
2544-1 1/8	387 (400-1 1/8)		
2613-1 3/8	456 (500-1 3/8)		
AUTHORIZATION REQUIRED			



MIRL Rwy 1R-19L  
REIL Rwys 1R, 8R, 19L and 19R  
HIRL Rwys 1L-19R, 8L-26R and 8R-26L

LAS VEGAS, NEVADA

AL-662 (FAA)

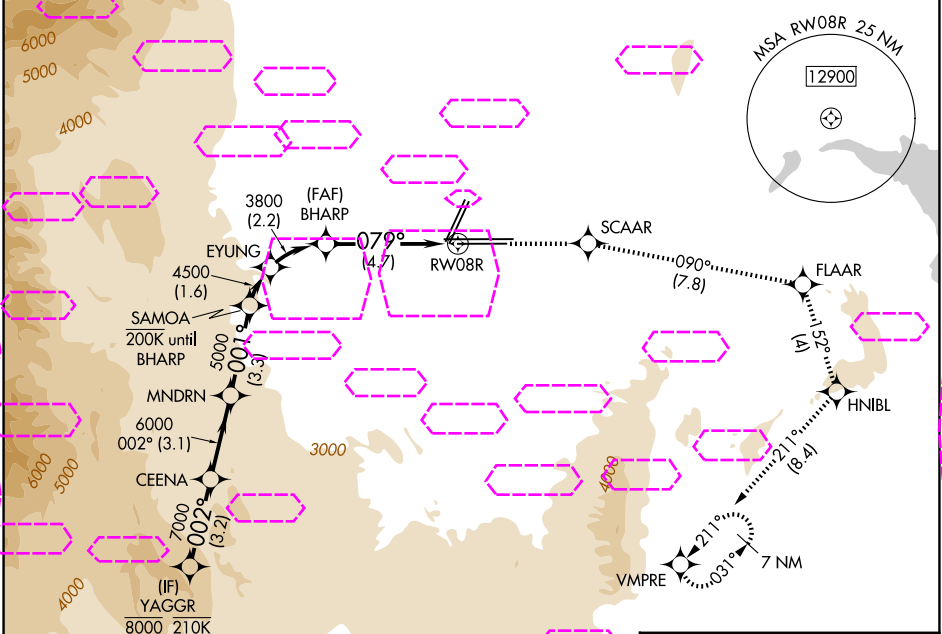
25219

APP CRS	Rwy Ldg	10526
079°	TDZE	2157
	Apt Elev	2181

# RNAV (RNP) RWY 8R

HARRY REID INTL (LAS)

RNP AR APCH. RF required.		MISSED APPROACH: Climb to 7000 on the RNAV missed approach route to VMPRE and hold, continue climb-in-hold to 7000.		
▼ For uncompensated Baro-VNAV systems, procedure NA below 0°C or above 54°C.				
D-ATIS	LAS VEGAS APP CON	LAS VEGAS TOWER	GND CON	CLNC DEL
132.4	125.025 379.15 (West) 119.775 282.2 (East)	118.75 257.8 (Rwy 1L/19R, 1R/19L) 119.9 257.8 (Rwy 8L/26R, 8R/26L)	121.1 270.8 E of 1R/19L 121.9 254.3 W of 1L/19R	118.0
				CPDLC



(RNP 0.30)

ELEV 2181

D

TDZE 2157

YAGGR

7000

SCAAR

FLAAR

tr 090°

HNIBL

tr 152°

VMPRE

CEENA

MNDRN

SAMOA

EYUNG

BHARP

RW08R

8000

002°

7000

6000

5000

4500

3800

079°

GP 3.15°

TCH 60

3.2 NM

3.1 NM

3.3 NM

1.6 NM

2.2 NM

4.7 NM

CATEGORY

A

B

C

D

RNP 0.10 DA

2544-1 1/8 387 (400-1 1/8)

RNP 0.30 DA

2613-1 3/8 456 (500-1 3/8)

AUTHORIZATION REQUIRED

MIRL Rwy 1R-19L

REIL Rwys 1R, 8R, 19L and 19R

HIRL Rwys 1L-19R, 8L-26R and 8R-26L

LAS VEGAS, NEVADA

Orig 25FEB21

36°05'N-115°09'W

HARRY REID INTL (LAS)

# RNAV (RNP) RWY 8R