

LAS VEGAS, NEVADA

AL-662 (FAA)

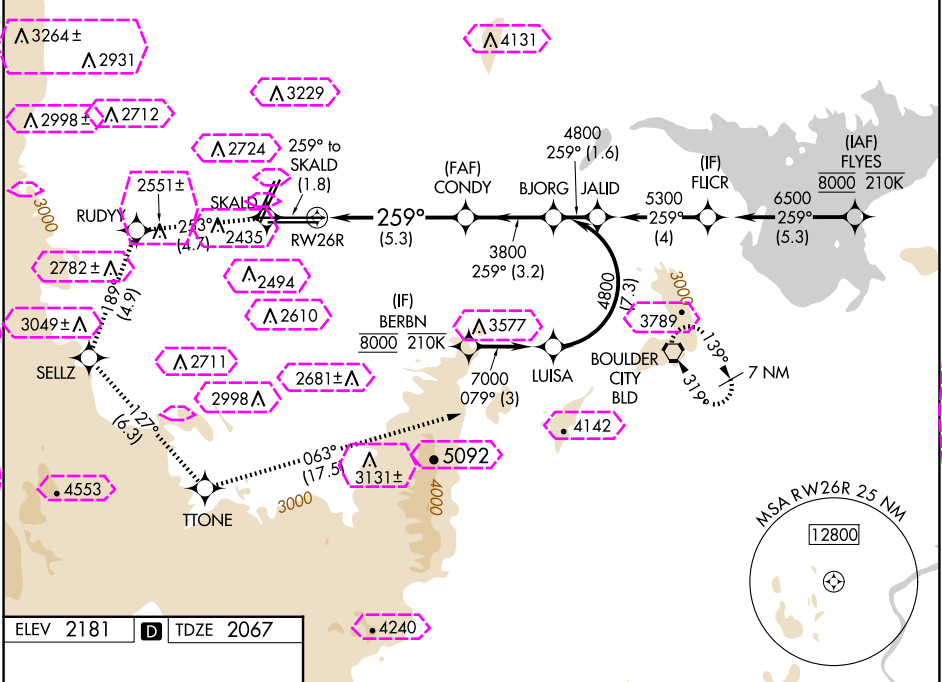
25051

APP CRS	Rwy Idg	12638
259°	TDZE	2067
	Apt Elev	2181

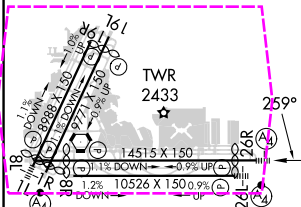
RNAV (RNP) RWY 26R

HARRY REID INTL (LAS)

RNP AR APCH-GPS.		MALS	MISSED APPROACH: Cimb to 7000 on the RNAV missed approach route to BLD VORTAC and hold.	
For uncompensated Baro-VNAV systems, procedure NA below -1°C or above 54°C.			*Missed approach requires minimum climb of 230 feet per NM to 3200.	
D-ATIS	LAS VEGAS APP CON	LAS VEGAS TOWER	GND CON	CLNC DEL
132.4	125.025 379.15 (West) 119.775 282.2 (East)	118.75 257.8 (Rwy 1L/19R, 1R/19L) 119.9 257.8 (Rwy 8L/26R, 8R/26L)	121.1 270.8 E of 1R/19L 121.9 254.3 W of 1L/19R	118.0
				CPDLC



ELEV 2181	TDZE 2067
-----------	-----------



7000	SKALD	RUDYY	SELLY	TITONE	BLD
tr 259°	tr 253°	tr 189°	tr 127°	tr 063°	
VGSI and RNAV glidepath not coincident (VGSI Angle 3.00/TCH 84).					
See planview for multiple IF locations.					
GP 3.00° TCH 60					
CATEGORY	A	B	C	D	
RNP 0.30 DA*	2457-7/8 390 (300-7/8)				
RNP 0.30 DA	2508-1 441 (400-1)				

MIRL Rwy 1R-19L
REIL Rwy 1R, 8R, 19L and 19R
HIRL Rwy 1L-19R, 8L-26R and 8R-26L

LAS VEGAS, NEVADA
Amdt 1 19MAY22

36°05'N-115°09'W

HARRY REID INTL (LAS)
RNAV (RNP) RWY 26R

LAS VEGAS, NEVADA

AL-662 (FAA)

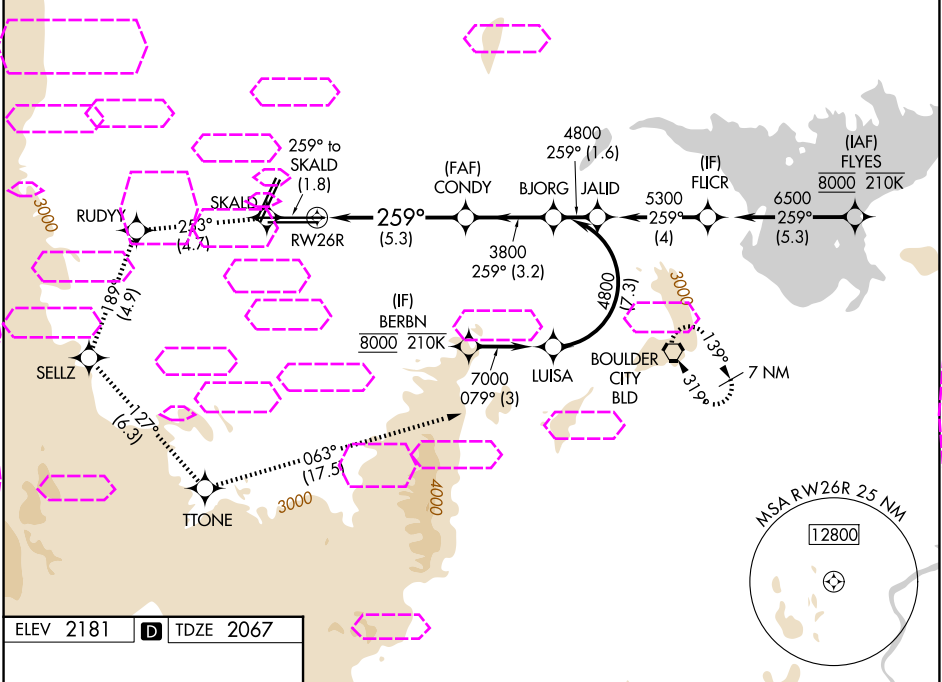
25219

APP CRS	Rwy Ldg	12638
259°	TDZE	2067
	Apt Elev	2181

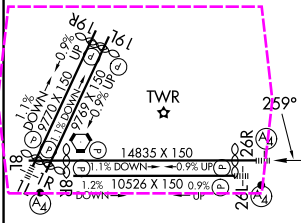
RNAV (RNP) RWY 26R

HARRY REID INTL (LAS)

RNP AR APCH-GPS.		MALS	MISSED APPROACH: Cimb to 7000 on the RNAV missed approach route to BLD VORTAC and hold.	
For uncompensated Baro-VNAV systems, procedure NA below -1°C or above 54°C.			* Missed approach requires minimum climb of 230 feet per NM to 3200.	
D-ATIS	LAS VEGAS APP CON	LAS VEGAS TOWER	GND CON	CLNC DEL
132.4	125.025 379.15 (West) 119.775 282.2 (East)	118.75 257.8 (Rwy 1L/19R, 1R/19L) 119.9 257.8 (Rwy 8L/26R, 8R/26L)	121.1 270.8 E of 1R/19L 121.9 254.3 W of 1L/19R	118.0
				CPDLC



ELEV 2181	TDZE 2067
-----------	-----------



7000	SKALD	RUDYY	SELLZ	TTONE	BLD
tr 259°	tr 253°	tr 189°	tr 127°	tr 063°	
VGSi and RNAV glidepath not coincident (VGSi Angle 3.00/TCH 84).					
See planview for multiple IF locations.					
CATEGORY A B C D					
RNP 0.30 DA* 2457-7/8 390 (300-7/8)					
RNP 0.30 DA 2508-1 441 (400-1)					
AUTHORIZATION REQUIRED					

LAS VEGAS, NEVADA

Amdt 1 19MAY22

36°05'N-115°09'W

RNAV (RNP) RWY 26R

SW-4, 07 AUG 2025 to 04 SEP 2025

SW-4, 07 AUG 2025 to 04 SEP 2025