

LAS VEGAS, NEVADA

AL-662 (FAA)

25051

WAAS CH <b>42800</b> <b>W01A</b>	APP CRS <b>014°</b>	Rwy Idg <b>3785</b> TDZE <b>2170</b> Apt Elev <b>2181</b>
--	------------------------	---

# RNAV (GPS) RWY 1R

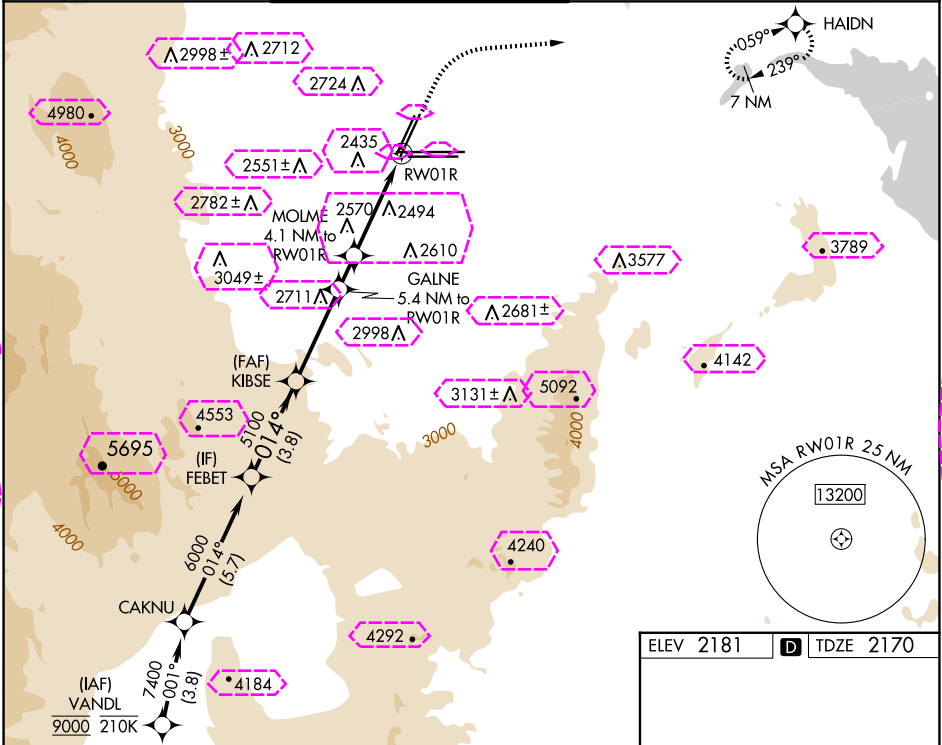
HARRY REID INTL (LAS)

RNP APCH - GPS. RADAR required.

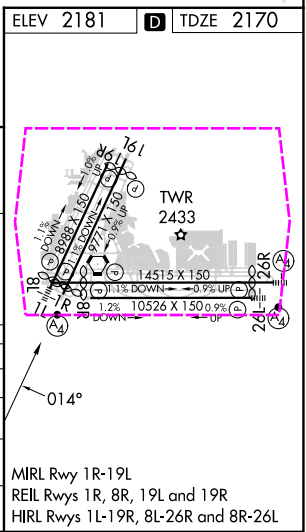
MISSED APPROACH: Climb to 2700 then climbing right turn to 7000 direct HADN and hold, continue climb-in-hold to 7000.

Rwy 1R helicopter visibility reduction below 3/4 SM NA. For uncompensated Baro-VNAV systems, LNAV/VNAV NA below 0°C or above 54°C.

D-ATIS <b>132.4</b>	LAS VEGAS APP CON <b>125.025 379.15</b> (West) <b>119.775 282.2</b> (East)	LAS VEGAS TOWER <b>118.75 257.8</b> (Rwy 1L/19R, 1R/19L) <b>119.9 257.8</b> (Rwy 8L/26R, 8R/26L)	GND CON <b>121.1 270.8</b> E of 1R/19L <b>121.9 254.3</b> W of 1L/19R	CLNC DEL <b>118.0</b>	CPDLC
------------------------	--	--	---	--------------------------	-------



FEBET		VGSI and RNAV glidepath not coincident (VGSI Angle 3.00/TCH 76).				2700	7000	HAIDN
GP 3.00° TCH 60		5100	3940	3520	2.2 NM to RW01R	RW01R		
3.8 NM		3.6 NM	1.3 NM	1.8 NM	2.2 NM			
CATEGORY	A	B	C	D				
LPV DA	2458-7⁄8		288 (300-%)					
LNAV/ VNAV DA	2641-13⁄8		471 (500-13⁄8)					
LNAV MDA	2960-1 790 (800-1)	2960-1¼ 790 (800-1¼)	2960-2½	790 (800-2½)				
<b>CIRCLING</b>	3020-1¼ 839 (900-1¼)	3060-1¼ 879 (900-1¼)	3100-2¾ 919 (1000-2¾)	3540-3 1359 (1400-3)				



LAS VEGAS, NEVADA  
Amdt 5 31OCT24

36°05'N-115°09'W

# RNAV (GPS) RWY 1R

SW-4, 10 JUL 2025 to 07 AUG 2025

SW-4, 10 JUL 2025 to 07 AUG 2025

LAS VEGAS, NEVADA

AL-662 (FAA)

25219

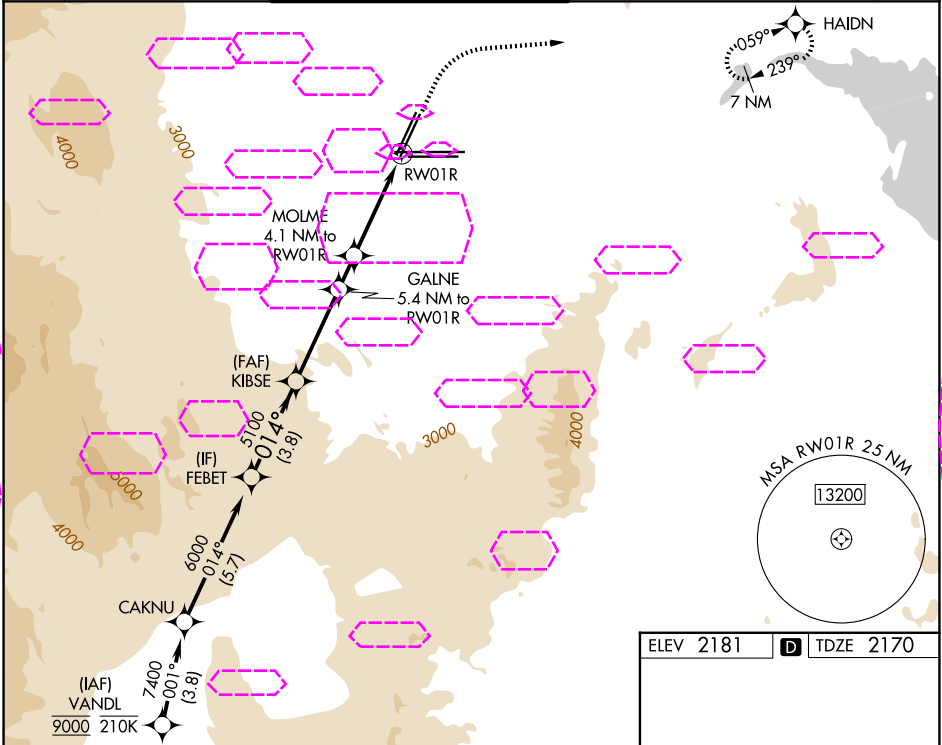
WAAS CH <b>42800</b> <b>W01A</b>	APP CRS <b>014°</b>	Rwy Ldg TDZE <b>2170</b> Apt Elev <b>2181</b>
--	------------------------	---

# RNAV (GPS) RWY 1R

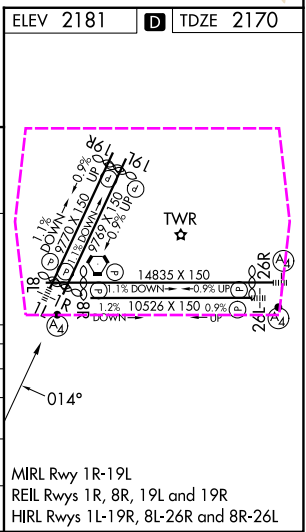
HARRY REID INTL (LAS)

RNP APCH - GPS. RADAR required.	MISSED APPROACH: Climb to 2700 then climbing right turn to 7000 direct HAI DN and hold, continue climb-in-hold to 7000.
Rwy 1R helicopter visibility reduction below 3/4 SM NA. For uncompensated Baro-VNAV systems, LNAV/VNAV NA below 0°C or above 54°C.	

D-ATIS <b>132.4</b>	LAS VEGAS APP CON <b>125.025 379.15</b> (West) <b>119.775 282.2</b> (East)	LAS VEGAS TOWER <b>118.75 257.8</b> (Rwy 1L/19R, 1R/19L) <b>119.9 257.8</b> (Rwy 8L/26R, 8R/26L)	GND CON <b>121.1 270.8</b> E of 1R/19L <b>121.9 254.3</b> W of 1L/19R	CLNC DEL <b>118.0</b>	CPDLC
------------------------	--	--	---	--------------------------	-------



FEBET		VGSI and RNAV glidepath not coincident (VGSI Angle 3.00/TCH 76).		2700	7000	HAI DN
GP 3.00° TCH 60		5100	3940	3520		
3.8 NM		3.6 NM	1.3 NM	1.8 NM	2.2 NM	
CATEGORY	A	B	C	D		
LPV DA	2458-7/8		288 (300-7/8)			
LNAV/VNAV DA	2641-13/8		471 (500-13/8)			
LNAV MDA	2960-1 790 (800-1)		2960-2 1/2 790 (800-2 1/2)			
CIRCLING	3020-1 1/4 839 (900-1 1/4)		3100-2 3/4 919 (1000-2 3/4)		3540-3 1359 (1400-3)	



LAS VEGAS, NEVADA  
Amdt 5 31OCT24

36°05'N-115°09'W

HARRY REID INTL (LAS)  
**RNAV (GPS) RWY 1R**

SW-4, 07 AUG 2025 to 04 SEP 2025

SW-4, 07 AUG 2025 to 04 SEP 2025