

ILS Z or LOC Z RWY 26L
HARRY REID INTL (LAS)

MISSED APPROACH: Climb to 3200 then climbing right turn to 6000 heading 080° and on BLD R-287 to BLD VORTAC and hold, continue climb-in-hold to 6000.

SW-4, 10 JUL 2025 to 07 AUG 2025

MIRM Rwy 1R-19L
 REIL Rwy 1R, 8R, 19L and 19R
 HIRL Rwy 1L-19R, 8L-26R and 8R-26L

LOC/DME I-RLE	APP CRS	26L	26R
<u>111.5</u>	259°	Rwy Ldg 10526	12638
Chan 52		TDZE 2069	2067
		Apt Elev 2181	2181

ILS Z or LOC Z RWY 26L
HARRY REID INTL (LAS)

DME required.

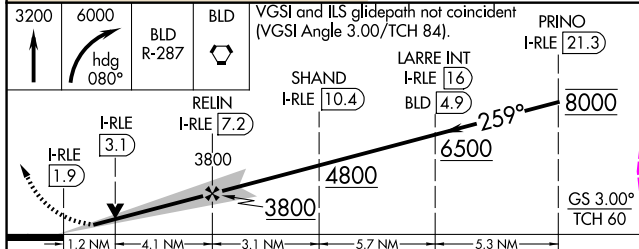
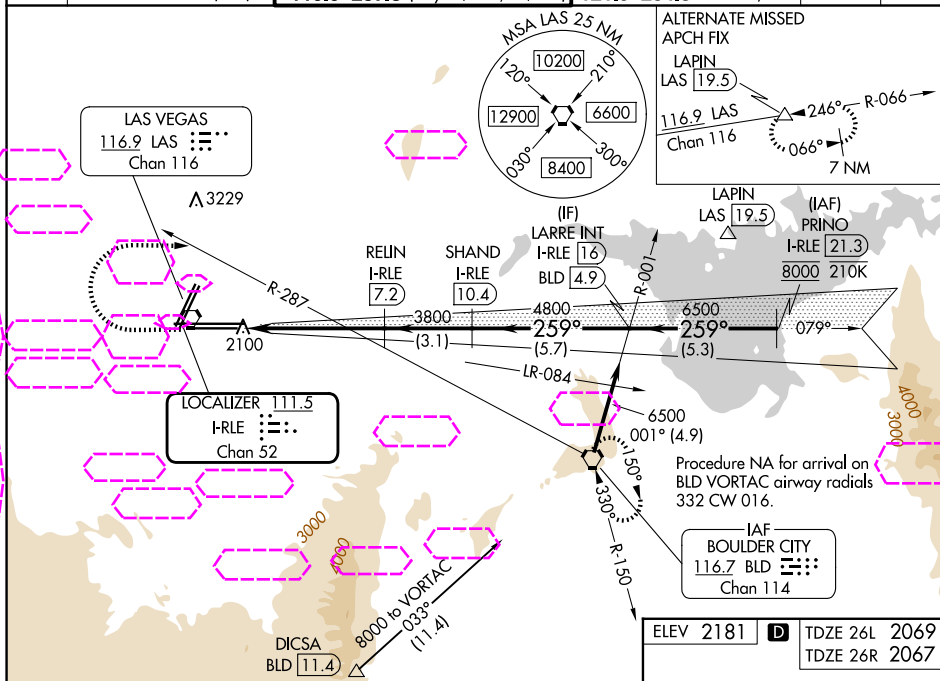
T Inop table does not apply to S-ILS 26L and Sidestep 26R.
A For inop ALS, increase S-LOC 26L Cat C/D/E visibility to 1 3/8 SM.

MALSF
Rwy 26

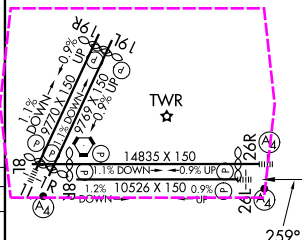

MALS
Rwy 26R
ⓐ

MISSED APPROACH: Climb to 3200 then climbing right turn to 6000 heading 080° and on BLD R-287 to BLD VORTAC and hold, continue climb-in-hold to 6000.

D-ATIS	LAS VEGAS APP CON	LAS VEGAS TOWER	GND CON	CLNC DEL	CPDLC
132.4	125.025 379.15 (West)	118.75 257.8 (Rwy 1L/19R, 1R/19L)	121.1 270.8 E of 1R/19L	118.0	
	119.775 282.2 (East)	119.9 257.8 (Rwy 8L/26R, 8R/26L)	121.9 254.3 W of 1L/19R		



CATEGORY	A	B	C	D	E
S-ILS 26L	2269- $\frac{3}{4}$ 200 (100- $\frac{3}{4}$)				
S-LOC 26L	2520- $\frac{3}{4}$ 451 (400- $\frac{3}{4}$)		2520-1 451 (400-1)		
SIDESTEP 26R	2560-1 493 (400-1)		2560-1 $\frac{1}{2}$ 493 (400-1 $\frac{1}{2}$)	2560-2 493 (400-2)	
CIRCLING	3020-1 $\frac{1}{4}$ 839 (900-1 $\frac{1}{4}$)	3060-1 $\frac{1}{4}$ 879 (900-1 $\frac{1}{4}$)	3100-2 $\frac{3}{4}$ 919 (1000-2 $\frac{3}{4}$)	3540-3 1359 (1400-3)	



MIRL Rwy 1R-19L
REIL Rwy 1R, 8R, 19L and 19R
HIRL Rwy 1L-19R, 8L-26R and 8R-26L