



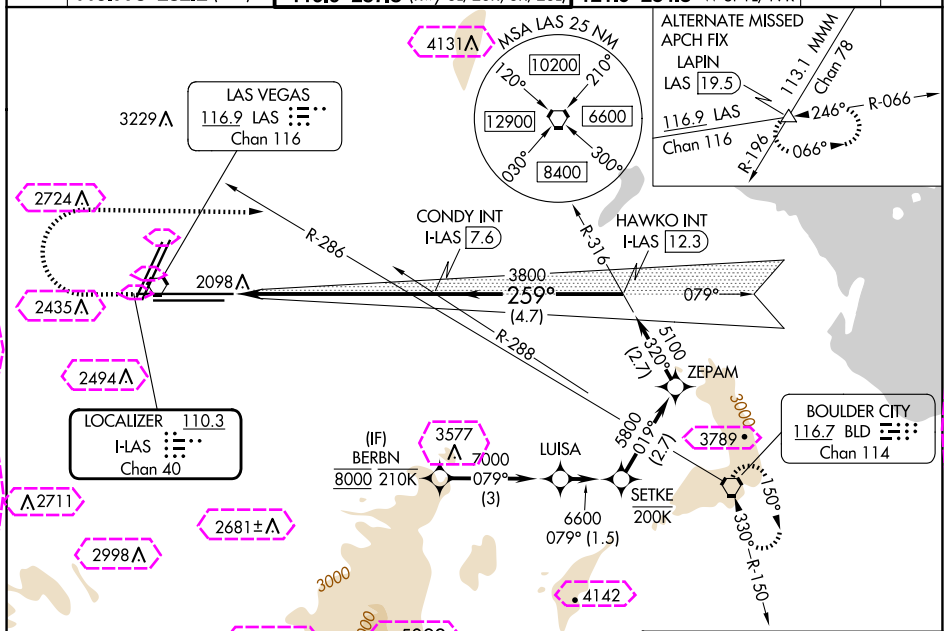
25051

LOC/DME FAS	APP CRS	Rwy Idg	26R	26L
110.3	259°	TDZE	12638	10526
Chan 40		Apt Elev	2067	2069
			2181	2181

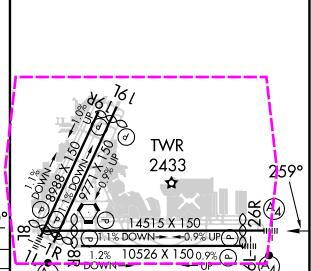
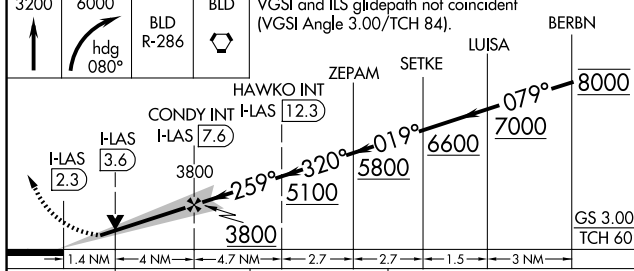
ILS Y or LOC Y RWY 26R
HARRY REID INTL (LAS)

<p>T Inop table does not apply to Sidestep 26L. For inop ALS, increase S-ILS-26R all Cats visibility to ½ SM.</p>	<p>A</p>	<p>RNP APCH - GPS.</p>	<p>MALS Rwy 26R</p> 	<p>MALSF Rwy 26L</p> 	<p>MISSED APPROACH: Climb to 3200 then climbing right turn to 6000 heading 080° and on BLD R-286 to BLD VORTAC and hold, continue climb-in-hold to 6000.</p>
--	-----------------	------------------------	---	--	--

D-ATIS	LAS VEGAS APP CON	LAS VEGAS TOWER	GND CON	CLNC DEL	CPDLC
132.4	125.025 379.15 (West) 119.775 282.2 (East)	118.75 257.8 (Rwy 1L/19R, 1R/19L) 119.9 257.8 (Rwy 8L/26R, 8R/26L)	121.1 270.8 E of 1R/19L 121.9 254.3 W of 1L/19R	118.0	



3131±A				ELEV 2181		D	TDZE 26R	2067
							TDZE 26L	2069



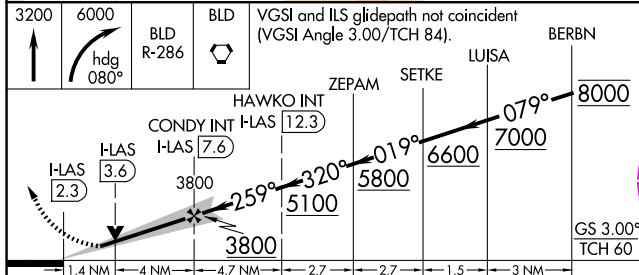
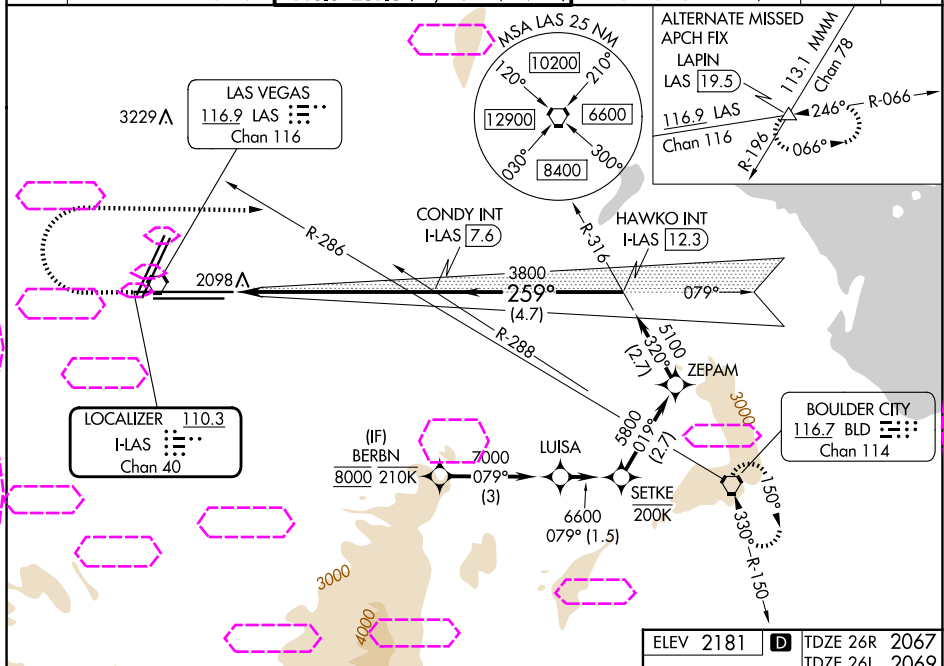
CATEGORY	A	B	C	D	<div>④</div> <div>⑤</div>												
S-ILS 26R	2334-¾ 267 (200-¾)																
S-LOC 26R	2560-¾ 493 (400-¾)		2560-1½ 493 (400-1½)			MIRL Rwy 1R-19L REIL Rwys 1R, 8R, 19L and 19R HIRL Rwys 1L-19R, 8L-26R and 8R-26L											
SIDESTEP 26L	2560-1 491 (400-1)		2560-1½ 491 (400-½)	2560-2 491 (400-2)		FAF to MAP 5.3 NM											
CIRCLING	3020-1¼ 839 (900-1¼)	3060-1¼ 879 (900-1¼)	3100-2¾ 919 (1000-2¾)	3540-3 1359 (1400-3)		<table><tr><td>Knots</td><td>60</td><td>90</td><td>120</td><td>150</td><td>180</td></tr><tr><td>Min:Sec</td><td>5:18</td><td>3:32</td><td>2:39</td><td>2:07</td><td>1:46</td></tr></table>	Knots	60	90	120	150	180	Min:Sec	5:18	3:32	2:39	2:07
Knots	60	90	120	150	180												
Min:Sec	5:18	3:32	2:39	2:07	1:46												

25219

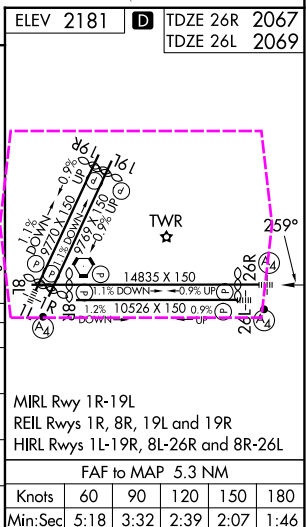
LOC/DME FAS	APP CRS	26R	26L
<u>110.3</u>	259°	Rwy Ldg 12638	10526
Chan 40		TDZE 2067	2069
		Apt Elev 2181	2181

ILS Y or LOC Y RWY 26R
HARRY REID INTL (LAS)

RNP APCH - GPS.		MALS Rwy 26R	MALSF Rwy 26L	MISSED APPROACH: Climb to 3200 then climbing right turn to 6000 heading 080° and on BLD R-286 to BLD VORTAC and hold, continue climb-in-hold to 6000.			
<div><div></div><div>Inop table does not apply to Sidestep 26L. For inop ALS, increase S-ILS-26R all Cats visibility to ½ SM.</div></div>		<div><div></div></div>	<div><div></div></div>				
D-ATIS 132.4	LAS VEGAS APP CON 125.025 379.15 (West) 119.775 282.2 (East)	LAS VEGAS TOWER 118.75 257.8 (Rwy 1L/19R, 1R/19L) 119.9 257.8 (Rwy 8L/26R, 8R/26L)		GND CON 121.1 270.8 E of 1R/19L 121.9 254.3 W of 1L/19R		CLNC DEL 118.0	CPDLC



CATEGORY	A	B	C	D
S-ILS 26R	2334- $\frac{3}{4}$ 267 (200- $\frac{3}{4}$)			
S-LOC 26R	2560- $\frac{3}{4}$ 493 (400- $\frac{3}{4}$)		2560-1 $\frac{1}{8}$ 493 (400-1 $\frac{1}{8}$)	
SIDESTEP 26L	2560-1 491 (400-1)		2560-1 $\frac{1}{2}$ 491 (400-1 $\frac{1}{2}$)	2560-2 491 (400-2)
CIRCLING	3020-1 $\frac{1}{4}$ 839 (900-1 $\frac{1}{4}$)	3060-1 $\frac{1}{4}$ 879 (900-1 $\frac{1}{4}$)	3100-2 $\frac{3}{4}$ 919 (1000-2 $\frac{3}{4}$)	3540-3 1359 (1400-3)



LAS VEGAS, NEVADA
Orig 05OCT23

36°05'N-115°09'W

HARRY REID INTL (LAS)

ILS Y or LOC Y RWY 26R

SW-4, 07 AUG 2025 to 04 SEP 2025

SW-4, 07 AUG 2025 to 04 SEP 2025