

LAS VEGAS, NEVADA

AL-662 (FAA)

25051

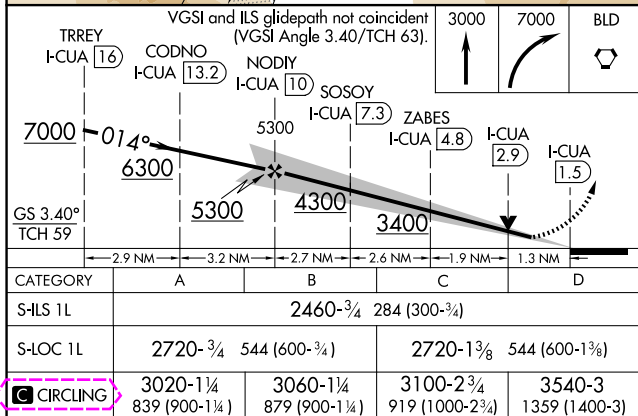
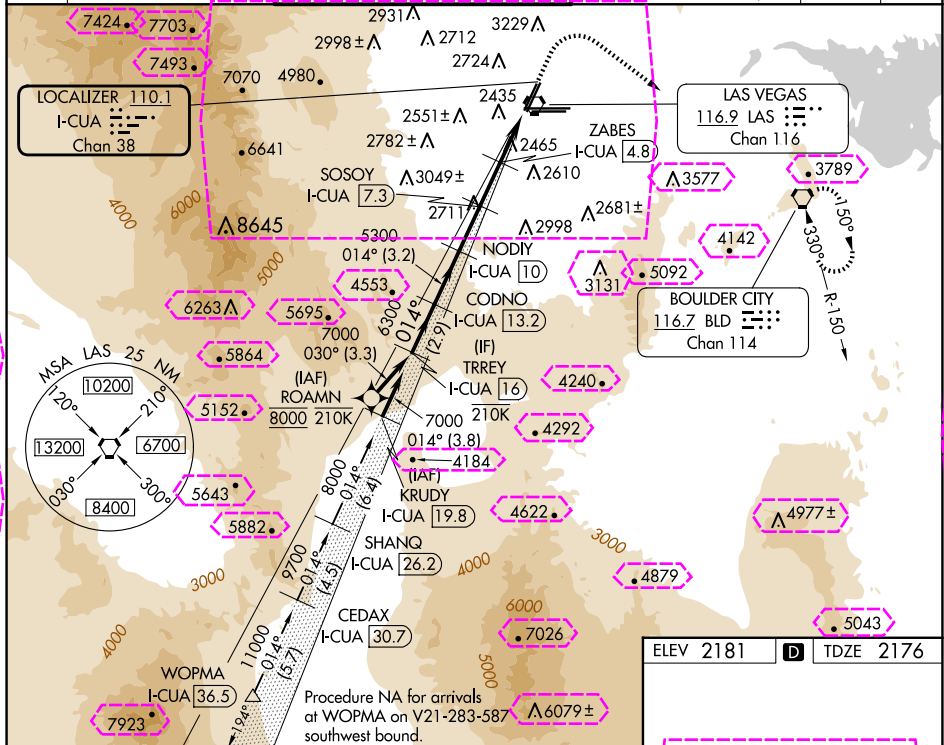
LOC/DME I-CUA	APP CRS	Rwy Idg	8401
110.1	014°	TDZE	2176
Chan 38		Apt Elev	2181

ILS or LOC RWY 1L

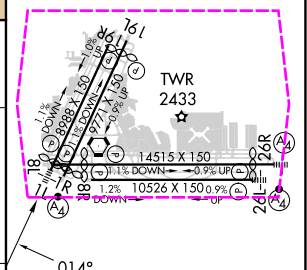
HARRY REID INTL (LAS)

DME required. RNP APCH-GPS. From ROAMN.	MALSF	MISSED APPROACH: Climb to 3000 then climbing right turn to 7000 direct BLD VORTAC and hold, continue climb-in-hold to 7000.
▼ Rwy 1L helicopter visibility reduction below ¾ SM NA. ▲ For inop ALS, increase S-ILS 1L all Cats visibility to ¾ SM.		

D-ATIS	LAS VEGAS APP CON	LAS VEGAS TOWER	GND CON	CLNC DEL	CPDLC
132.4	125.025 379.15 (West) 119.775 282.2 (East)	118.75 257.8 (Rwy 1L/19R, 1R/19L) 119.9 257.8 (Rwy 8L/26R, 8R/26L)	121.1 270.8 E of 1R/19L 121.9 254.3 W of 1L/19R	118,0	



ELEV 2181	TDZE 2176
-----------	-----------



LAS VEGAS, NEVADA

AL-662 (FAA)

25219

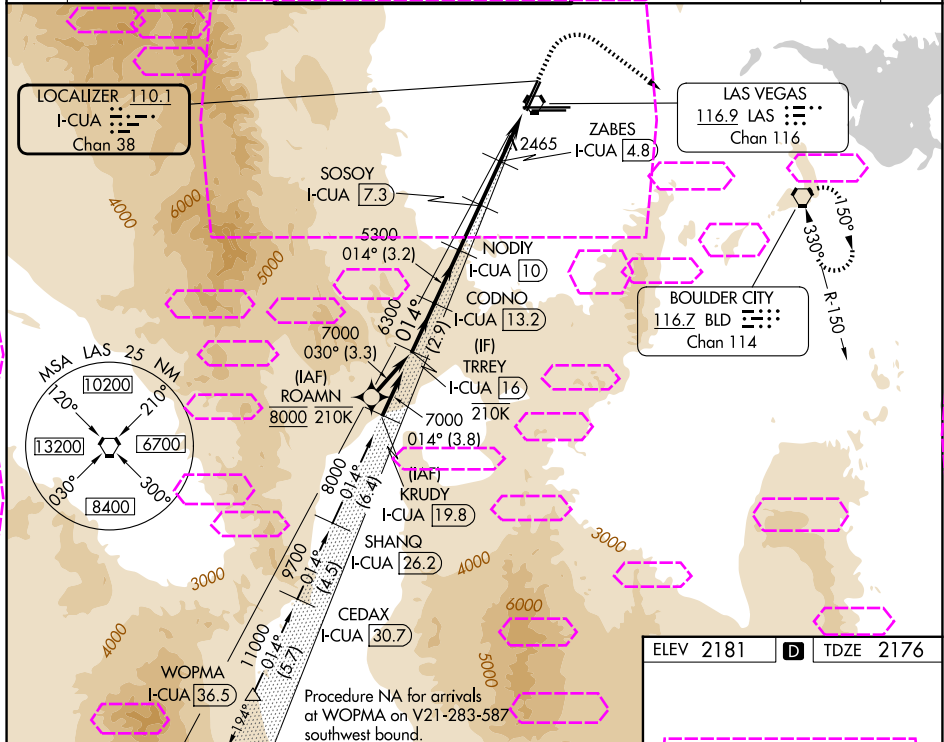
LOC/DME I-CUA	APP CRS	Rwy Ldg	8402
110.1	014°	TDZE	2176
Chan 38		Apt Elev	2181

ILS or LOC RWY 1L

HARRY REID INTL (LAS)

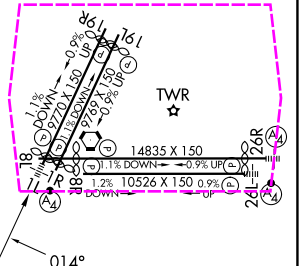
DME required. RNP APCH-GPS. From ROAMN.	MALSF	MISSED APPROACH: Climb to 3000 then climbing right turn to 7000 direct BLD VORTAC and hold, continue climb-in-hold to 7000.
Rwy 1L helicopter visibility reduction below 3/4 SM NA. For inop ALS, increase S-ILS 1L all Cats visibility to 7/8 SM.		

D-ATIS	LAS VEGAS APP CON	LAS VEGAS TOWER	GND CON	CLNC DEL	CPDLC
132.4	125.025 379.15 (West) 119.775 282.2 (East)	118.75 257.8 (Rwy 1L/19R, 1R/19L) 119.9 257.8 (Rwy 8L/26R, 8R/26L)	121.1 270.8 E of 1R/19L 121.9 254.3 W of 1L/19R	118.0	



TRREY I-CUA 16	CODNO I-CUA 13.2	NODIY I-CUA 10	SOSOY I-CUA 7.3	ZABES I-CUA 4.8	I-CUA 2.9	I-CUA 1.5
7000	6300	5300	4300	3400		
GS 3.40°	TCH 59					
2.9 NM	3.2 NM	2.7 NM	2.6 NM	1.9 NM	1.3 NM	
CATEGORY	A	B	C	D		
S-ILS 1L	2460-3/4 284 (300-3/4)					
S-LOC 1L	2720-3/4 544 (600-3/4)		2720-13/8 544 (600-13/8)			
CIRCLING	3020-11/4 839 (900-11/4)	3060-11/4 879 (900-11/4)	3100-23/4 919 (1000-23/4)	3540-3 1359 (1400-3)		

ELEV 2181	TDZE 2176
-----------	-----------



LAS VEGAS, NEVADA
Amdt 4 19MAY22

36°05'N-115°09'W

HARRY REID INTL (LAS)
ILS or LOC RWY 1L

SW-4, 07 AUG 2025 to 04 SEP 2025

SW-4, 07 AUG 2025 to 04 SEP 2025