

(GIDGT2, GIDGT) 24249

AL-662 (FAA)

HARRY REID INTL (LAS)
LAS VEGAS, NEVADA

GIDGT TWO DEPARTURE (RNAV) Departure Routes

SW-4, 10 JUL 2025 to 07 AUG 2025

DEPARTURE ROUTE DESCRIPTION

TAKEOFF RUNWAYS 1L/R: Climb on heading 014° to intercept course 072° to KYBAD, then on track 072° to HAIDN, then on track 073° to cross AIRRO at or above 11 500 and at or below 250K, then on track 075° to GIDGT, thence. . . .

TAKEOFF RUNWAYS 8L/R: Climb on heading 079° to 2682, then direct AYUJH, cross AYUJH at or above 6000, then on track 079° to MLVIN, then on track 064° to cross GEEZY at or above 12 000, then on track 065° to cross JETTIG at or below 14 000, then on track 065° to GIDGT, thence. . . .

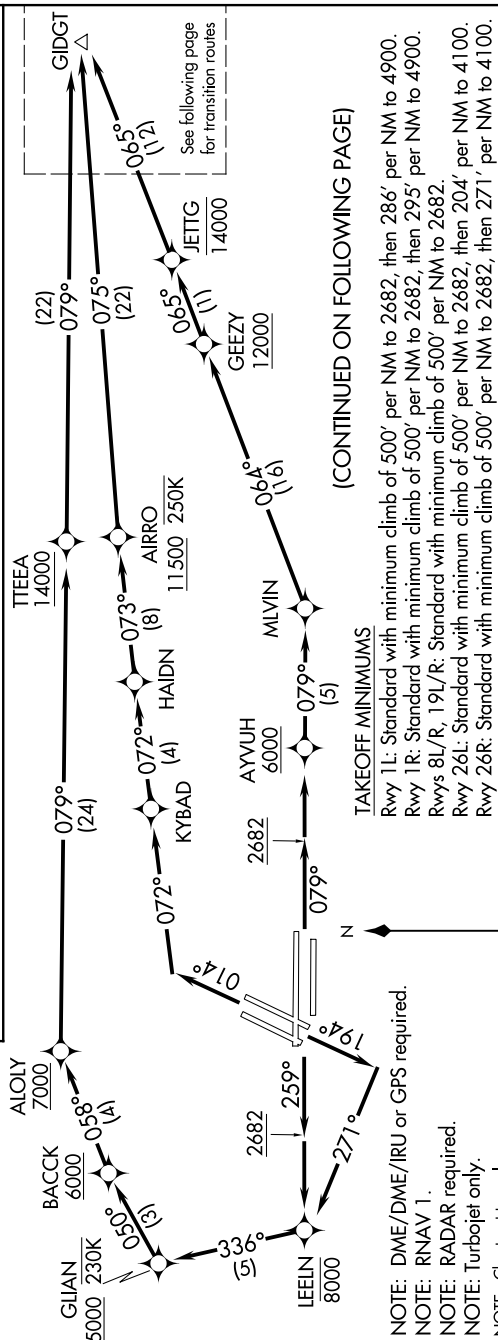
TAKEOFF RUNWAYS 19L/R: Climb on heading 194° to intercept course 271° to cross LEELN at or below 8000, then on track 336° to cross GJIAN at or above 5000 and at or below 230K, then on track 050° to cross BACCK at or above 6000, then on track 058° to cross ALOLY at or above 7000, then on track 079° to cross TTEEA at or above 14 000, then on track 079° to GIDGT, thence. . . .

TAKEOFF RUNWAYS 26L/R: Climb on heading 259° to 2682, then direct LEELN to cross LEELN at or below 8000, then on track 336° to cross GJIAN at or above 5000 and at or below 230K, then on track 050° to cross BACCK at or above 6000, then on track 058° to cross ALOLY at or above 7000, then on track 079° to cross TTEEA at or above 14 000, then on track 079° to GIDGT, thence. . . .

. . . .on (transition). Maintain FL190. Expect filed altitude 10 minutes after departure.

DATS
132.4
CLNC DEL
118.0
CPDIC
GND CON
121.1 270.8 E of 1R/19L
121.9 254.3 W of 1L/19R
LAS VEGAS TOWER
118.75 257.8 (Rwys 1L/19R, 1R/19L)
119.9 257.8 (Rwys 8L/26R, 8R/26L)
LAS VEGAS DEP CON
133.95 353.7

TOP ALTITUDE:
FL190



(CONTINUED ON FOLLOWING PAGE)

TAKEOFF MINIMUMS

Rwy 1L: Standard with minimum climb of 500' per NM to 2682, then 286' per NM to 4900.
Rwy 1R: Standard with minimum climb of 500' per NM to 2682, then 295' per NM to 4900.
Rwys 8L/R, 19L/R: Standard with minimum climb of 500' per NM to 2682.
Rwy 26L: Standard with minimum climb of 500' per NM to 2682, then 204' per NM to 4100.
Rwy 26R: Standard with minimum climb of 500' per NM to 2682, then 271' per NM to 4100.

NOTE: DME/DME/IRU or GPS required.
NOTE: RNAV 1.
NOTE: RADAR required.
NOTE: Turbojet only.
NOTE: Chart not to scale.

GIDGT TWO DEPARTURE (RNAV) Departure Routes

(GIDGT2, GIDGT) 27JAN22

LAS VEGAS, NEVADA
HARRY REID INTL (LAS)

SW-4, 10 JUL 2025 to 07 AUG 2025

GIDGT THREE DEPARTURE (RNAV) Departure Routes

TOP ALTITUDE:
FL190

RNAV 1 - DME/DME/IRU or GPS.

RADAR required for non-GPS equipped aircraft.

LAS VEGAS DEP CON

133.95 353.7

D-ATIS

132.4

CLINC DEL

118.0

CPDLC

GND CON

121.1 270.8 E of 1R/19L

121.9 254.3 W of I
LAS VEGAS TOWER

LAS VEGAS TOWER

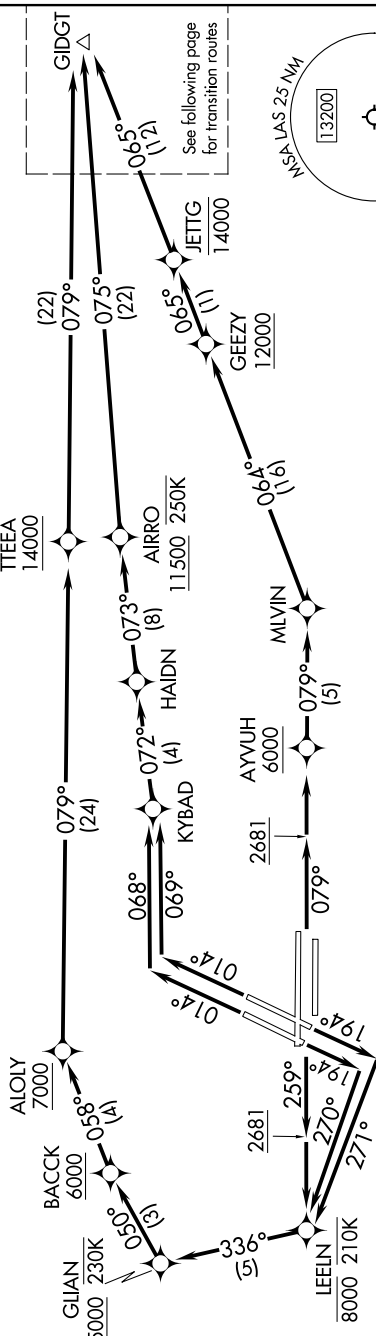
118.75 25/.8 (Rwys 1L/19R, 1R/19L)
110.0 257.0 15 91/015 95/011)

119.9 Z5/.8 (Kwys 8L/ Z6K, 8K/ Z6L)

7

TAKEOFF MINIMUMS

Rwyw 1L: Standard with minimum climb of 500'/NM to 2681', then 286'/NM to 4900'.
 Rwyw 1R: Standard with minimum climb of 500'/NM to 2681', then 295'/NM to 4900'.
 Rwyw 8L/R, 19L/R: Standard with minimum climb of 500'/NM to 2681'.
 Rwyw 26L: Standard with minimum climb of 500'/NM to 2681', then 204'/NM to 4100'.
 Rwyw 26R: Standard with minimum climb of 500'/NM to 2681', then 271'/NM to 4100'.



See following page
for transition routes

WASA

1000

NOTE: Turbojet only.

NOTE: SSKEY and IWANS Transition assigned by ATC - do not file.

NOTE: Chart not to scale.

(CONTINUED ON FOLLOWING PAGE)

GIDGT THREE DEPARTURE (RNAV) Departure Routes

(GIDGT3,GIDGT) 07AUG25

LAS VEGAS, NEVADA
HARRY REID INTL (LAS)