

WAAS CH 97609 W36B	APP CRS 006°	Rwy Ldg 11000 TDZE 850 Apt Elev 896
--	------------------------	--

RNAV (GPS) Y RWY 36C
CINCINNATI/NORTHERN KENTUCKY INTL (CVG)

RNP APCH - GPS.

T For uncompensated Baro-VNAV systems, LNAV/VNAV NA below -14°C or above 54°C. Use of FD or AP required during simultaneous operations. Simultaneous approach authorized. LNAV procedure NA during simultaneous operations. For inop ALS, increase LNAV/VNAV visibility all Cats and LNAV Cat C and D visibility to RVR 6000.

ALSE-2



MISSED APPROACH: Climb to 3000 direct LOGOZ and on track 007° to NEATS and hold.

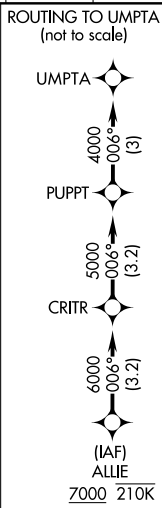
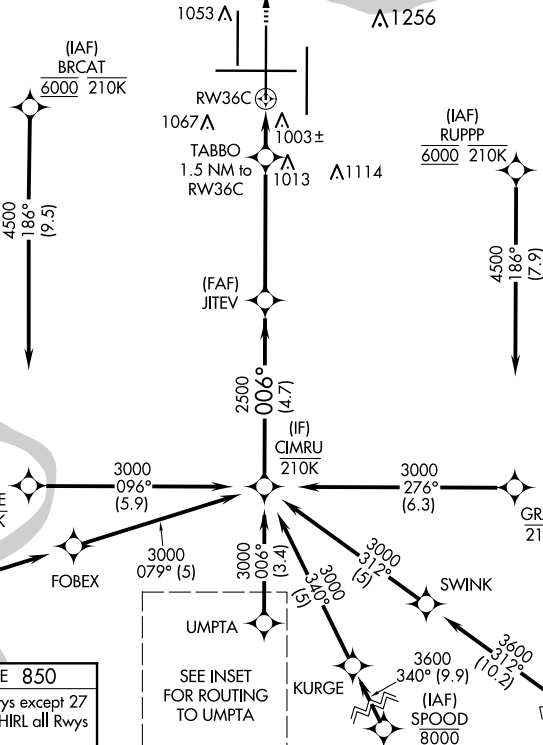
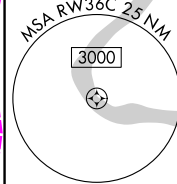
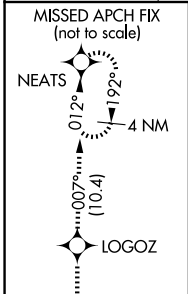
D-ATIS		CINCINNATI APP CON	
ARR	DEP	119.7	363.15 (090°-269°)
134.375	135.3	123.875	363.15 (270°-089°)

CINCINNATI TOWER
118.975 360.85 (Rwy 18L/36R)
118.3 (Rwys 18C/36C, 9/27)
133.325 (Rwy 18R/36L)

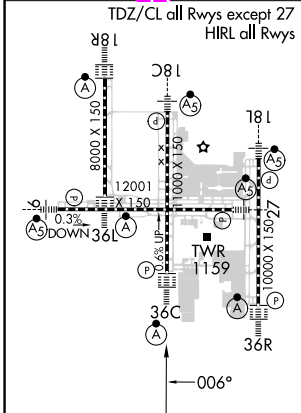
GND COM
121.7

CLNC DEL
127.175

CPDLC



ELEV	896		TDZE	850
------	-----	--	------	-----



VGSI and RNAV glidepath not coincident
(VGSI Angle 3.00/TCH 77).

COVINGTON, KENTUCKY
Amdt 2 12JUN25

CINCINNATI/NORTHERN KENTUCKY INTL (CVG)
39°03'N-84°40'W **RNAV (GPS) Y RWY 36C**

COVINGTON, KENTUCKY

AL-655 (FAA)

25219

WAAS CH 97609 W36B	APP CRS 006°	Rwy Ldg 11000 TDZE 850 Apt Elev 896
--	------------------------	--

RNAV (GPS) Y RWY 36C

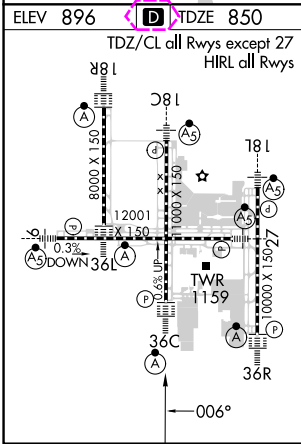
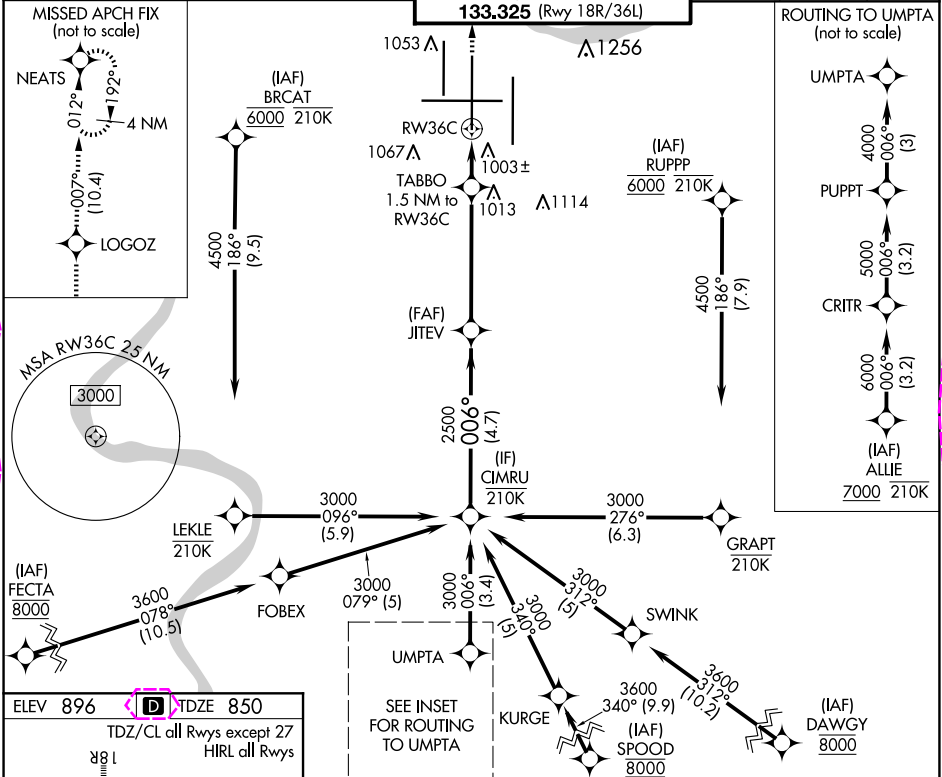
CINCINNATI/NORTHERN KENTUCKY INTL (CVG)

RNP APCH - GPS.
▼ For uncompensated Baro-VNAV systems, LNAV/VNAV NA below -14°C or above 54°C. Use of FD or AP required during simultaneous operations. Simultaneous approach authorized. LNAV procedure NA during simultaneous operations. For inop ALS, increase LNAV/VNAV visibility all Cats and LNAV Cat C and D visibility to RVR 6000.

ALS-2
A

MISSED APPROACH: Climb to 3000 direct LOGOZ and on track 007° to NEATS and hold.

D-ATIS ARR 134.375 DEP 135.3	CINCINNATI APP CON 119.7 363.15 (090°-269°) 123.875 363.15 (270°-089°)	CINCINNATI TOWER 118.975 360.85 (Rwy 18L/36R) 118.3 (Rwys 18C/36C, 9/27) 133.325 (Rwy 18R/36L)	GND CON 121.7	CLNC DEL 127.175	CPDLC
---	--	--	-------------------------	----------------------------	-------



VGSI and RNAV glidepath not coincident (VGSI Angle 3.00/TCH 77').			
GP 3.00° TCH 52			
CATEGORY A B C D			
LPV DA 1050/18 200 (200-1/2)			
LNAV/VNAV DA 1260/40 410 (400-3/4)			
LNAV MDA 1260/24 410 (400-1/2) 1260/40 410 (400-3/4)			
CIRCLING 1460-1 564 (600-1) 1560-1 3/4 664 (700-1 3/4) 1560-2 664 (700-2)			

COVINGTON, KENTUCKY

Amtd 2 12JUN25

CINCINNATI/NORTHERN KENTUCKY INTL (CVG)

39°03'N-84°40'W

RNAV (GPS) Y RWY 36C

SE-1, 07 AUG 2025 to 04 SEP 2025

SE-1, 07 AUG 2025 to 04 SEP 2025