

APP CRS 006°	Rwy Ldg 11000 TDZE 850 Apt Elev 896
------------------------	--

RNAV (RNP) Z RWY 36C
CINCINNATI/NORTHERN KENTUCKY INTL (CVG)

RNP AR APCH - GPS. Authorization required. From GODAR, HOBDA, IFAYY, or LINOL: RF.

ALSF-2

MISSED APPROACH: Climb to 3000 direct LOGOZ and on track 007° to NEATS and hold.

T For uncompensated Baro-VNAV systems, procedure NA below -14°C or above 54°C. Simultaneous approach authorized.

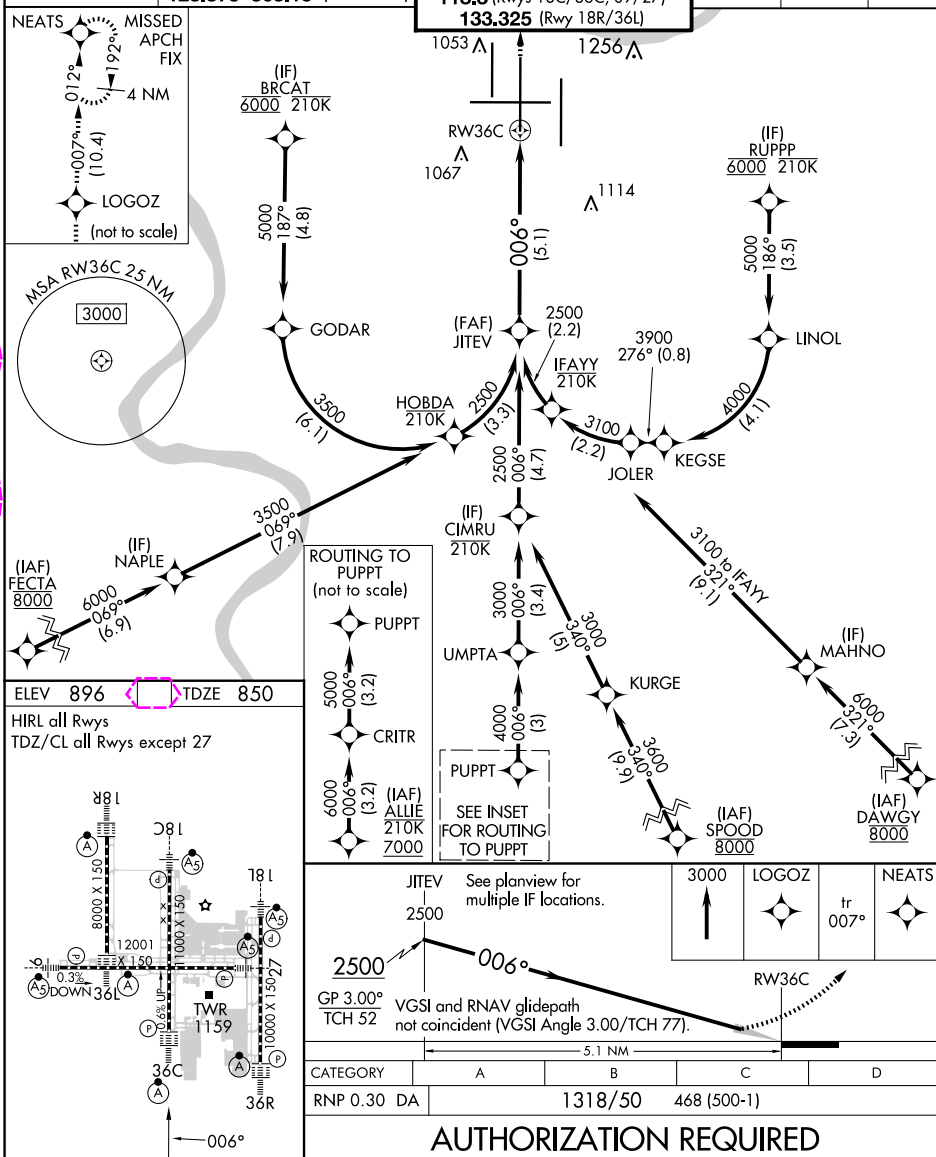
D-ATIS	CINCINNATI APP CON
ARR DEP	119.7 363.15 (090°-269°)
134.375 135.3	123.875 363.15 (270°-089°)

CINCINNATI TOWER
118.975 360.85 (Rwy 18L/36R)
118.3 (Rwys 18C/36C 09/27)

GND COM

CLNC DEL

CPDLC



COVINGTON, KENTUCKY

Amdt 1 12JUN25

CINCINNATI/NORTHERN KENTUCKY INTL(CVG)

39°03'N-84°40'W

RNAV (RNP) Z RWY 36C

SE-1, 10 JUL 2025 to 07 AUG 2025

SE-1, 10 JUL 2025 to 07 AUG 2025

COVINGTON, KENTUCKY

AL-655 (FAA)

25219

APP CRS	Rwy Ldg	11000
006°	TDZE	850
	Apt Elev	896

RNAV (RNP) Z RWY 36C

CINCINNATI/NORTHERN KENTUCKY INTL (CVG)

RNP AR APCH - GPS. Authorization required. From GODAR, HOBDA, IFAYY, or LINOL: RF.

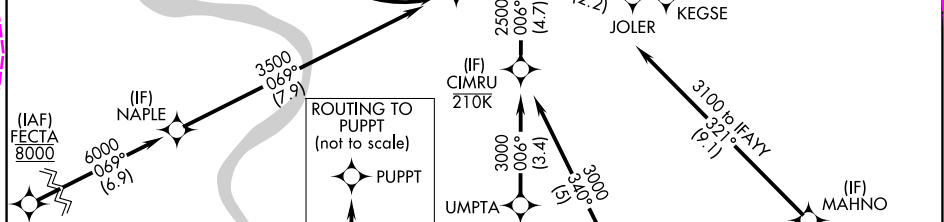
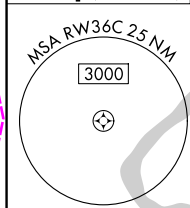
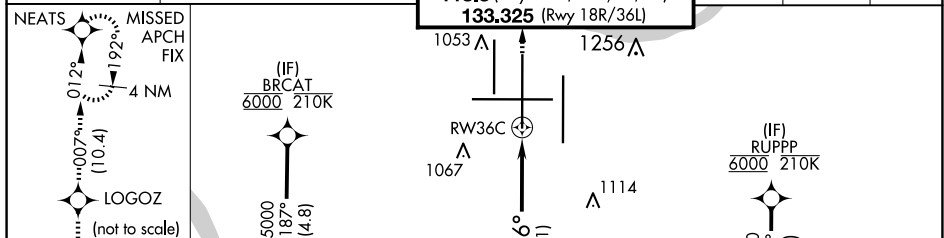
For uncompensated Baro-VNAV systems, procedure NA below -14°C or above 54°C. Simultaneous approach authorized.

ALSF-2

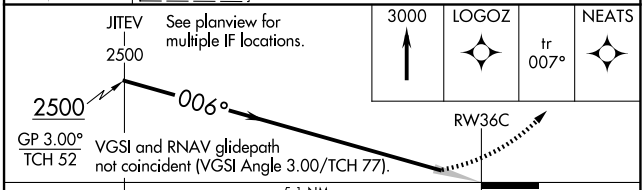
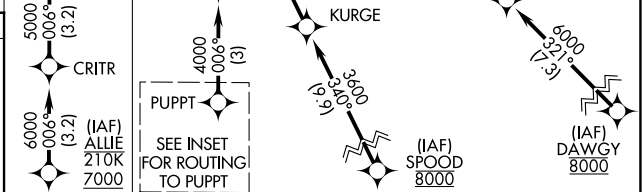
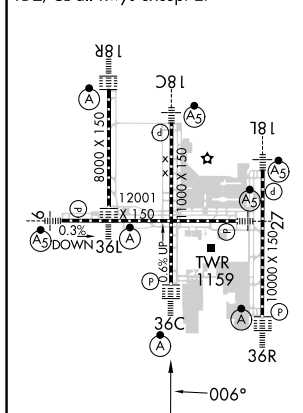


MISSED APPROACH: Climb to 3000 direct LOGOZ and on track 007° to NEATS and hold.

D-ATIS	CINCINNATI APP CON	CINCINNATI TOWER	GND CON	CLNC DEL	CPDLC
ARR 134.375	DEP 135.3	119.7 363.15 (090°-269°) 123.875 363.15 (270°-089°)	118.975 360.85 (Rwy 18L/36R) 118.3 (Rwys 18C/36C, 09/27) 133.325 (Rwy 18R/36L)	121.7	127.175



ELEV 896	TDZE 850
HIRL all Rwys	
TDZ/CL all Rwys except 27	



CATEGORY	A	B	C	D
RNP 0.30 DA	1318/50 468 (500-1)			

AUTHORIZATION REQUIRED

COVINGTON, KENTUCKY
Amdt 1 12JUN25

CINCINNATI/NORTHERN KENTUCKY INTL (CVG)
39°03'N-84°40'W
RNAV (RNP) Z RWY 36C

SE-1, 07 AUG 2025 to 04 SEP 2025

SE-1, 07 AUG 2025 to 04 SEP 2025