

COVINGTON, KENTUCKY

AL-655 (FAA)


25163

APP CRS	Rwy Ldg	11000
186°	TDZE	875
	Apt Elev	896

# RNAV (RNP) Z RWY 18C

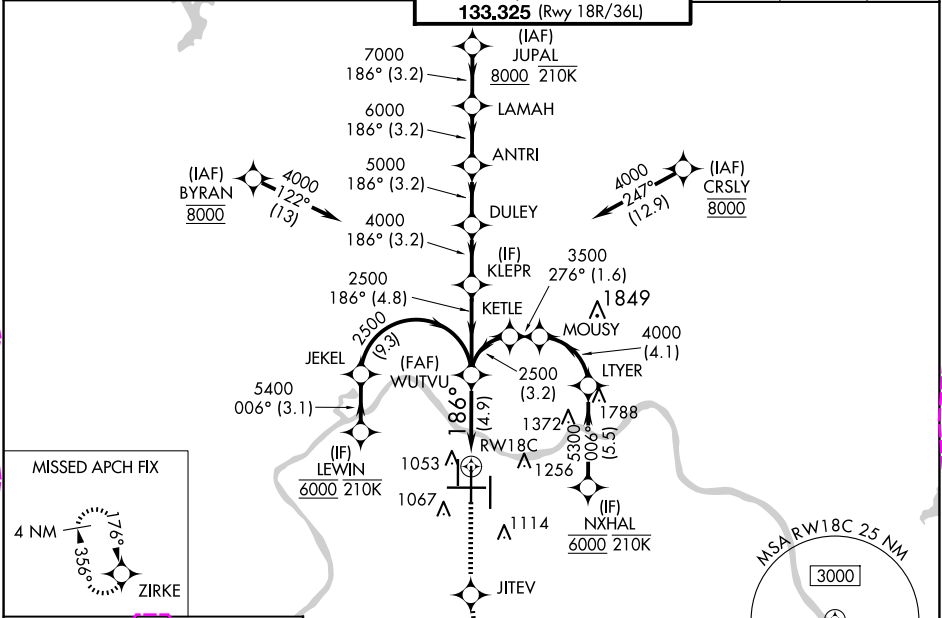
CINCINNATI/NORTHERN KENTUCKY INTL (CVG)

RNP AR APCH - GPS. Authorization required. From JEKEL or LTYER: RF.

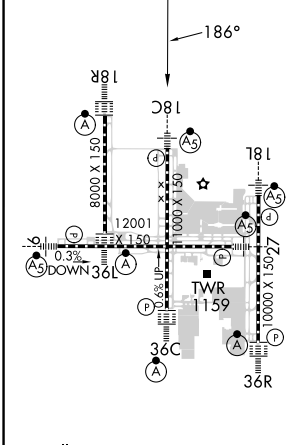
MALSR  


MISSED APPROACH: Climb to 3000 direct JITEV and on track 181° to ZIRKE and hold.



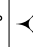
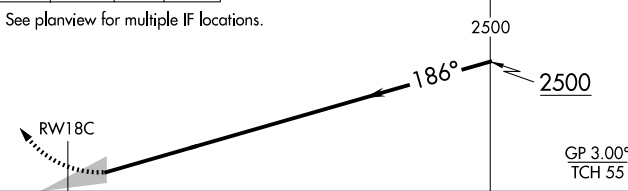
D-ATIS	CINCINNATI APP CON	CINCINNATI TOWER	GND CON	CLNC DEL	CPDLC
ARR	DEP				
134.375	135.3	118.975 363.15 (090°-269°)	121.7	127.175	
		123.875 363.15 (270°-089°)			
		118.3 (Rwys 18C/36C, 9/27)			
		133.325 (Rwy 18R/36L)			



ELEV 896	TDZE 875
----------	----------



HIRL all Rwys  
TDZ/CL all Rwys except 27

3000	JITEV	tr 181°	ZIRKE	VGSI and RNAV glidepath not coincident (VGSI Angle 3.00/TCH 71).
				
See planview for multiple IF locations.				
 <p>Diagram details: RW18C is at the bottom left. A dashed line connects RW18C to WUTVU. WUTVU is at an altitude of 2500. A solid line connects RW18C to WUTVU at an angle of 186°. The distance between RW18C and WUTVU is 4.9 NM. The glidepath angle is GP 3.00° and TCH 55.</p>				
CATEGORY	A	B	C	D
RNP 0.15 DA	1190/24 315 (300-½)			
RNP 0.30 DA	1389/55 514 (500-1)			

AUTHORIZATION REQUIRED

COVINGTON, KENTUCKY

Amdt 1 12JUN25

CINCINNATI/NORTHERN KENTUCKY INTL (CVG)

39°03'N-84°40'W

RNAV (RNP) Z RWY 18C

SE-1, 10 JUL 2025 to 07 AUG 2025

COVINGTON, KENTUCKY

AL-655 (FAA)


25219

APP CRS	Rwy Ldg	11000
186°	TDZE	875
	Apt Elev	896

# RNAV (RNP) Z RWY 18C

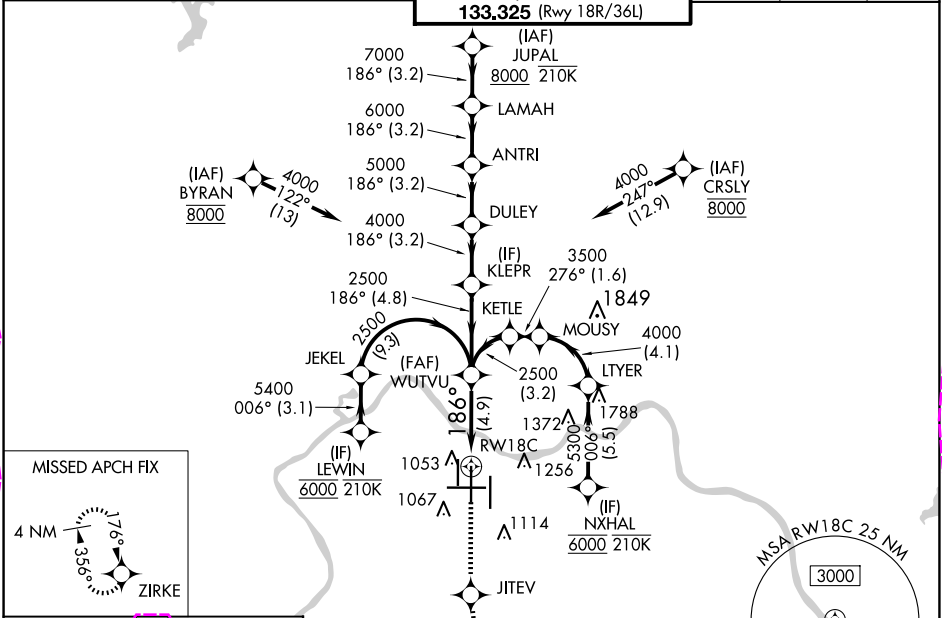
CINCINNATI/NORTHERN KENTUCKY INTL (CVG)

RNP AR APCH - GPS. Authorization required. From JEKEL or LTYER: RF.

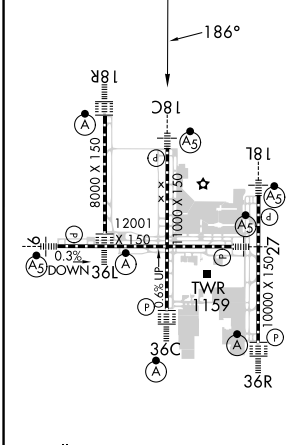
MALSR  





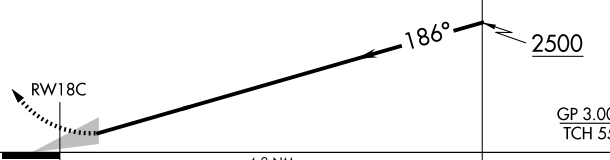
MISSED APPROACH: Climb to 3000 direct JITEV and on track 181° to ZIRKE and hold.

D-ATIS	CINCINNATI APP CON	CINCINNATI TOWER	GND CON	CLNC DEL	CPDLC
ARR	DEP				
134.375	135.3	118.975 363.15 (090°-269°)	121.7	127.175	
		118.3 (Rwys 18C/36C, 9/27)			
		133.325 (Rwy 18R/36L)			



ELEV 896	<b>D</b>	TDZE 875
----------	----------	----------



3000	JITEV	tr 181°	ZIRKE	VGSI and RNAV glidepath not coincident (VGSI Angle 3.00/TCH 71).
				
See planview for multiple IF locations.				
				
CATEGORY	A	B	C	D
RNP 0.15 DA	1190/24 315 (300-½)			
RNP 0.30 DA	1389/55 514 (500-1)			

COVINGTON, KENTUCKY  
Amdt 1 12JUN25

CINCINNATI/NORTHERN KENTUCKY INTL (CVG)  
39°03'N-84°40'W  
RNAV (RNP) Z RWY 18C

SE-1, 07 AUG 2025 to 04 SEP 2025

SE-1, 07 AUG 2025 to 04 SEP 2025