

COVINGTON, KENTUCKY

AL-655 (FAA)

25163

LOC/DME I-VAC	APP CRS	Rwy Ldg	8000
110.75	006°	TDZE	873
Chan 44 (Y)		Apt Elev	896

ILS or LOC RWY 36L

CINCINNATI/NORTHERN KENTUCKY INTL (CVG)

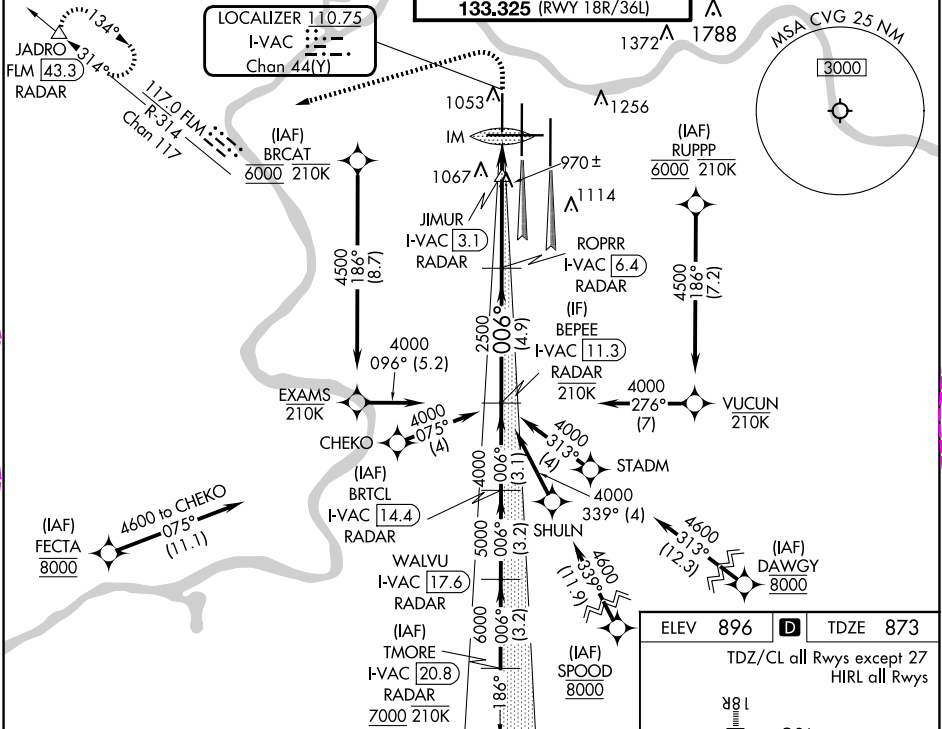
RNP APCH - GPS. From FECTA or SPOOD or DAWGY or RUPPP or BRCAT.

DME or RADAR required. RADAR required for procedure entry at TMORE.

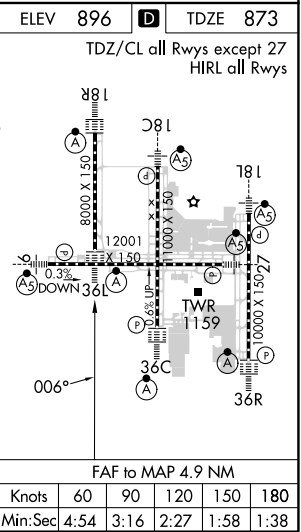
Simultaneous approach authorized. For inop ALS, increase S-LOC 36L Cat C and D visibility to RVR 5500.

ALSF-2
MISSED APPROACH: Climb to 1300 then climbing left turn to 4000 on heading 260° and on FLM VOR/DME R-314 to JADRO/FLM 43.3 DME/RADAR and hold.

D-ATIS	CINCINNATI APP CON	CINCINNATI TOWER	GND CON	CLNC DEL	CPDLC
ARR 134.375 DEP 135.3	119.7 363.15 (090°-269°) 123.875 363.15 (270°-089°)	118.975 360.85 (RWY 18L/36R) 118.3 (RWYS 18C/36C, 09/27) 133.325 (RWY 18R/36L)	121.7	127.175	



	BEPEE I-VAC 11.3 RADAR	ROPPR I-VAC 6.4 RADAR	JIMUR I-VAC 3.1 RADAR	I-VAC 2.4	IM I-VAC 1.5	FLM R-314	JADRO
	4000	2500	1440			1300	4000
	006°	2500	1440			hdg 260°	
GS 3.00° TCH 55							
	4.9 NM	3.3 NM	0.7 NM	0.7 NM	0.2		
CATEGORY	A	B	C	D			
S-ILS 36L	1073/18				200 (200-½)		
S-LOC 36L	1220/24	347 (400-½)	1220/30	347 (400-¾)			
CIRCLING	1460-1	564 (600-1)	1560-1¾	1560-2			
			664 (700-¾)	664 (700-2)			



COVINGTON, KENTUCKY

Amdt 2 12JUN25

CINCINNATI/NORTHERN KENTUCKY INTL (CVG)

39°03'N-84°40'W

ILS or LOC RWY 36L

SE-1, 10 JUL 2025 to 07 AUG 2025

SE-1, 10 JUL 2025 to 07 AUG 2025

COVINGTON, KENTUCKY

AL-655 (FAA)

25219

LOC/DME I-VAC	APP CRS	Rwy Ldg	8000
110.75	006°	TDZE	873
Chan 44 (Y)		Apt Elev	896

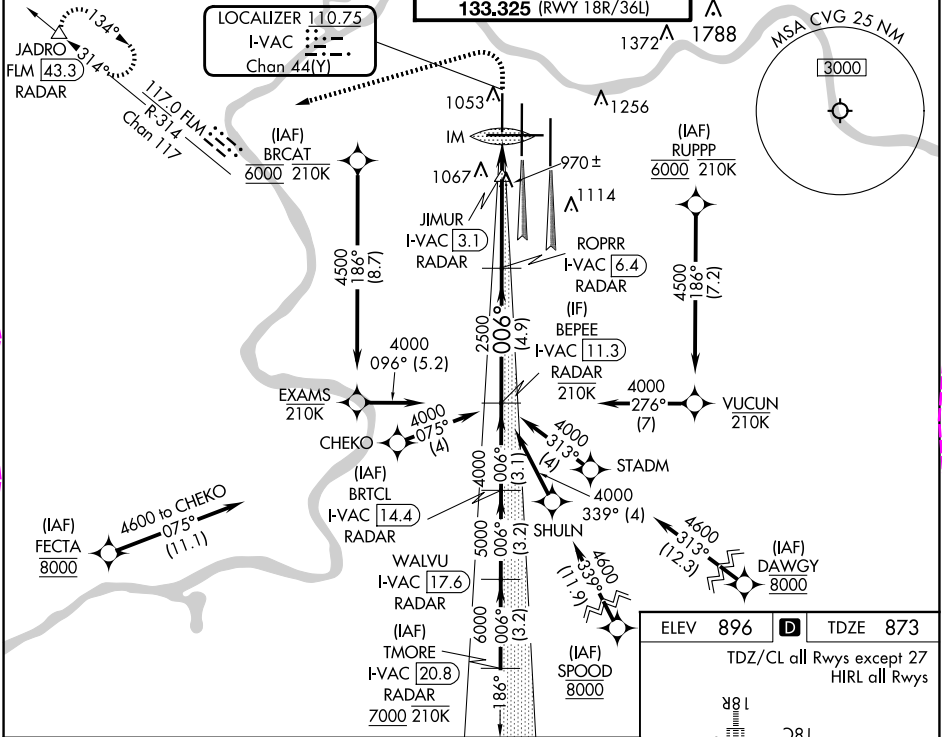
ILS or LOC RWY 36L

CINCINNATI/NORTHERN KENTUCKY INTL (CVG)

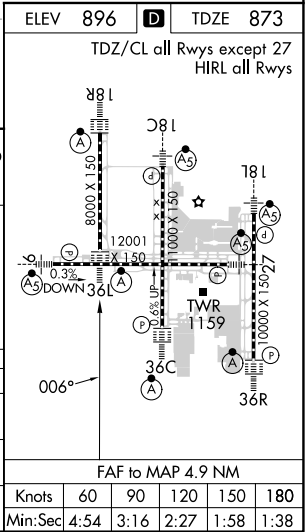
RNP APCH - GPS. From FECTA or SPOOD or DAWGY or RUPPP or BRCAT.
DME or RADAR required. RADAR required for procedure entry at TMORE.
Simultaneous approach authorized. For inop ALS, increase S-LOC 36L Cat C and D visibility to RVR 5500.

ALSF-2
MISSED APPROACH: Climb to 1300 then climbing left turn to 4000 on heading 260° and on FLM VOR/DME R-314 to JADRO/FLM 43.3 DME/RADAR and hold.

D-ATIS	CINCINNATI APP CON	CINCINNATI TOWER	GND CON	CLNC DEL	CPDLC
ARR 134.375 DEP 135.3	119.7 363.15 (090°-269°) 123.875 363.15 (270°-089°)	118.975 360.85 (RWY 18L/36R) 118.3 (RWYS 18C/36C, 09/27) 133.325 (RWY 18R/36L)	121.7	127.175	



GS 3.00° TCH 55	BEPEE I-VAC [11.3] RADAR	ROPRR I-VAC [6.4] RADAR	JIMUR I-VAC [3.1] RADAR	IM I-VAC [1.5]	FLM R-314	JADRO △
	4000	2500	1440	2500	1300	4000
	006°	2500	1440	1300	4000	hdg 260°
	4.9 NM	3.3 NM	0.7 NM	0.7 NM	0.2	
CATEGORY	A	B	C	D		
S-ILS 36L	1073/18		200 (200-½)			
S-LOC 36L	1220/24		347 (400-½)		1220/30 347 (400-¾)	
CIRCLING	1460-1 564 (600-1)		1560-1¾ 664 (700-1¾)		1560-2 664 (700-2)	



COVINGTON, KENTUCKY

Amdt 2A 07AUG25

CINCINNATI/NORTHERN KENTUCKY INTL (CVG)

39°03'N-84°40'W

ILS or LOC RWY 36L

SE-1, 07 AUG 2025 to 04 SEP 2025

SE-1, 07 AUG 2025 to 04 SEP 2025