

COVINGTON, KENTUCKY



AL-655 (FAA)

25163

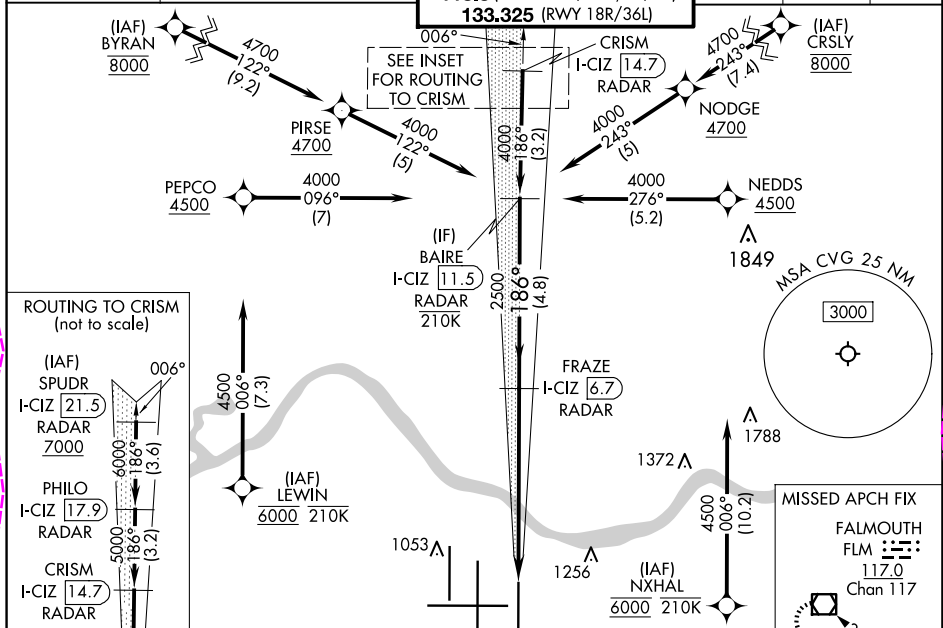
LOC/DME I-CIZ	APP CRS	Rwy Ldg	10000
110.15	186°	TDZE	889
Chan 38 (Y)		Apt Elev	896

ILS or LOC RWY 18L

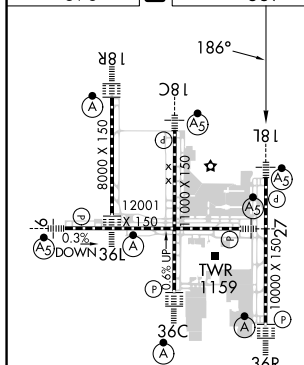
CINCINNATI/NORTHERN KENTUCKY INTL (CVG)

RNP APCH - GPS. From BYRAN, CRSLY, LEWIN, or NXHAL.		MALSR 	MISSED APPROACH: Climb to 1500 then climbing left turn to 3000 on heading 120° and FLM VOR/DME R-339 to FLM VOR/DME and hold.
DME or RADAR required. RADAR required for procedure entry at SPUDR.			
 NA	Simultaneous approach authorized. For inop ALS, increase S-LOC 18L Cat C and D visibility to 1½ SM.		

D-ATIS	CINCINNATI APP CON	CINCINNATI TOWER	GND CON	CLNC DEL	CPDLC
ARR 134.375	DEP 135.3	119.7 363.15 (090°-269°)	121.7	127.175	
		123.875 363.15 (270°-089°)			
		118.3 (RWYS 18C/36C, 09/27)			
		133.325 (RWY 18R/36L)			



ELEV 896	TDZE 889
----------	----------






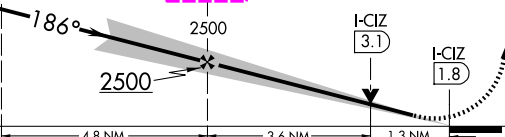

HIRL all Rwys
TDZ/CL all Rwys except 27

FAF to MAP 4.9 NM					
Knots	60	90	120	150	180
Min:Sec	4:54	3:16	2:27	1:58	1:38

COVINGTON, KENTUCKY
Amdt B 12JUN25

CINCINNATI/NORTHERN KENTUCKY INTL (CVG)
39°03'N-84°40'W

ILS or LOC RWY 18L

VGSI and ILS glidepath not coincident (VGSI Angle 3.00/TCH 71).				1500	3000	FLM R-339	FLM 
<div>BAIRE 1-CIZ 11.5 RADAR</div> <div>FRAZE 1-CIZ 6.7 RADAR</div>					 hdg 120°		
4000				2500	I-CIZ 3.1	I-CIZ 1.8	
GS 3.00° TCH 55	4.8 NM			3.6 NM	1.3 NM		
CATEGORY	A	B	C	D			
S-ILS 18L	1089/18 200 (200-½)						
S-LOC 18L	1360/24	471 (500-½)	1360/50	471 (500-1)			
 CIRCLING	1460-1	564 (600-1)	1560-1¾ 664 (700-1¾)	1560-2 664 (700-2)			

COVINGTON, KENTUCKY

AL-655 (FAA)

25219

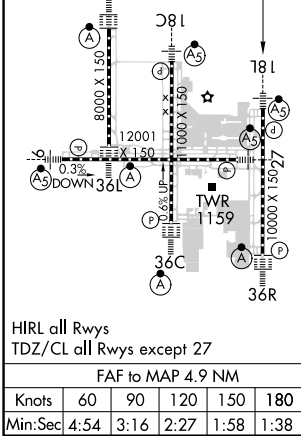
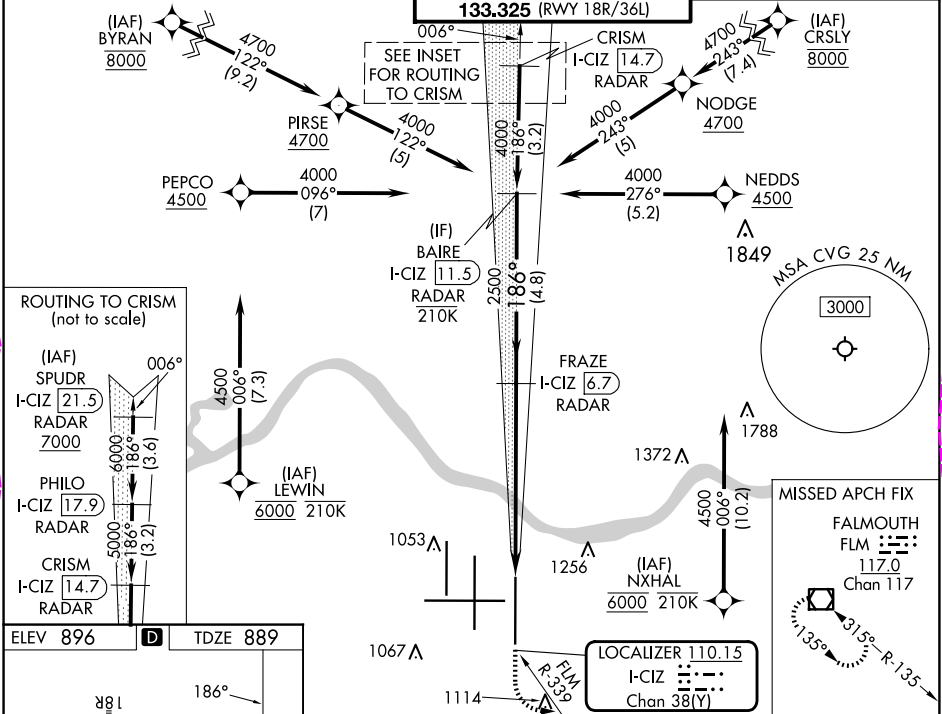
LOC/DME I-CIZ	APP CRS	Rwy Ldg	10000
110.15	186°	TDZE	889
Chan 38 (Y)		Apt Elev	896


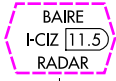
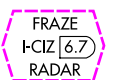
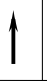

ILS or LOC RWY 18L

CINCINNATI/NORTHERN KENTUCKY INTL (CVG)

RNP APCH - GPS. From BYRAN, CRSLY, LEWIN, or NXHAL.
DME or RADAR required. RADAR required for procedure entry at SPUDR.
Simultaneous approach authorized. For inop ALS, increase S-LOC 18L Cat C and D visibility to 1½ SM.

D-ATIS	CINCINNATI APP CON	CINCINNATI TOWER	GND CON	CLNC DEL	CPDLC
ARR 134.375	DEP 135.3	119.7 363.15 (090°-269°) 123.875 363.15 (270°-089°)	121.7	127.175	



VGSI and ILS glidepath not coincident (VGSI Angle 3.00/TCH 71).				1500	3000	FLM R-339	FLM 
							

COVINGTON, KENTUCKY
Amdt B 12JUN25

CINCINNATI/NORTHERN KENTUCKY INTL (CVG)
39°03'N-84°40'W
ILS or LOC RWY 18L

SE-1, 07 AUG 2025 to 04 SEP 2025

SE-1, 07 AUG 2025 to 04 SEP 2025