

COVINGTON, KENTUCKY

AL-655 (FAA)

LOC/DME I-VAC <b>110.75</b> Chan <b>44</b> (Y)	APP CRS <b>006°</b>	Rwy Ldg TDZE <b>873</b> Apt Elev <b>896</b>
--	------------------------	---

RNP APCH - GPS. From FECTA or SPOOD or DAWGY or RUPPP or BRCAT.

DME or RADAR required. RADAR required for procedure entry at TMORE.

# ILS RWY 36L (CAT II)

## CINCINNATI/NORTHERN KENTUCKY INTL (CVG)

25163

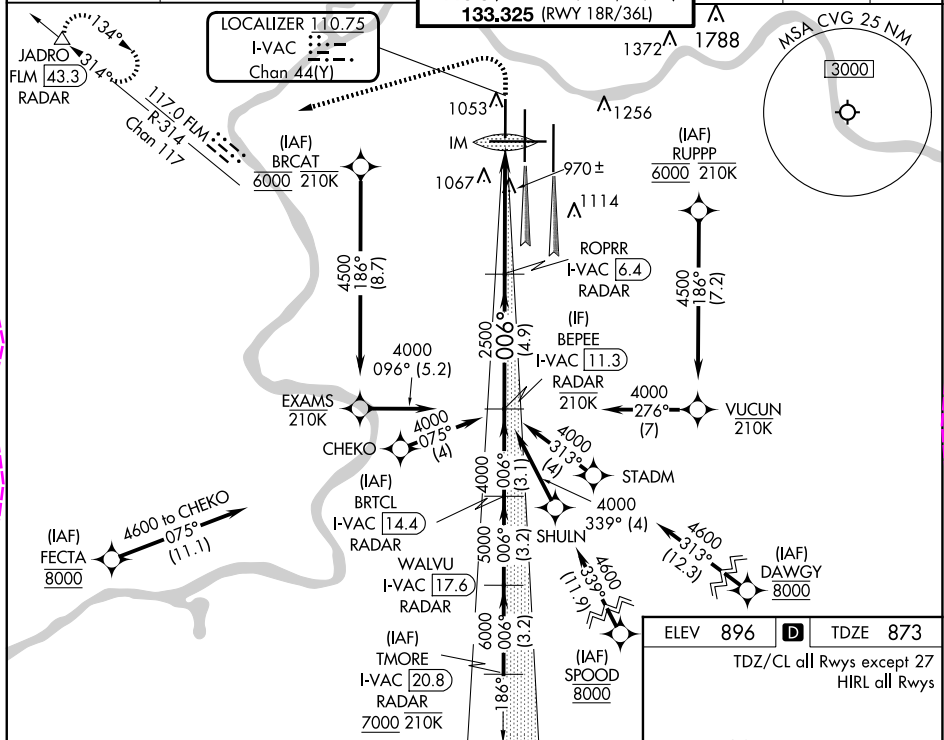
Simultaneous approach authorized.

ALSf-2

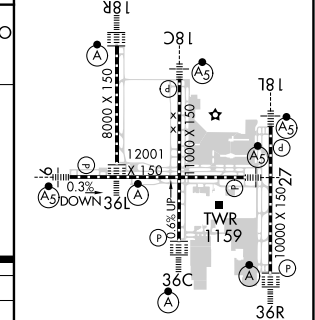
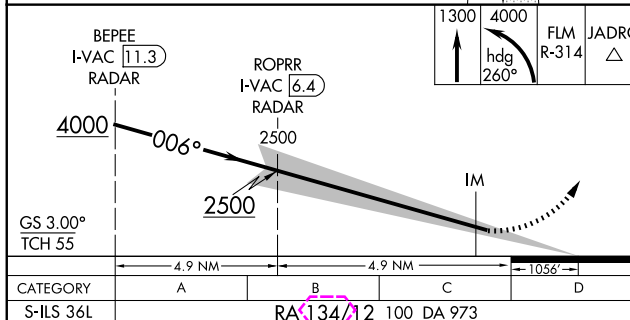


MISSED APPROACH: Climb to 1300 then climbing left turn to 4000 on heading 260° and on FLM VOR/DME R-314 to JADRO/FLM 43.3 DME/RADAR and hold.

D-ATIS ARR <b>134.375</b> DEP <b>135.3</b>	CINCINNATI APP CON <b>119.7 363.15</b> (090°-269°) <b>123.875 363.15</b> (270°-089°)	CINCINNATI TOWER <b>118.975 360.85</b> (RWY 18L/36R) <b>118.3</b> (RWYS 18C/36C, 09/27) <b>133.325</b> (RWY 18R/36L)	GND CON <b>121.7</b>	CLNC DEL <b>127.175</b>	CPDLC
---	--	---	-------------------------	----------------------------	-------



ELEV <b>896</b>	<b>D</b>	TDZE <b>873</b>
TDZ/CL all Rwy's except 27 HIRL all Rwy's		



**CATEGORY II ILS - SPECIAL AIRCREW  
& AIRCRAFT CERTIFICATION REQUIRED**

COVINGTON, KENTUCKY

Amdt 2 12JUN25

CINCINNATI/NORTHERN KENTUCKY INTL (CVG)

39°03'N-84°40'W

# ILS RWY 36L (CAT II)

SE-1, 10 JUL 2025 to 07 AUG 2025

SE-1, 10 JUL 2025 to 07 AUG 2025

LOC/DME I-VAC <b><u>110.75</u></b> Chan <b>44</b> (Y)	APP CRS <b>006°</b>	Rwy Ldg <b>8000</b> TDZE <b>873</b> Apt Elev <b>896</b>
---	------------------------	---

ILS RWY 36L (CAT II)  
CINCINNATI/NORTHERN KENTUCKY INTL (CVG)

RNP APCH - GPS. From FECTA or SPOOD or DAWGY or RUPPP or BRCAT.

DME or RADAR required. RADAR required for procedure entry at TMORE.

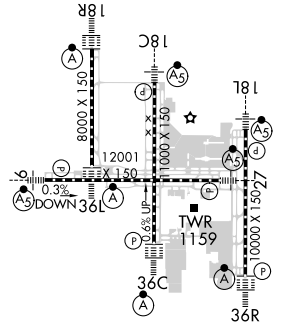
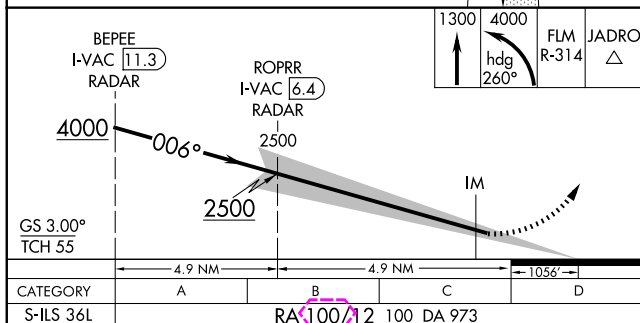
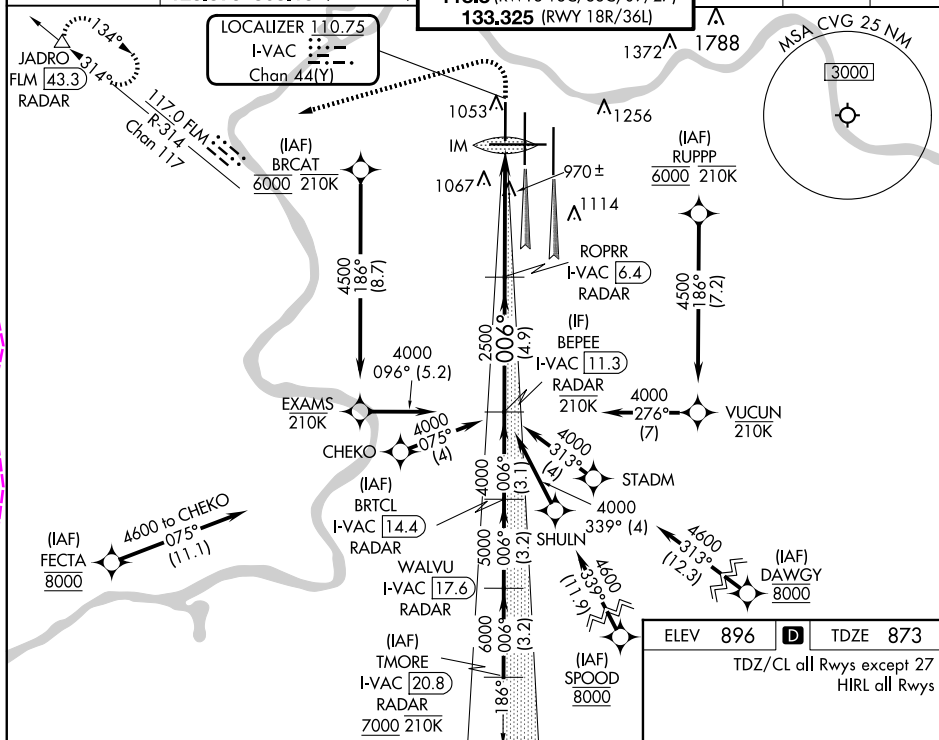
**T** Simultaneous approach authorized.

ALSF-2



**MISSED APPROACH:** Climb to 1300 then climbing left turn to 4000 on heading 260° and on FLM VOR/DME R-314 to JADRO/FLM 43.3 DME/RADAR and hold.

D-ATIS		CINCINNATI APP CON		CINCINNATI TOWER		GND CON	CLNC DEL	CPDLC
ARR	DEP							
134.375	135.3	119.7	363.15 (090°-269°)	118.975	360.85 (RWY 18L/36R)	121.7	127.175	
		123.875	363.15 (270°-089°)	119.3	(RWY5 18C/36C 09/27)			



SE-1, 07 AUG 2025 to 04 SEP 2025

SE-1, 07 AUG 2025 to 04 SEP 2025

CATEGORY II ILS - SPECIAL AIRCREW  
& AIRCRAFT CERTIFICATION REQUIRED

COVINGTON, KENTUCKY  
Amdt 2A 07AUG25

CINCINNATI/NORTHERN KENTUCKY INTL (CVG)  
39°03'N-84°40'W ILS RWY 34L (CAT II)

ILS RWY 36L (CAT II)