

COVINGTON, KENTUCKY

AL-655 (FAA)

25163

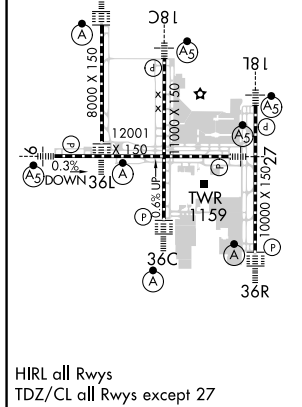
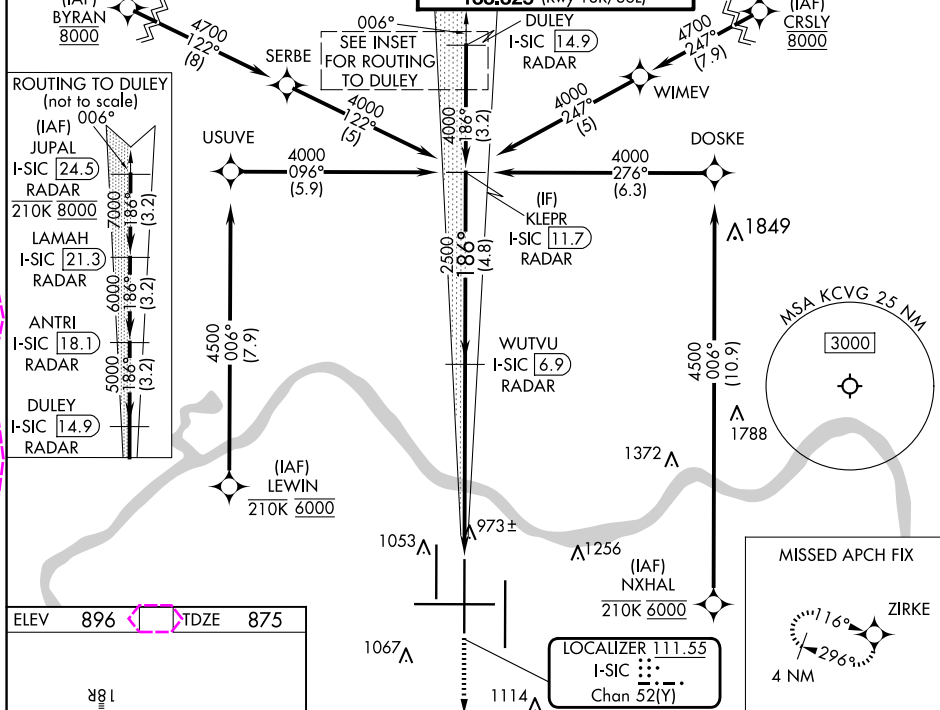
LOC/DME I-SIC	APP CRS	Rwy Ldg	11000
111.55	186°	TDZE	875
Chan 52(Y)		Apt Elev	896

ILS RWY 18C (SA CAT I & II)

CINCINNATI/NORTHERN KENTUCKY INTL (CVG)

RNP APCH - GPS.	MALSR	MISSED APPROACH: Climb to 1300, then climb to 3000 direct ZIRKE and hold.
RADAR required.		
Simultaneous approach authorized. Requires specific OPSPEC, MSPEC, or LOA approval.		

D-ATIS	CINCINNATI APP CON	CINCINNATI TOWER	GND CON	CLNC DEL	CPDLC
ARR 134.375 DEP 135.3	119.7 363.15 (090°-269°) 123.875 363.15 (270°-089°)	118.975 360.85 (Rwy 18L/36R) 118.3 (Rwys 18C/36C, 9/27) 133.325 (Rwy 18R/36L)	121.7	127.175	



1300	3000	ZIRKE	VGSI and ILS glidepath not coincident (VGSI Angle 3.00/TCH 71).	KLEPR I-SIC [11.7] RADAR
			WUTVU I-SIC [6.9] RADAR	
			2500	4000
			2500	
			1056°	GS 3.00° TCH 55
			4.9 NM	4.8 NM
CATEGORY	A	B	C	D
S-ILS 18C	SA CAT I	RA 191/16	150 DA 1025	
S-ILS 18C	SA CAT II	RA 100/12	100 DA 975	
SA CATEGORY I & II ILS-SPECIAL AIRCREW & AIRCRAFT CERTIFICATION REQUIRED				

COVINGTON, KENTUCKY

Amdt 24 12JUN25

CINCINNATI/NORTHERN KENTUCKY INTL (CVG)

39°03'N-84°40'W

ILS RWY 18C (SA CAT I & II)

SE-1, 07 AUG 2025 to 04 SEP 2025