

VOR/DME GDM 116.95 Chan 116 (Y)	APP CRS 347°	Rwy Idg TDZE Apt Elev	5000 998 1009
---	------------------------	-----------------------------	--

VOR/DME RWY 33
WORCESTER RGNL (ORH)

T When local altimeter setting not received, use Bedford altimeter setting and increase all MDAs 200 feet; increase S-33 Cat C/D visibility $\frac{1}{2}$ SM and Circling Cat B $\frac{1}{4}$ SM.

MISSED APPROACH: Climbing left turn to 3000 on heading 240° and GDM VOR/DME R-191 to GRAYM INT/GDM 26.7 DME and hold.

ATIS 126.55	BRADLEY APP CON 119.0 327.1	WORCESTER TOWER ★ 120.5 (CTAF) 0 263.0	GND CON 123.85	CLNC DEL 128.65	CLNC DEL 119.0 (When twr closed)	UNICOM 122.95
-----------------------	--	---	---------------------------------	----------------------------------	--	--------------------------------

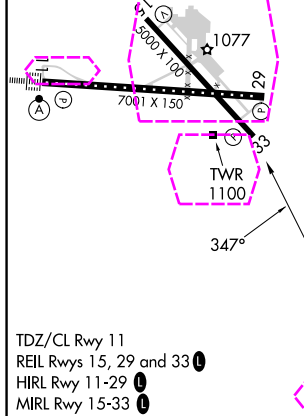
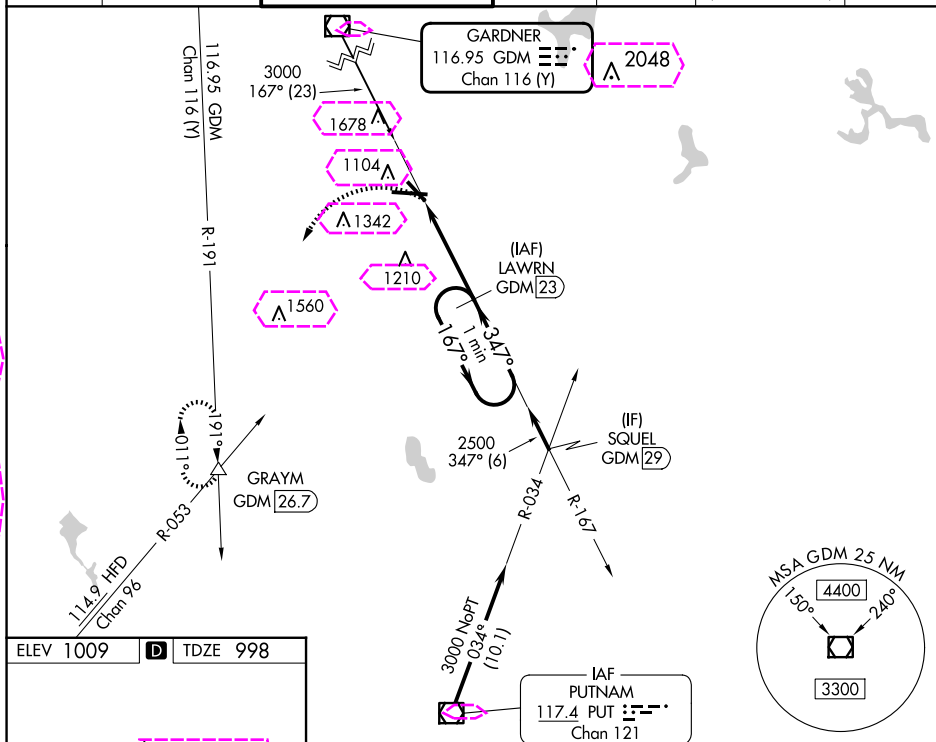


Diagram illustrating a One Minute Holding Pattern. The pattern is defined by a series of turns around a fix (LAWRN GDM 23). The turns are labeled with angles: 340°, 347°, 167°, and 347°. The distance between the first and second turns is 4 NM. The distance between the second and third turns is 3.45 NM. The distance between the third and fourth turns is 3.45 NM. The distance between the fourth and first turns is 3.45 NM. The pattern is labeled 'One Minute Holding Pattern'.

WORCESTER, MASSACHUSETTS

AL-652 (FAA)

25219

VOR/DME GDM 116.95 Chan 116 (Y)	APP CRS 347°	Rwy Ldg TDZE Apt Elev 1009
---	------------------------	---

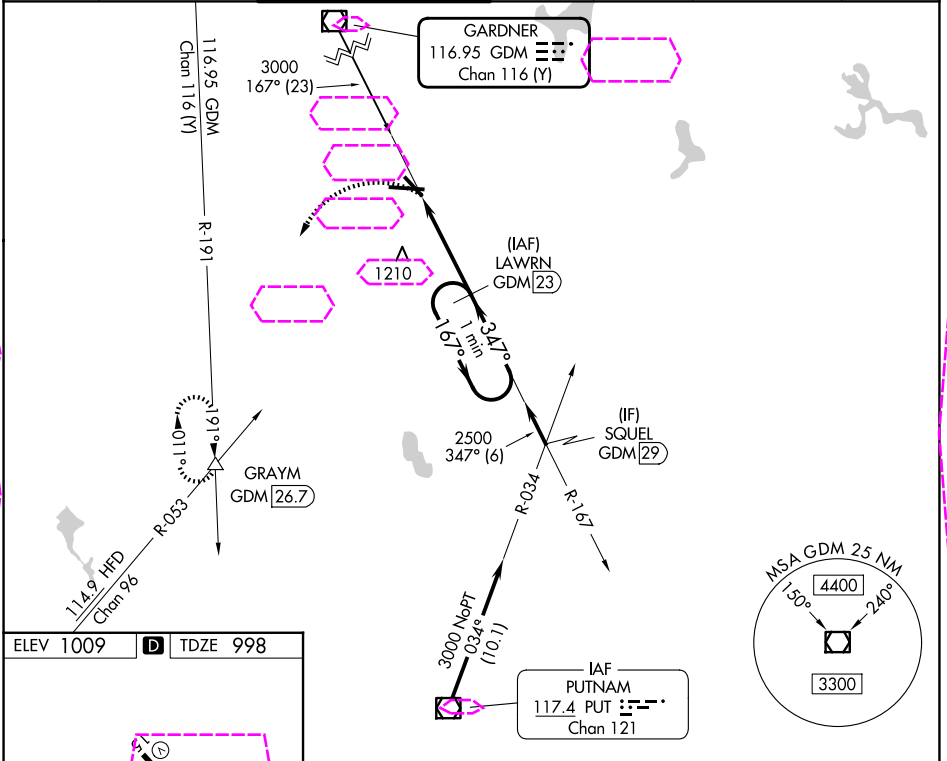
VOR/DME RWY 33

WORCESTER RGNL (ORH)

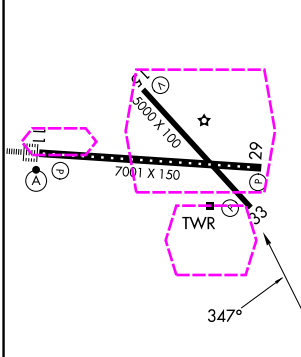
When local altimeter setting not received, use Bedford altimeter setting and increase all MDA's 200 feet; increase S-33 Cat C/D visibility ½ SM and Circling Cat B ¼ SM.

MISSED APPROACH: Climbing left turn to 3000 on heading 240° and GDM VOR/DME R-191 to GRAYM INT/GDM 26.7 DME and hold.

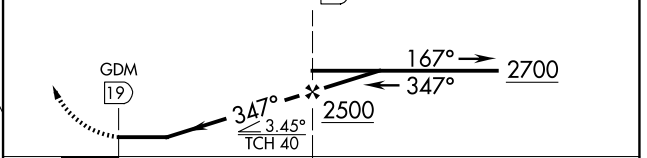
ATIS 126.55	YANKEE APP CON 119.0 327.1	WORCESTER TOWER ★ 120.5 (CTAF) 263.0	GND CON 123.85	CLNC DEL 128.65	CLNC DEL 119.0 (When twr closed)	UNICOM 122.95
-----------------------	--------------------------------------	---	--------------------------	---------------------------	---	-------------------------



ELEV 1009	D	TDZE 998
-----------	---	----------



3000	GDM R-191	GRAYM	VGSI and descent angles not coincident (VGSI Angle 3.00/TCH 40).	One Minute Holding Pattern
------	-----------	-------	--	----------------------------



CATEGORY	A	B	C	D
S-33	1520-1	522 (600-1)	1520-1½	522 (600-1½)
CIRCLING	1560-1 551 (600-1)	1720-1 711 (800-1)	2000-3	991 (1000-3)

WORCESTER, MASSACHUSETTS
Amdt 1C 26MAR20

42°16'N-71°53'W

WORCESTER RGNL (ORH)

VOR/DME RWY 33

NE-1, 07 AUG 2025 to 04 SEP 2025

NE-1, 07 AUG 2025 to 04 SEP 2025