

NE-1, 10 JUL 2025 to 07 AUG 2025

WORCESTER, MASSACHUSETTS

AL-652 (FAA)

25219

WAAS Ch 82299 W29A	APP CRS 289°	Rwy Ldg 7001 TDZE 990 Apt Elev 1009
--	------------------------	--

RNAV (GPS) RWY 29

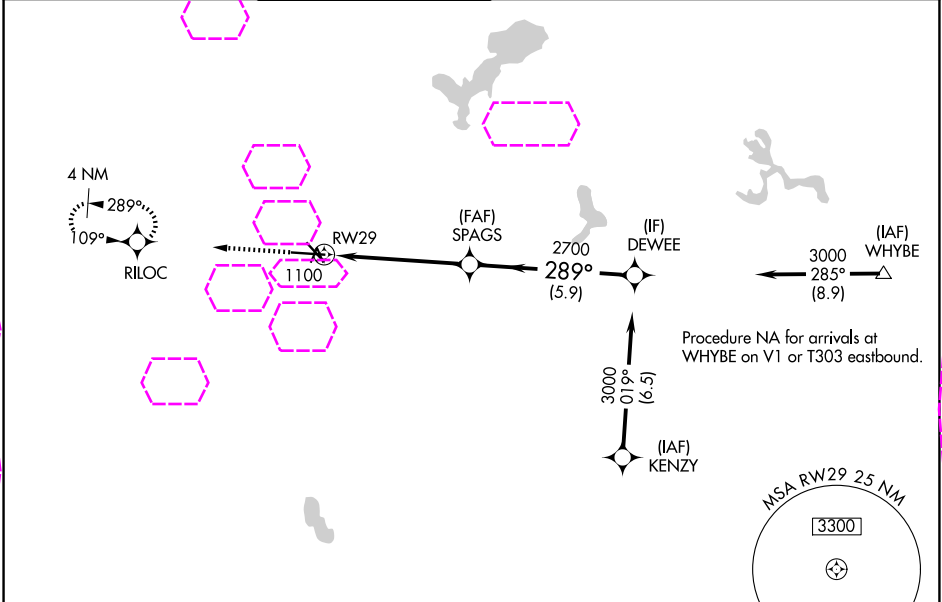
WORCESTER RGNL (ORH)

RNP APCH - GPS.

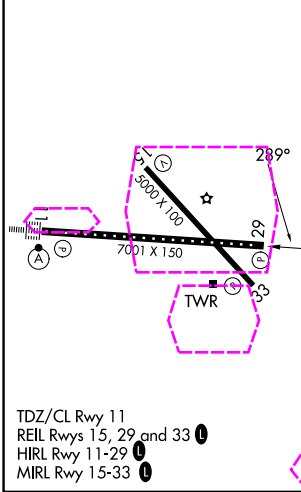
⚠ For uncompensated Baro-VNAV systems, LNAV/VNAV NA below -19°C or above 54°C.

MISSED APPROACH: Climb to 3000 direct RILOC and hold, continue climb-in-hold to 3000.

ATIS 126.55	YANKEE APP CON 119.0 327.1	WORCESTER TOWER ★ 120.5 (CTAF) 263.0	GND CON 123.85	CLNC DEL 128.65	CLNC DEL 119.0 (When twr closed)	UNICOM 122.95
-----------------------	---	---	--------------------------	---------------------------	---	-------------------------



ELEV 1009	D	TDZE 990
-----------	----------	----------



<div>3000</div> <div>↑</div>		<div>RILOC</div> <div></div>		<div>DEWEE</div> <div>3000</div>	
<div>RW29</div> <div></div>		<div>1 NM to RW29</div> <div></div>		<div>SPAGS</div> <div>2700</div> <div></div>	
<div>1 NM</div>		<div>4.2 NM</div>		<div>5.9 NM</div>	
<div>289°</div>		<div>2700</div>		<div>GP 3.00°</div> <div>TCH 54</div>	
CATEGORY	A	B	C	D	
LPV DA	1190/50 200 (200-1)				
LNAV/VNAV DA	1261/50 271 (300-1)				
LNAV MDA	1360/55 370 (400-1)				
CIRCLING	1560-1 551 (600-1)	1720-1 711 (800-1)	2000-3 991 (1000-3)		

WORCESTER, MASSACHUSETTS
Amdt 3 17APR25

42°16'N-71°53'W

WORCESTER RGNL (ORH)

RNAV (GPS) RWY 29

NE-1, 07 AUG 2025 to 04 SEP 2025

NE-1, 07 AUG 2025 to 04 SEP 2025