

WORCESTER, MASSACHUSETTS

AL-652 (FAA)

23278

WAAS CH 77999 W11A	APP CRS 109°	Rwy Idg TDZE Apt Elev	7001 980 1009
--------------------------	-----------------	-----------------------------	---------------------

RNAV (GPS) RWY 11

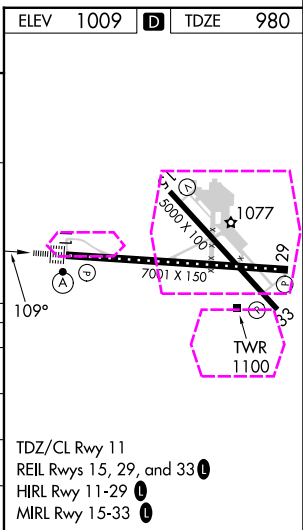
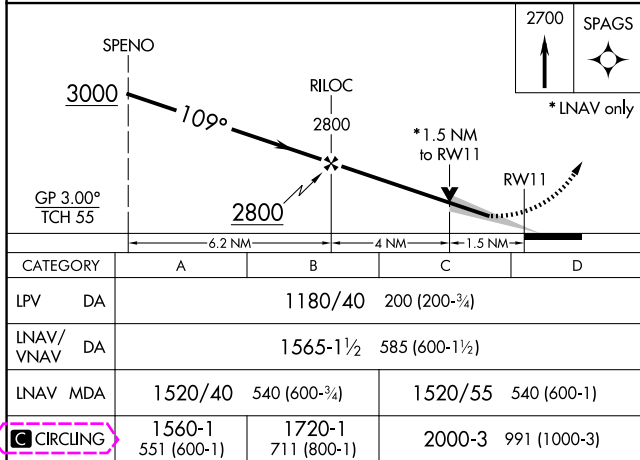
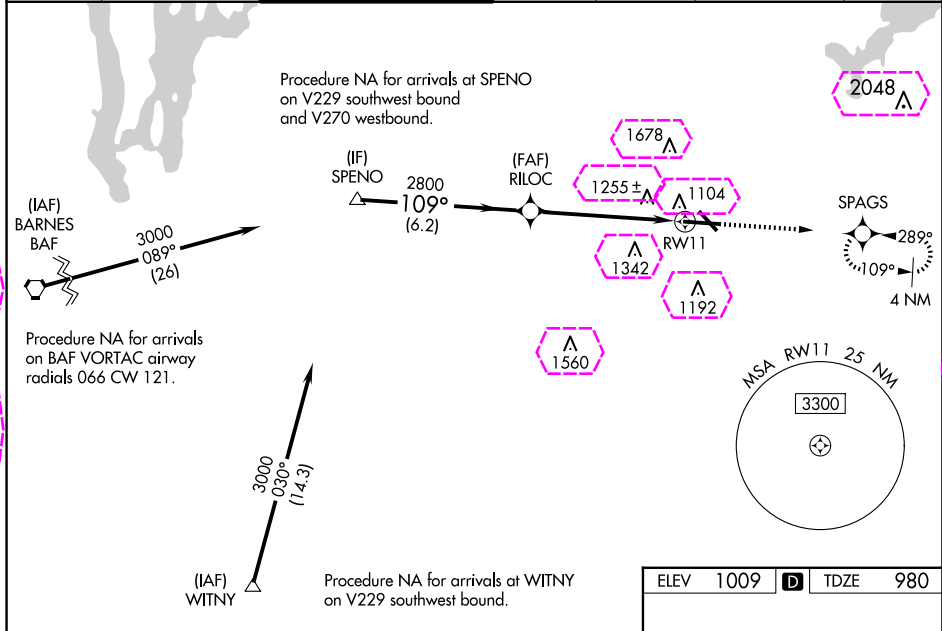
WORCESTER RGNL (ORH)

⚠ For uncompensated Baro-VNAV systems, LNAV/VNAV NA below -20°C (-4°F) or above 54°C (130°F).
DME/DME RNP-0.3 NA.
Inop table does not apply to LPV all Cats.
Inop table does not apply to LNAV Cats A/B.

ALS-F-2

MISSED APPROACH: Climb to 2700 direct SPAGS and hold.

ATIS 126.55	BRADLEY APP CON 119.0 327.1	WORCESTER TOWER ★ 120.5 (CTAF) 263.0	GND CON 123.85	CLNC DEL 128.65	CLNC DEL 119.0 (When twr closed)	UNICOM 122.95
----------------	--------------------------------	---	-------------------	--------------------	--	------------------



WORCESTER, MASSACHUSETTS

AL-652 (FAA)

25219

WAAS CH 77999 W11A	APP CRS 109°	Rwy Ldg TDZE Apt Elev	7001 980 1009
--------------------------	-----------------	-----------------------------	---------------------

RNAV (GPS) RWY 11

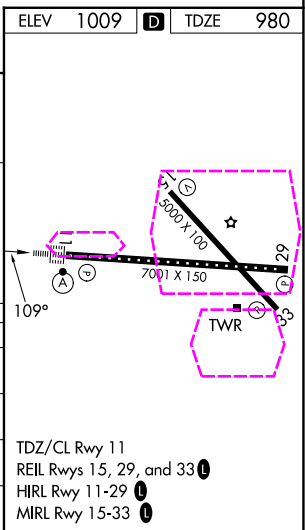
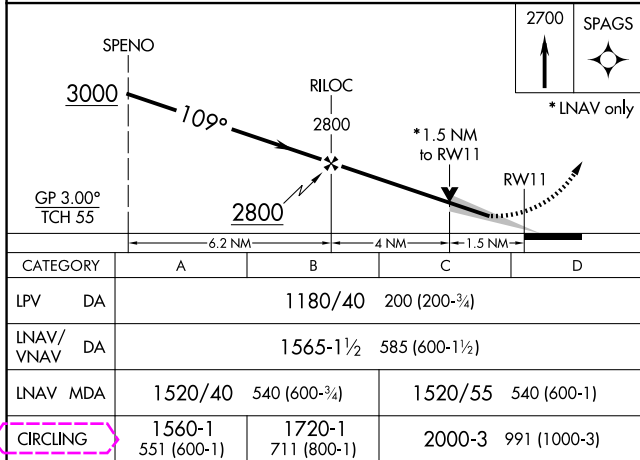
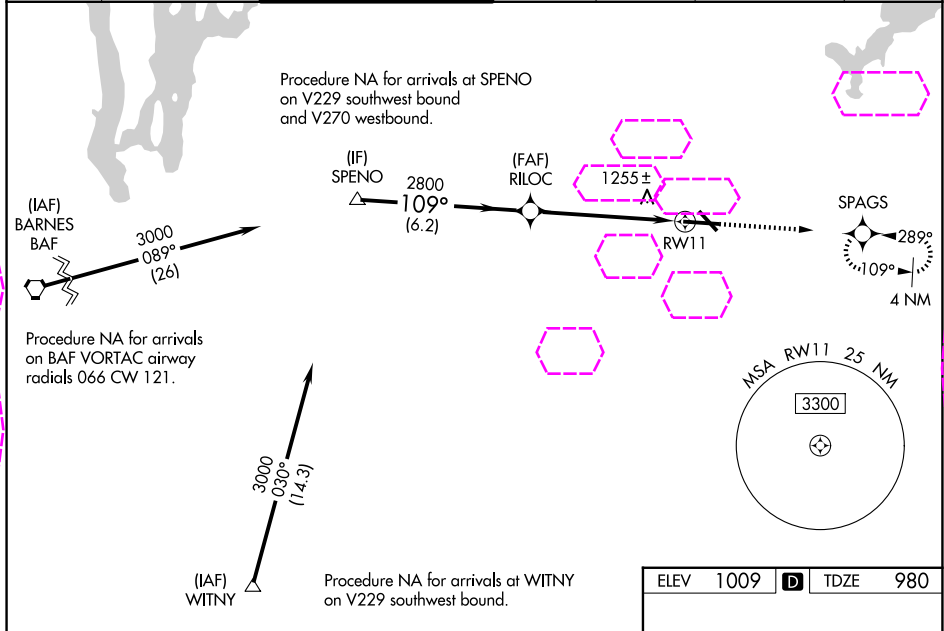
WORCESTER RGNL (ORH)

⚠ For uncompensated Baro-VNAV systems, LNAV/VNAV NA below -20°C (-4°F) or above 54°C (130°F).
DME/DME RNP-0.3 NA.
Inop table does not apply to LPV all Cats.
Inop table does not apply to LNAV Cats A/B.

ALSF-2

MISSED APPROACH: Climb to 2700 direct SPAGS and hold.

ATIS 126.55	YANKEE APP CON 119.0 327.1	WORCESTER TOWER ★ 120.5 (CTAF) 263.0	GND CON 123.85	CLNC DEL 128.65	CLNC DEL 119.0 (When twr closed)	UNICOM 122.95
----------------	-------------------------------	---	-------------------	--------------------	--	------------------



NE-1, 07 AUG 2025 to 04 SEP 2025

NE-1, 07 AUG 2025 to 04 SEP 2025