

WORCESTER, MASSACHUSETTS

AL-652 (FAA)

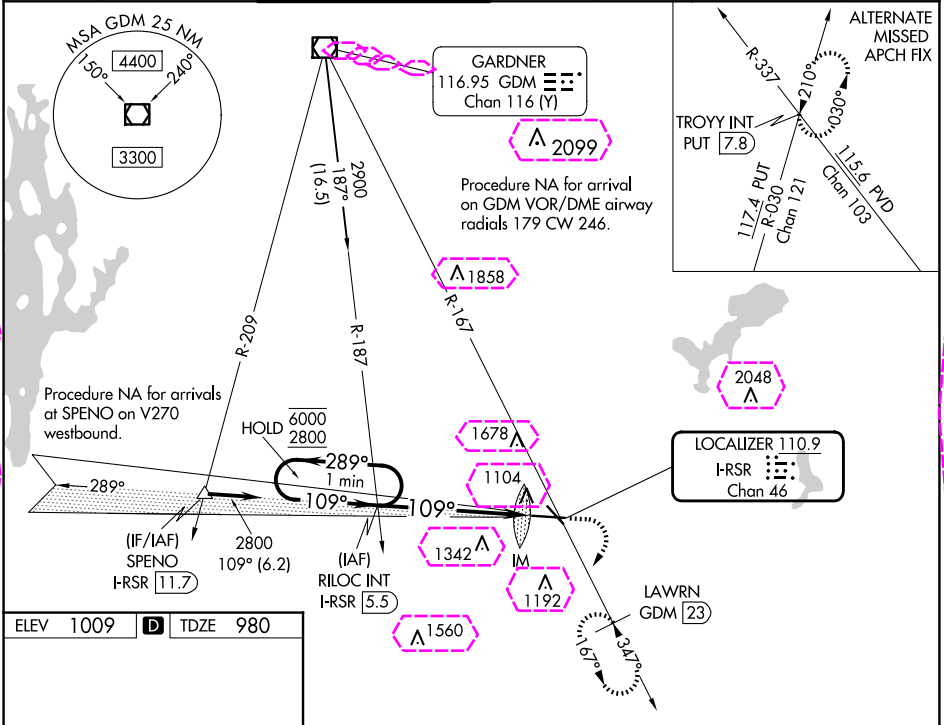
24305

LOC/DME I-RSR	APP CRS	Rwy ldg	7001
110.9	109°	TDZE	980
Chan 46		Apt Elev	1009

ILS or LOC RWY 11

WORCESTER RGNL (ORH)

<p>⚠ For inop ALS, increase S-LOC 11 Cats C and D visibility to 1 1/2 SM. When control tower closed: inop table does not apply to S-ILS 11 all Cats. When control tower closed: for inop ALS, increase S-LOC 11 Cat C and D visibility to 1 1/2 SM.</p>		ALSF-2	MISSED APPROACH: Climb to 1800 then climbing right turn to 3100 on heading 230° and on GDM VOR/DME R-167 to LAWRN/GDM 23 DME and hold, continue climb-in-hold to 3100.			
ATIS	BRADLEY APP CON	WORCESTER TOWER ★	GND CON	CLNC DEL	CLNC DEL	UNICOM
126.55	119.0 327.1	120.5 (CTAF) 263.0	123.85	128.65	119.0 (When twr closed)	122.95



ELEV 1009 TDZE 980

TDZ/CL Rwy 11
REIL Rws 15, 29 and 33
HIRL Rwy 11-29
MIRL Rwy 15-33

FAF to MAP 5.5 NM

Knots	60	90	120	150	180
Min:Sec	5:30	3:40	2:45	2:12	1:50

Ⓢ CIRCLING

One Minute Holding Pattern		RILOC INT I-RSR 5.5		<div><div>1800</div><div>↑</div></div> <div><div>3100</div><div>hdg 230°</div></div> <div>GDM R-167</div> <div>LAWRN GDM 23</div>	
<div>6000 ← 289°</div> <div>2800 ← 109°</div> <div>GS 3.00°</div> <div>TCH 55</div>		<div>2800</div> <div>109°</div> <div>I-RSR 1.4</div> <div>IM</div>		<div>4.1 NM</div> <div>1.4 NM</div> <div>0.1</div>	
CATEGORY	A	B	C	D	
S-ILS 11	1180/18 200 (200-½)				
S-LOC 11	1500/24	520 (500-½)	1500/55	520 (500-1)	
<div>CIRCLING</div>	1560-1 551 (600-1)	1740-1 731 (800-1)	2000-3	991 (1000-3)	

