

WORCESTER, MASSACHUSETTS

AL-652 (FAA)

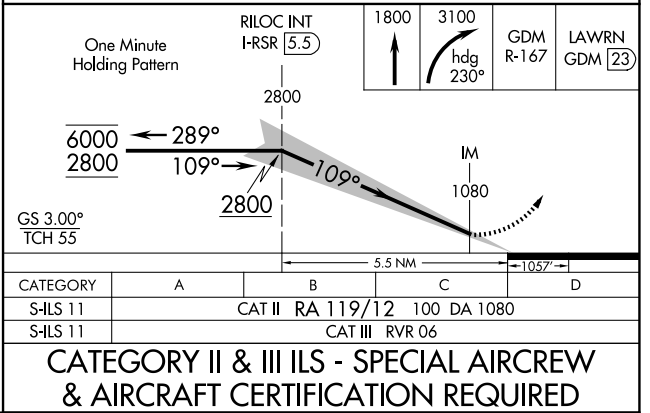
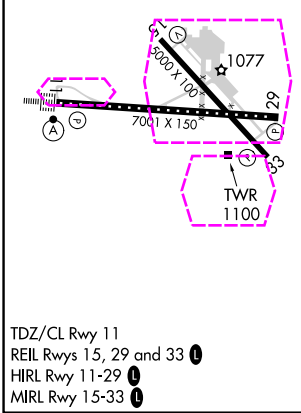
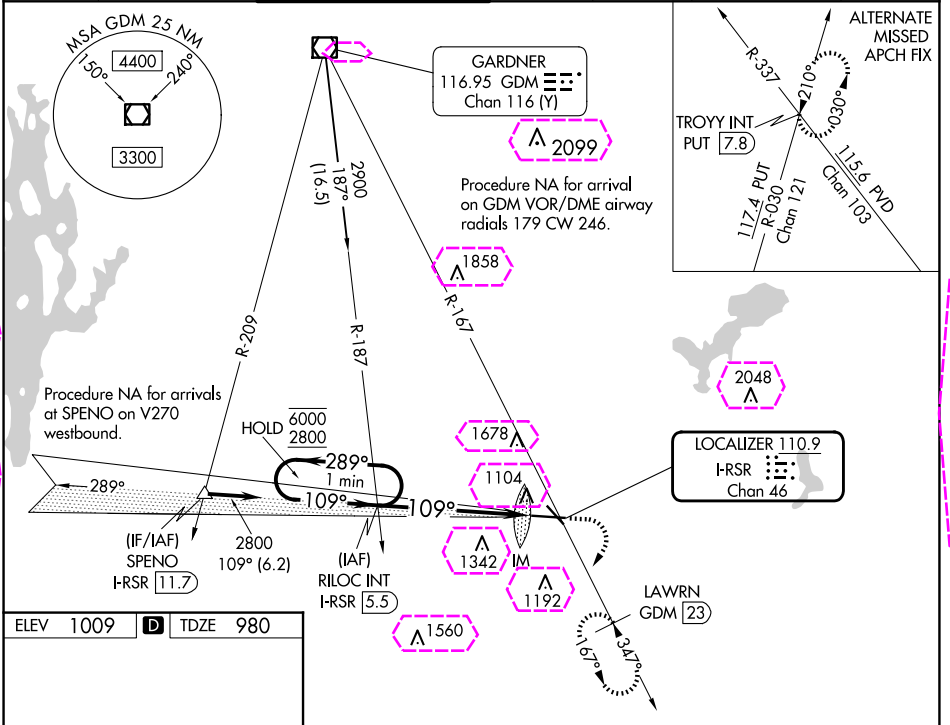
24305

LOC/DME I-RSR <b>110.9</b> Chan <b>46</b>	APP CRS <b>109°</b>	Rwy ldg TDZE <b>7001</b> <b>980</b> Apt Elev <b>1009</b>
---	------------------------	---

# ILS RWY 11 (CAT II & III)

WORCESTER RGNL (ORH)

ATIS <b>126.55</b>	BRADLEY APP CON <b>119.0 327.1</b>	WORCESTER TOWER ★ <b>120.5 (CTAF) 263.0</b>	GND CON <b>123.85</b>	CLNC DEL <b>128.65</b>	CLNC DEL <b>119.0</b> (When twr closed)	UNICOM <b>122.95</b>
-----------------------	---------------------------------------	--	--------------------------	---------------------------	---	-------------------------



WORCESTER, MASSACHUSETTS  
Amdt 25B 05OCT23

42°16'N-71°53'W

WORCESTER RGNL (ORH)  
ILS RWY 11 (CAT II & III)

NE-1, 10 JUL 2025 to 07 AUG 2025

NE-1, 10 JUL 2025 to 07 AUG 2025

WORCESTER, MASSACHUSETTS

AL-652 (FAA)

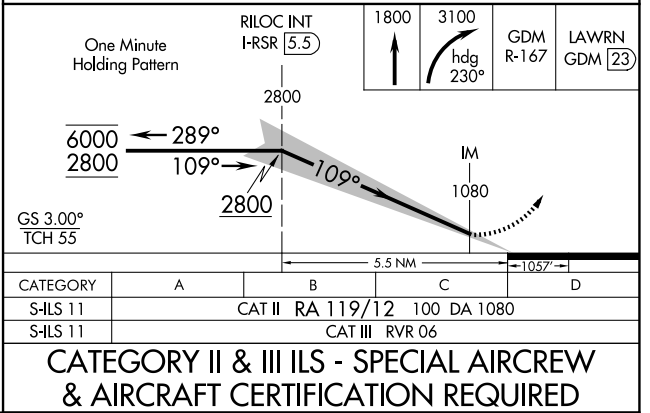
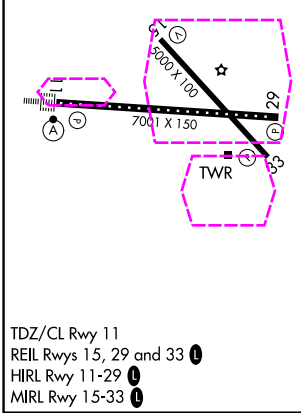
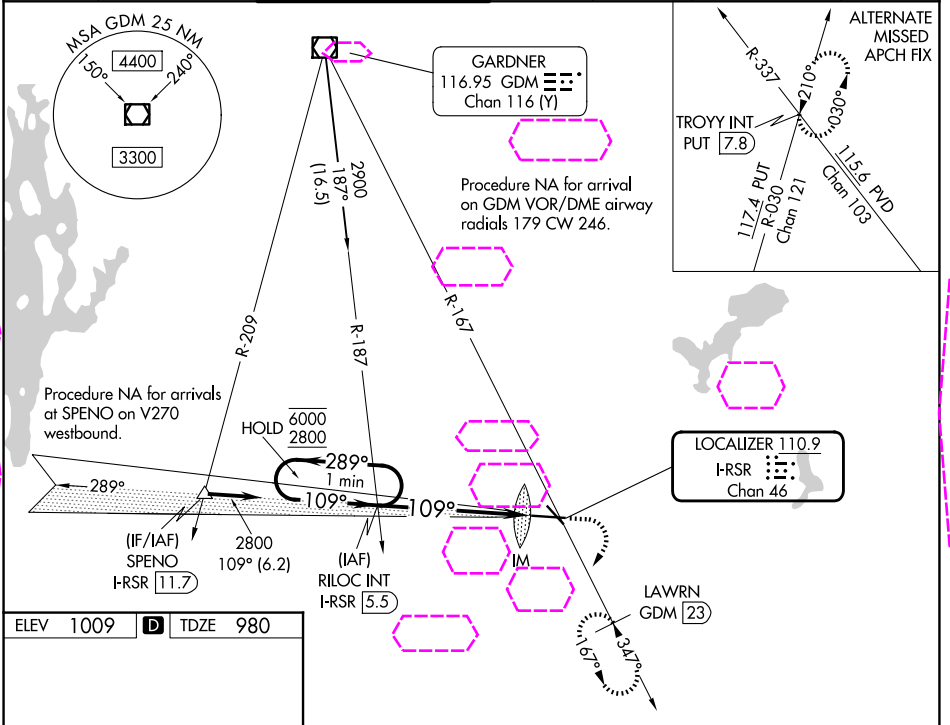
25219

LOC/DME I-RSR <b>110.9</b> Chan <b>46</b>	APP CRS <b>109°</b>	Rwy Ldg TDZE Apt Elev	<b>7001</b> <b>980</b> <b>1009</b>
---	------------------------	-----------------------------	--

# ILS RWY 11 (CAT II & III)

WORCESTER RGNL (ORH)

ATIS <b>126.55</b>	YANKEE APP CON <b>119.0 327.1</b>	WORCESTER TOWER ★ <b>120.5 (CTAF) 263.0</b>	GND CON <b>123.85</b>	CLNC DEL <b>128.65</b>	CLNC DEL <b>119.0</b> (When twr closed)	UNICOM <b>122.95</b>
-----------------------	--------------------------------------	--	--------------------------	---------------------------	---	-------------------------



WORCESTER, MASSACHUSETTS  
Amdt 25B 05OCT23

42°16'N-71°53'W

WORCESTER RGNL (ORH)  
ILS RWY 11 (CAT II & III)

NE-1, 07 AUG 2025 to 04 SEP 2025

NE-1, 07 AUG 2025 to 04 SEP 2025