

WHITE PLAINS, NEW YORK

AL-651 (FAA)

24361

WAAS CH 99410 W34A	APP CRS 343°	Rwy Idg TDZE Apt Elev	6549 401 439
--	------------------------	-----------------------------	---

RNAV (GPS) Y RWY 34

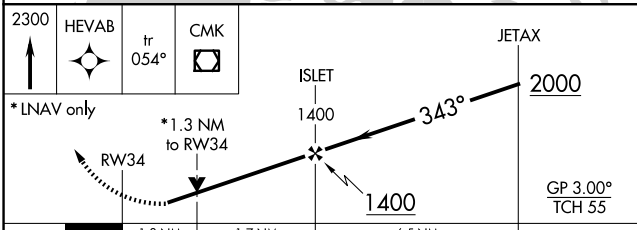
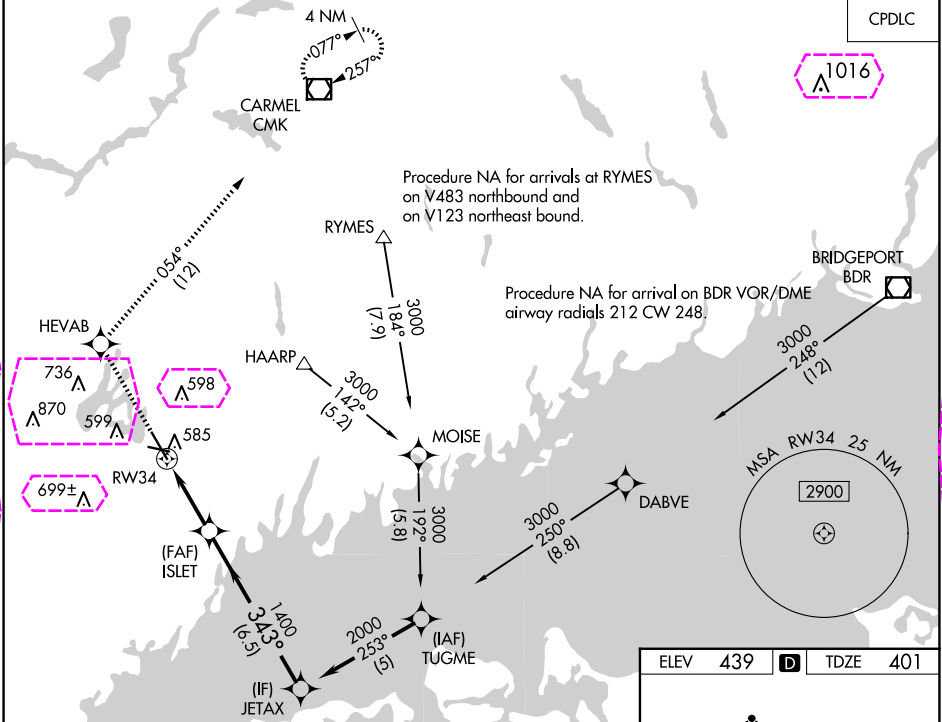
WESTCHESTER COUNTY (HPN)

▼ For uncompensated Baro-VNAV systems, LNAV/VNAV NA below -15°C (5°F) or above 54°C (130°F). Circling Rwy 11, 29 NA at night.

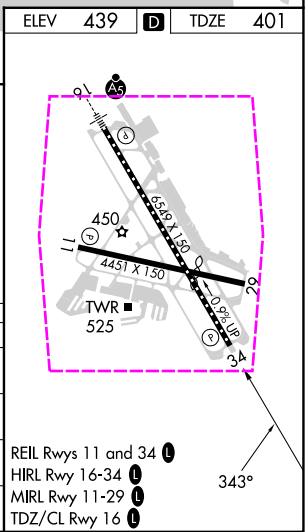
▲ Rwy 34 helicopter visibility reduction below ¾ SM NA. DME/DME RNP-0.3 NA.

MISSED APPROACH: Climb to 2300 direct HEVAB and on track 054° to CMK VOR/DME and hold.

D-ATIS 133.8	NEW YORK APP CON 120.8 126.4 257.65	WESTCHESTER TOWER ★ 118.575 (CTAF) 0 284.65	GND CON 121.825	CLNC DEL 127.25	CLNC DEL 126.4 (when twr closed)	UNICOM 122.95
------------------------	---	---	---------------------------	---------------------------	---	-------------------------



CATEGORY	A	B	C	D
LPV DA	723/60		322 (300-1¼)	
LNAV/VNAV DA	780-1½		379 (400-1½)	
LNAV MDA	840/50	439 (500-1)	840/60 439 (500-1¼)	840-1½ 439 (500-1½)
CIRCLING	980-1	541 (600-1)	1080-1¾ 641 (700-1¾)	1200-2½ 761 (800-2½)



WHITE PLAINS, NEW YORK
Amdt 3C 07DEC17

41°04'N-73°42'W

WESTCHESTER COUNTY (HPN) RNAV (GPS) Y RWY 34

NE-2, 10 JUL 2025 to 07 AUG 2025

NE-2, 10 JUL 2025 to 07 AUG 2025

WHITE PLAINS, NEW YORK

AL-651 (FAA)

25219

WAAS CH 99410 W34A	APP CRS 343°	Rwy Ldg TDZE Apt Elev	6549 401 439
--	------------------------	-----------------------------	---

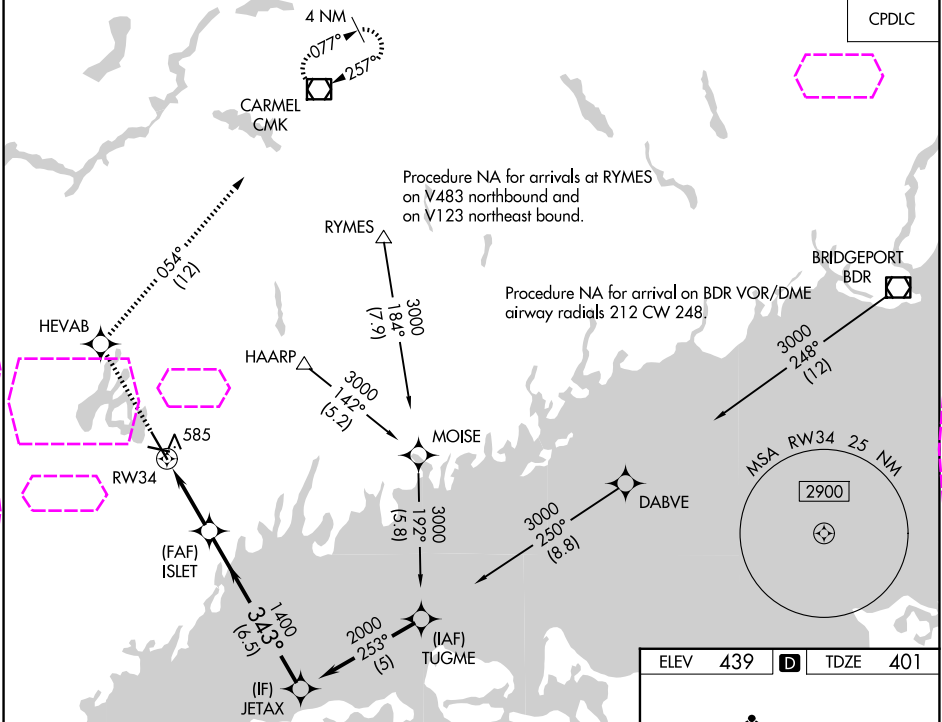
RNAV (GPS) Y RWY 34

WESTCHESTER COUNTY (HPN)

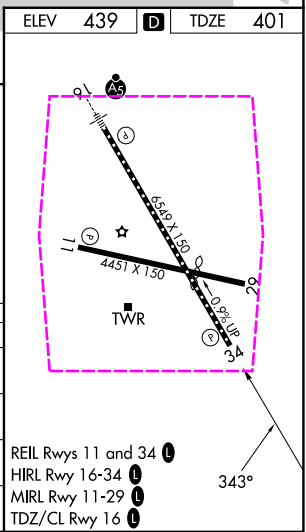
⚠ For uncompensated Baro-VNAV systems, LNAV/VNAV NA below -15°C (5°F) or above 54°C (130°F). Circling Rwy 11, 29 NA at night.
⚠ Rwy 34 helicopter visibility reduction below ¾ SM NA. DME/DME RNP-0.3 NA.

MISSED APPROACH: Climb to 2300 direct HEVAB and on track 054° to CMK VOR/DME and hold.

D-ATIS 133.8	NEW YORK APP CON 120.8 126.4 257.65	WESTCHESTER TOWER ★ 118.575 (CTAF) 0 284.65	GND CON 121.825	CLNC DEL 127.25	CLNC DEL 126.4 (when twr closed)	UNICOM 122.95
------------------------	---	---	---------------------------	---------------------------	---	-------------------------



2300 ↑	HEVAB ✦	tr 054°	CMK ◻					
*LNAV only					*1.3 NM to RW34			
					RW34			
					ISLET 1400		JETAX 2000	
					1400		GP 3.00° TCH 55	
					1.3 NM		1.7 NM	
					6.5 NM			
CATEGORY					A		B	
LPV DA					723/60		322 (300-1¼)	
LNAV/VNAV DA					780-1½		379 (400-1½)	
LNAV MDA					840/50 439 (500-1)		840/60 439 (500-1¼)	
CIRCLING					980-1 541 (600-1)		1080-1¾ 641 (700-1¾)	
							840-1½ 439 (500-1½)	
							1200-2½ 761 (800-2½)	



WHITE PLAINS, NEW YORK
Amdt 3C 07DEC17

41°04'N-73°42'W

WESTCHESTER COUNTY (HPN)

RNAV (GPS) Y RWY 34

NE-2, 07 AUG 2025 to 04 SEP 2025

NE-2, 07 AUG 2025 to 04 SEP 2025