

WHITE PLAINS, NEW YORK

AL-651 (FAA)

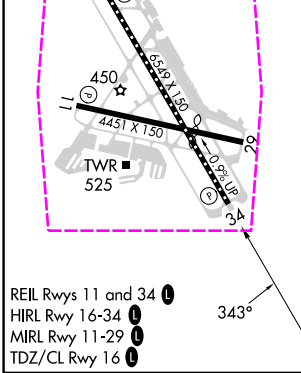
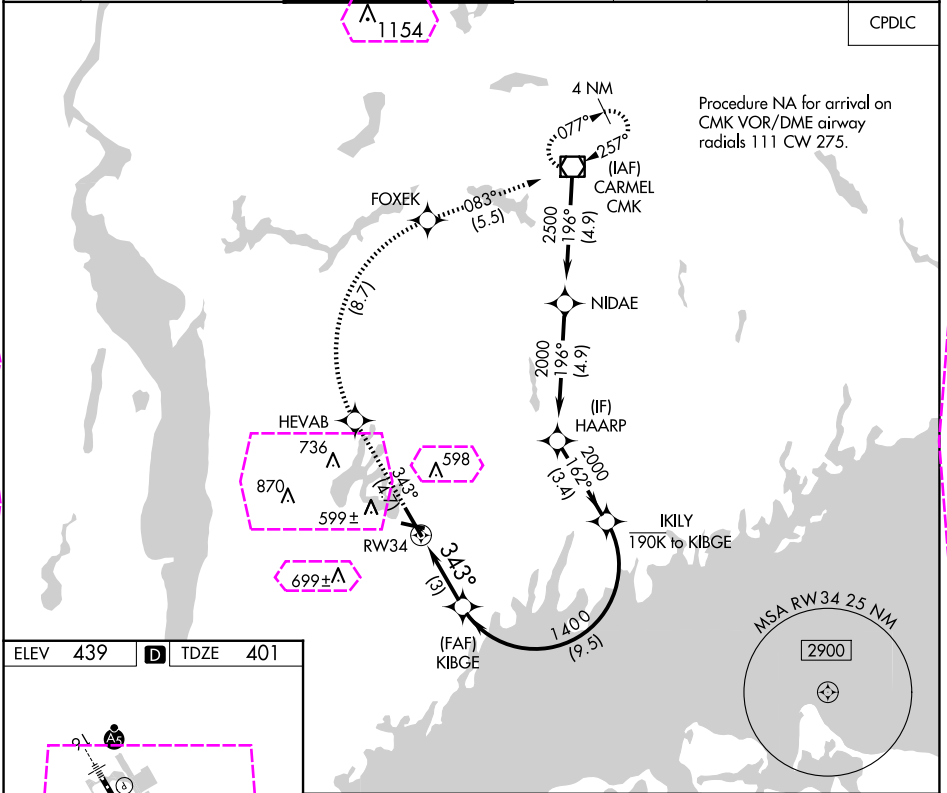
24361

APP CRS 343°	Rwly Idg 6549
TDZE 401	Apt Elev 439

RNAV (RNP) Z RWY 34

WESTCHESTER COUNTY (HPN)

▼ For uncompensated Baro-VNAV systems, procedure NA below -14°C (7°F) or above 54°C (130°F). RF required. GPS required.			MISSED APPROACH: Climb to 3000 on track 343° to HEVAB, right turn to FOXEK, then on track 083° to CMK VOR/DME and hold.			
D-ATIS 133.8	NEW YORK APP CON 120.8 126.4 257.65	WESTCHESTER TOWER ★ 118.575 (CTAF) 0 284.65	GND CON 121.825	CLNC DEL 127.25	CLNC DEL 126.4 (when twr closed)	UNICOM 122.95



3000	↑ tr 343°	HEVAB	FOXEK	tr 083°	CMK	VGSI and RNAV glidepath not coincident (VGSI Angle 3.00/TCH 56).
CATEGORY		A	B	C	D	
RNP 0.30 DA		788-1½		387 (400-1½)		

AUTHORIZATION REQUIRED

WHITE PLAINS, NEW YORK
Orig-C 07DEC17

41°04'N-73°42'W

WESTCHESTER COUNTY (HPN)
RNAV (RNP) Z RWY 34

NE-2, 10 JUL 2025 to 07 AUG 2025

NE-2, 10 JUL 2025 to 07 AUG 2025

