

WHITE PLAINS, NEW YORK

AL-651 (FAA)

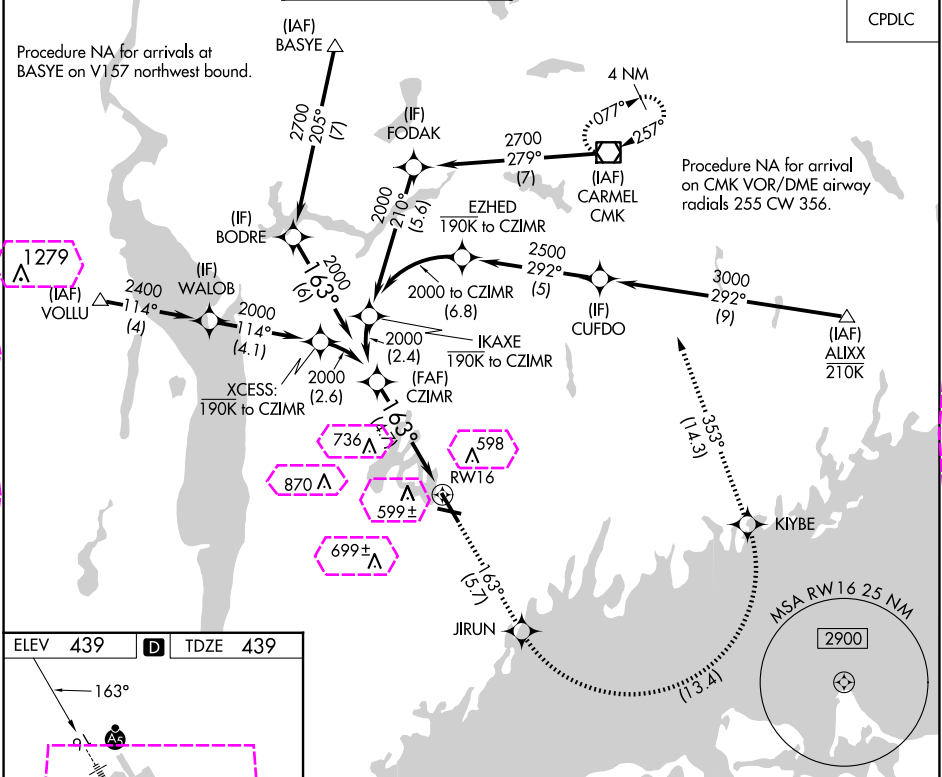
24361

APP CRS	Rwy Idg	6549
163°	TDZE	439
	Apt Elev	439

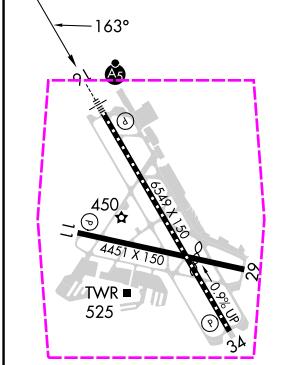
RNAV (RNP) Z RWY 16

WESTCHESTER COUNTY (HPN)

RNP AR APCH - GPS.			MALSR	MISSED APPROACH: Climb to 3000 on track 163° to JIRUN, left turn to KIYBE, then track 353° to CMK VOR/DME and hold.		
For uncompensated Baro-VNAV systems, procedure NA below -14°C or above 54°C.						
D-ATIS	NEW YORK APP CON	WESTCHESTER TOWER ★	GND CON	CLNC DEL	CLNC DEL	UNICOM
133.8	120.8 126.4 257.65	118.575 (CTAF) 284.65	121.825	127.25	126.4 (when twr closed)	122.95



ELEV	439	TDZE	439
------	-----	------	-----



- REIL Rws 11 and 34
- HIRL Rwy 16-34
- MIRL Rwy 11-29
- TDZ/CL Rwy 16

See planview for multiple IF locations.			
3000	JIRUN	KIYBE	CMK
tr 163°		tr 353°	
CATEGORY	A	B	C
RNP 0.15 DA	826/35	387 (400-5%)	
RNP 0.30 DA	950/55	511 (600-1)	
AUTHORIZATION REQUIRED			

WHITE PLAINS, NEW YORK
Orig-D 11AUG22

41°04'N-73°42'W

WESTCHESTER COUNTY (HPN)
RNAV (RNP) Z RWY 16

APP CRS 163°	Rwy Ldg 6549 TDZE 439 Apt Elev 439
------------------------	---

RNAV (RNP) Z RWY 16
WESTCHESTER COUNTY (HPN)

	RNP AR APCH - GPS.
--	--------------------

T For uncompensated Baro-VNAV systems, procedure NA below -14°C or above 54°C.

MALSR



MISSED APPROACH: Climb to 3000 on track 163° to JIRUN, left turn to KIYBE, then track 353° to CMK VOR/DME and hold.

D-ATIS
133.8

NEW YORK APP CON
120.8 126.4 257.65

WESTCHESTER TOWER ★
118.575 (CTAF) **L** 284.65

GND CON
121.825

CLNC DEL
127.25

CLNC DEL
126.4
(when twr closed)

UNICOM
122.95

CPDLC

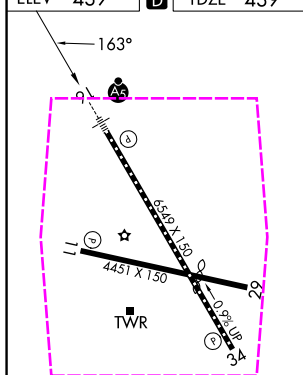
Procedure NA for arrivals at BASYE on V157 northwest bound.

Procedure NA for arrival
on CMK VOR/DME airway
radials 255 CW 356.

NE-2, 07 AUG 2025 to 04 SEP 2025

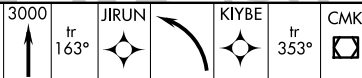
NE-2, 07 AUG 2025 to 04 SEP 2025

FIEV	439		TDZE	439
------	-----	---	------	-----

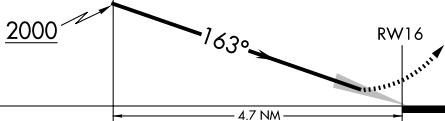


REIL Rwy 11 and 34 **L**
HIRL Rwy 16-34 **L**
MIRL Rwy 11-29 **L**
TDZ/CL Rwy 16 **L**

See planview for multiple IF locations.



GP 3.00°
TCH 55



CATEGORY	A	B	C	D
RNP 0.15 DA		826/35	387 (400-5%)	
RNP 0.30 DA		950/55	511 (600-1)	

AUTHORIZATION REQUIRED

WHITE PLAINS, NEW YORK
Orig-D 11AUG22

41°04'N-73°42'W

WESTCHESTER COUNTY (HPN)
RNAV (RNP) Z RWY 16