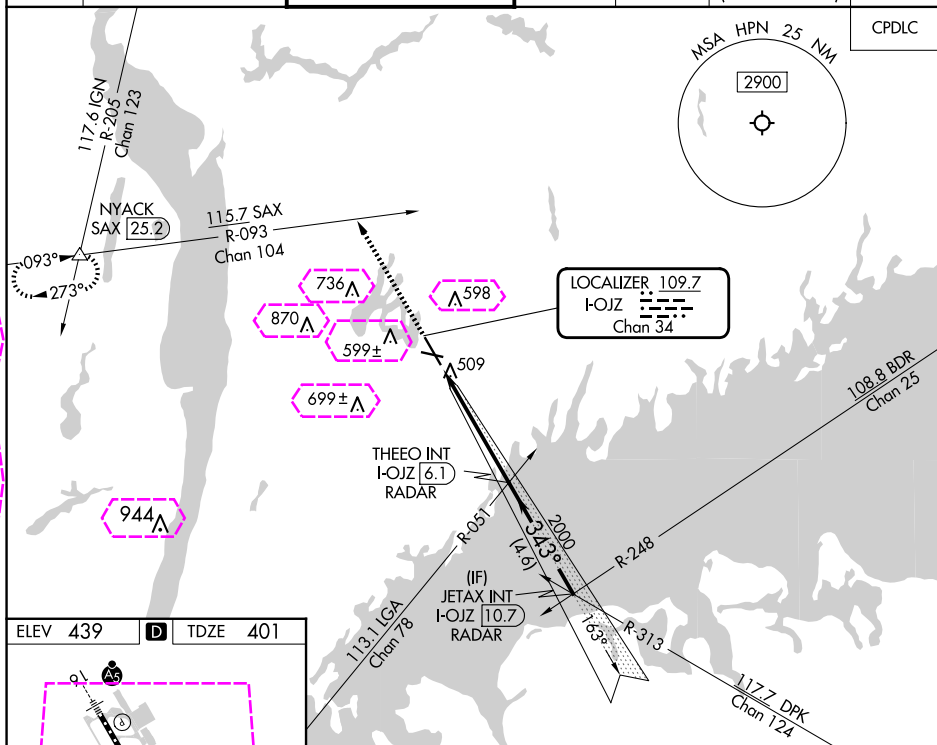


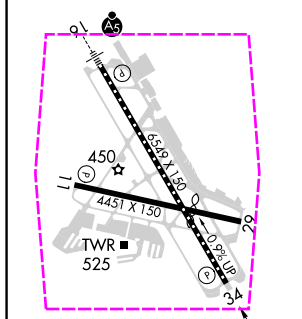
ILS or LOC RWY 34
WESTCHESTER COUNTY (HPN)

MISSED APPROACH: Climb to 3000 on heading 343° and SAX R-093 to NYACK INT/SAX 25.2 DME and hold.

D-ATIS 133.8	NEW YORK APP CON 120.8 126.4 257.65	WESTCHESTER TOWER ★ 118.575 (CTAF) 0 284.65	GND CON 121.825	CLNC DEL 127.25	CLNC DEL 126.4 (when twr closed)	UNICOM 122.95
------------------------	---	--	---------------------------	---------------------------	---	-------------------------



ELEV 439	D	TDZE 401
----------	----------	----------



REIL Rwy 11 and 34 ●
HIRL Rwy 16-34 ●
MIRL Rwy 11-29 ●
TDZ/CL Rwy 16 ●

FAF to MAP 4.9 NM

Knots	60	90	120	150	180
Min:Sec	4:54	3:16	2:27	1:58	1:38

3000 ↑ hdg 343°	SAX R-093	NYACK INT	THEEO INT I-OJZ 6.1 RADAR	JETAX INT I-OJZ 10.7 RADAR
*LOC only				
I-OJZ 1.2	I-OJZ 2.3	2000	343°	2000
1.2 NM		3.7 NM	4.6 NM	GS 3.00° TCH 55
CATEGORY	A	B	C	D
S-ILS 34	742/60 341 (400-1¼)			
S-LOC 34	800/55	399 (400-1)	800/60	399 (400-1¼)
C CIRCLING	980-1	541 (600-1)	1080-1¾ 641 (700-1¾)	1200-2½ 761 (800-2½)

WESTCHESTER COUNTY (HPN)
ILS or LOC RWY 34

WHITE PLAINS, NEW YORK

AL-651 (FAA)

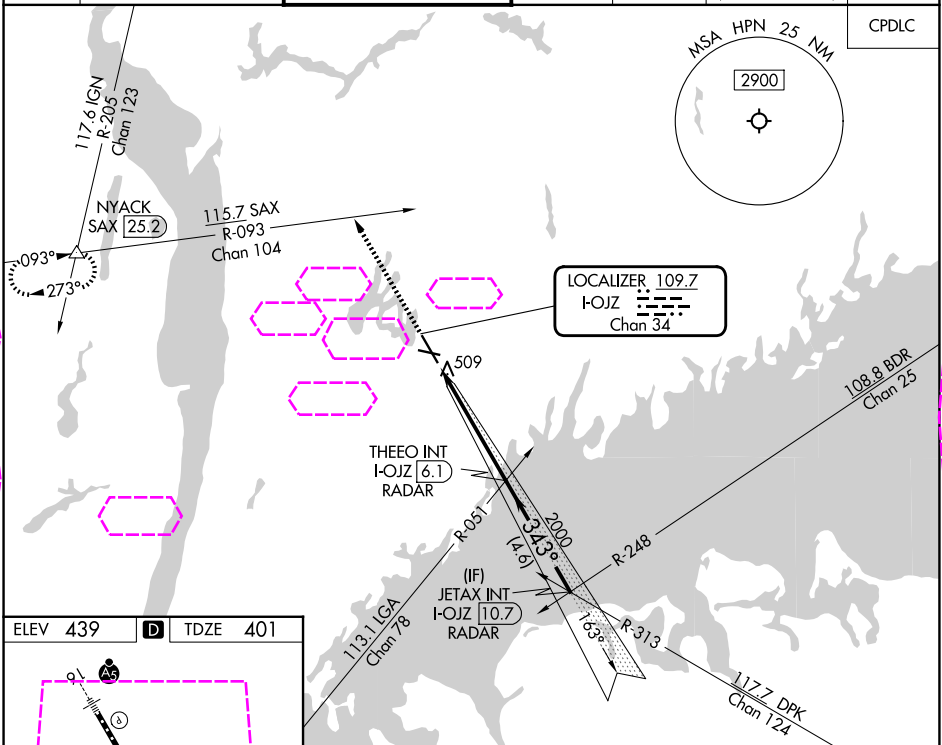
25219

LOC/DME I-OJZ 109.7 Chan 34	APP CRS 343°	Rwy Ldg 6549 TDZE 401 Apt Elev 439
---	------------------------	---

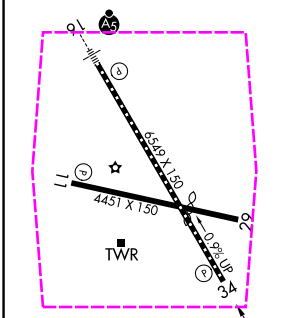
ILS or LOC RWY 34
WESTCHESTER COUNTY (HPN)

RADAR required for procedure entry.		MISSED APPROACH: Climb to 3000 on heading 343° and SAX R-093 to NYACK INT/SAX 25.2 DME and hold.
▼	Circling Rwy 11, 29 NA at night.	
▲	Rwy 34 helicopter visibility reduction below ¾ SM NA.	

D-ATIS 133.8	NEW YORK APP CON 120.8 126.4 257.65	WESTCHESTER TOWER ★ 118.575 (CTAF) 284.65	GND CON 121.825	CLNC DEL 127.25	CLNC DEL 126.4 (when twr closed)	UNICOM 122.95
------------------------	---	--	---------------------------	---------------------------	---	-------------------------



ELEV 439	D	TDZE 401
-----------------	----------	-----------------



REIL Rwy 11 and 34					
HIRL Rwy 16-34					
MIRL Rwy 11-29					
TDZ/CL Rwy 16					
FAF to MAP 4.9 NM					
Knots	60	90	120	150	180
Min:Sec	4:54	3:16	2:27	1:58	1:38

3000 hdg 343° *LOC only	SAX R-093	NYACK INT	THEEO INT I-OJZ 6.1 RADAR	JETAX INT I-OJZ 10.7 RADAR
	I-OJZ 1.2	*I-OJZ 2.3	2000	2000
GS 3.00° TCH 55				
1.2 NM 3.7 NM 4.6 NM				
CATEGORY	A	B	C	D
S-ILS 34	742/60 341 (400-1¼)			
S-LOC 34	800/55	399 (400-1)	800/60	399 (400-1¼)
CIRCLING	980-1	541 (600-1)	1080-1¾ 641 (700-1¾)	1200-2½ 761 (800-2½)

WHITE PLAINS, NEW YORK
Amdt 5C 25FEB21

41°04'N-73°42'W

WESTCHESTER COUNTY (HPN)
ILS or LOC RWY 34

NE-2, 07 AUG 2025 to 04 SEP 2025

NE-2, 07 AUG 2025 to 04 SEP 2025