

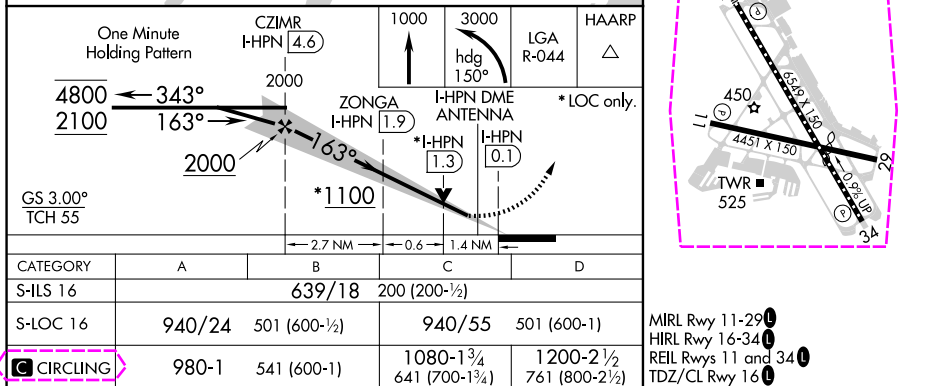
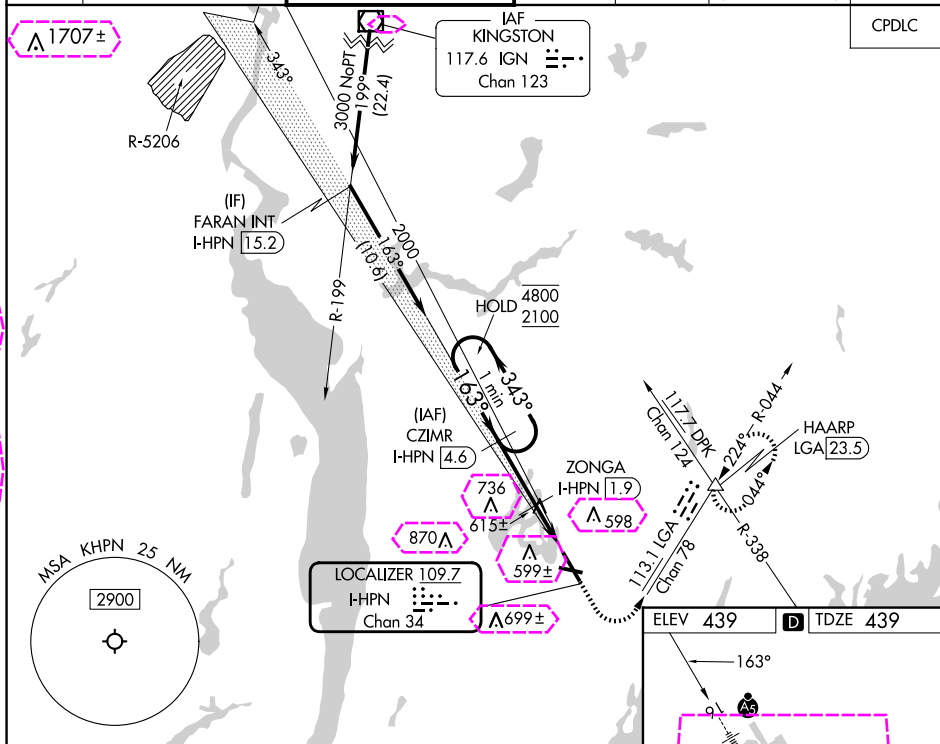


| | | |
|---|------------------------|---|
| LOC/DME I-HPN 109.7 Chan 34 | APP CRS 163° | Rwy Idg 6549 TDZE 439 Apt Elev 439 |
|---|------------------------|---|

ILS or LOC RWY 16
WESTCHESTER COUNTY (HPN)

| | | | | | | | |
|-------------------------------------|--|--|--|--|--|--|------------------|
| DME required for LOC only. | | | | <div>MALS R</div> <div></div> | MISSED APPROACH: Climb to 1000 then climbing left turn to 3000 on heading 150° and LGA VOR/DME R-044 to HAARP INT/LGA 23.5 DME and hold, continue climb-in-hold to 3000. | | |
| <div><div>▼</div><div>▲</div></div> | Circling Rwy 11, 29 NA at night. For inop ALS, increase S-LOC 16 Cats C/D visibility to 1% SM. | | | | | | |
| D-ATIS 133.8 | NEW YORK APP CON 120.8 126.4 257.65 | | WESTCHESTER TOWER ★ 118.575 (CTAF)  284.65 | GND CON 121.825 | CLNC DEL 127.25 | CLNC DEL 126.4 (when vtr closed) | UNICOM 122.95 |



WHITE PLAINS, NEW YORK

AL-651 (FAA)

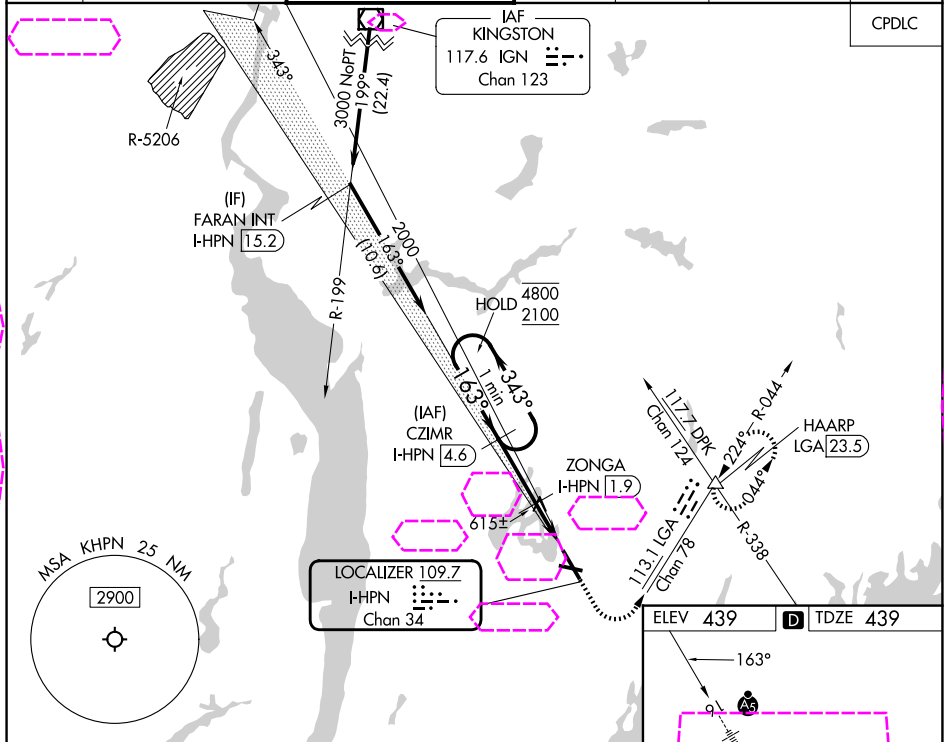
25219

| | | |
|---|------------------------|---|
| LOC/DME I-HPN 109.7 Chan 34 | APP CRS 163° | Rwy Ldg 6549 TDZE 439 Apt Elev 439 |
|---|------------------------|---|

ILS or LOC RWY 16

WESTCHESTER COUNTY (HPN)

| | | | | | | |
|---|---|--|--|---------------------------|---|-------------------------|
| DME required for LOC only. | | MALSR | MISSED APPROACH: Climb to 1000 then climbing left turn to 3000 on heading 150° and LGA VOR/DME R-044 to HAARP INT/LGA 23.5 DME and hold, continue climb-in-hold to 3000. | | | |
| Circling Rwy 11, 29 NA at night. For inop ALS, increase S-LOC 16 Cats C/D visibility to 1 3/8 SM. | | | | | | |
| D-ATIS 133.8 | NEW YORK APP CON 120.8 126.4 257.65 | WESTCHESTER TOWER ★ 118.575 (CTAF) 0 284.65 | GND CON 121.825 | CLNC DEL 127.25 | CLNC DEL 126.4 (when twr closed) | UNICOM 122.95 |



| | | | | | | |
|----------------------------|--------|-----------------|-------------------------------|-------------------------------|-----------|-------|
| One Minute Holding Pattern | | CZIMR I-HPN 4.6 | 1000 | 3000 | LGA R-044 | HAARP |
| 4800 ← 343° | | 2000 | hdg 150° | | | |
| 2100 → 163° | | ZONGA I-HPN 1.9 | I-HPN DME ANTENNA | * LOC only. | | |
| 2000 | | | * I-HPN 1.3 | I-HPN 0.1 | | |
| GS 3.00° TCH 55 | | | | | | |
| | | 2.7 NM | 0.6 | 1.4 NM | | |
| CATEGORY | A | B | C | D | | |
| S-ILS 16 | | 639/18 | 200 (200-1/2) | | | |
| S-LOC 16 | 940/24 | 501 (600-1/2) | 940/55 | 501 (600-1) | | |
| CIRCLING | 980-1 | 541 (600-1) | 1080-1 3/4 641 (700-1 3/4) | 1200-2 1/2 761 (800-2 1/2) | | |

MIRL Rwy 11-29
HIRL Rwy 16-34
REIL Rws 11 and 34
TDZ/CL Rwy 16

WHITE PLAINS, NEW YORK
Amdt 25C 25FEB21

41°04'N-73°42'W

WESTCHESTER COUNTY (HPN)
ILS or LOC RWY 16