

WHITE PLAINS, NEW YORK

AL-651 (FAA)

24361

LOC/DME I-HPN <b>109.7</b> Chan <b>34</b>	APP CRS <b>163°</b>	Rwy Idg <b>6549</b> TDZE <b>439</b> Apt Elev <b>439</b>
---	------------------------	---

# ILS RWY 16 (SA CAT I & II)

WESTCHESTER COUNTY (HPN)

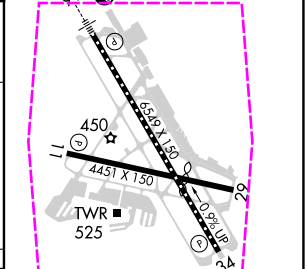
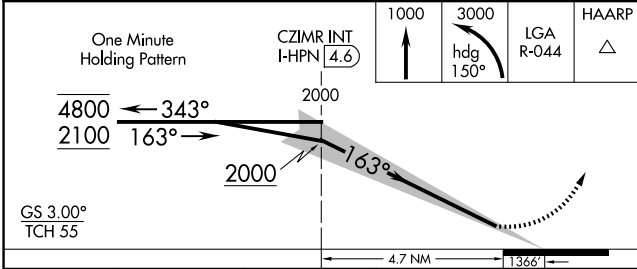
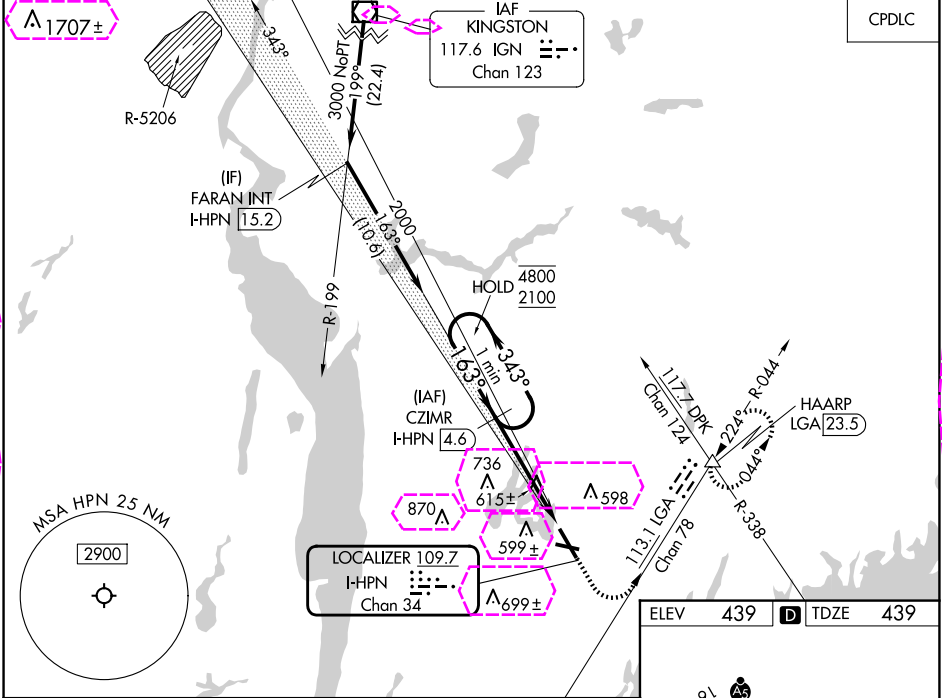
**SA CAT I:** Requires specific OPSPEC, MSPEC, or LOA approval and use of HUD to DH.

**SA CAT II:** Reduced lighting: Requires specific OPSPEC, MSPEC, or LOA approval and use of autoland or HUD to touchdown. Procedure NA when tower closed.

**MALSR**

**MISSED APPROACH:** Climb to 1000 then climbing left turn to 3000 on heading 150° and LGA VOR/DME R-044 to HAARP INT/LGA 23.5 DME and hold, continue climb-in-hold to 3000.

D-ATIS <b>133.8</b>	NEW YORK APP CON <b>120.8 126.4 257.65</b>	WESTCHESTER TOWER ★ <b>118.575 (CTAF) 0 284.65</b>	GND CON <b>121.825</b>	CLNC DEL <b>127.25</b>	CLNC DEL <b>126.4</b> (when twr closed)	UNICOM <b>122.95</b>
------------------------	---	---	---------------------------	---------------------------	---	-------------------------



CATEGORY	A	B	C	D
S-ILS 16	SA CAT I RA 198/14	150	DA 589	
S-ILS 16	SA CAT II RA 113/12	100	DA 539	

**SA CATEGORY I & II SPECIAL AIRCREW & AIRCRAFT CERTIFICATION REQUIRED**

MIRL Rwy 11-29  
HIRL Rwy 16-34  
REIL Rwy 11 and 34  
TDZ/CL Rwy 16

NE-2, 10 JUL 2025 to 07 AUG 2025

NE-2, 10 JUL 2025 to 07 AUG 2025

WHITE PLAINS, NEW YORK

AL-651 (FAA)

25219

LOC/DME I-HPN	APP CRS	Rwy Ldg
109.7	163°	6549
Chan 34		
TDZE		
439		
Apt Elev		
439		

# ILS RWY 16 (SA CAT I & II)

WESTCHESTER COUNTY (HPN)

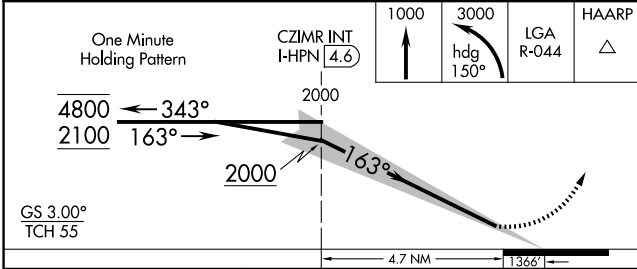
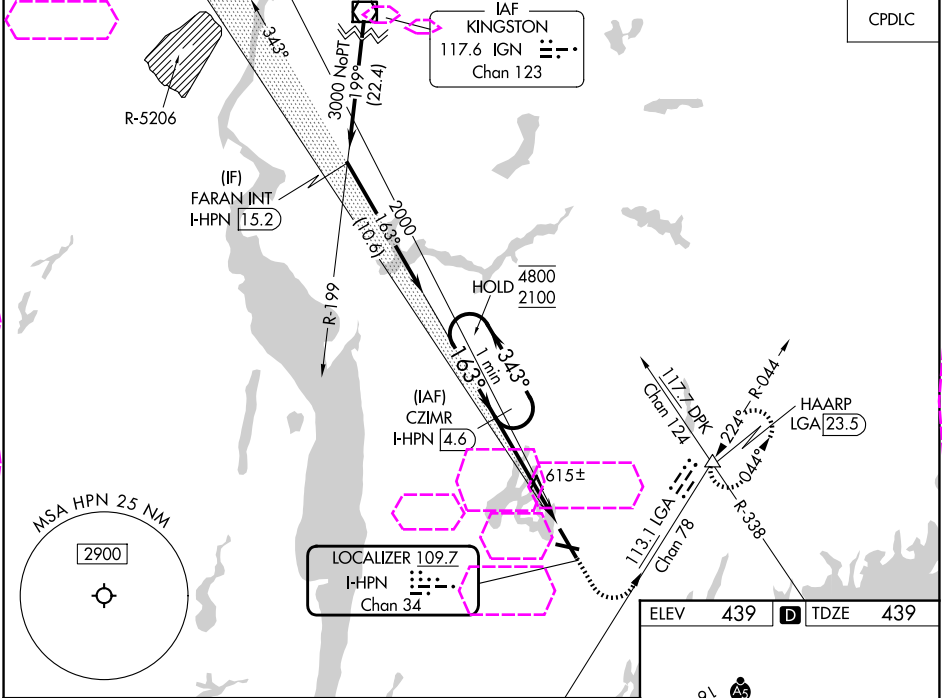
**SA CAT I:** Requires specific OPSPEC, MSPEC, or LOA approval and use of HUD to DH.

**SA CAT II:** Reduced lighting: Requires specific OPSPEC, MSPEC, or LOA approval and use of autoland or HUD to touchdown. Procedure NA when tower closed.

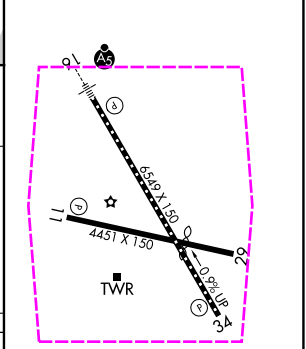
**MALSR**

**MISSED APPROACH:** Climb to 1000 then climbing left turn to 3000 on heading 150° and LGA VOR/DME R-044 to HAARP INT/LGA 23.5 DME and hold, continue climb-in-hold to 3000.

D-ATIS	NEW YORK APP CON	WESTCHESTER TOWER ★	GND CON	CLNC DEL	CLNC DEL	UNICOM
133.8	120.8 126.4 257.65	118.575 (CTAF) 0 284.65	121.825	127.25	126.4 (when twr closed)	122.95



ELEV	439	TDZE	439
------	-----	------	-----



CATEGORY	A	B	C	D
S-ILS 16	SA CAT I	RA 198/14	150	DA 589
S-ILS 16	SA CAT II	RA 113/12	100	DA 539

**SA CATEGORY I & II SPECIAL AIRCREW & AIRCRAFT CERTIFICATION REQUIRED**

- MIRL Rwy 11-29
- HIRL Rwy 16-34
- REIL Rwy 11 and 34
- TDZ/CL Rwy 16

NE-2, 07 AUG 2025 to 04 SEP 2025

NE-2, 07 AUG 2025 to 04 SEP 2025