

SAGINAW, MICHIGAN

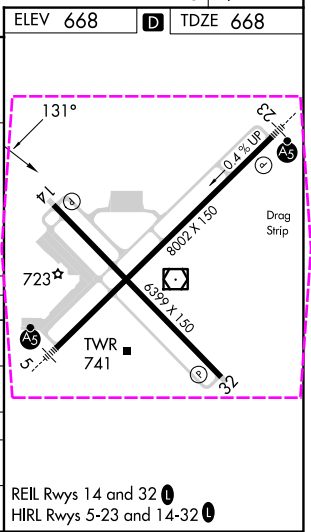
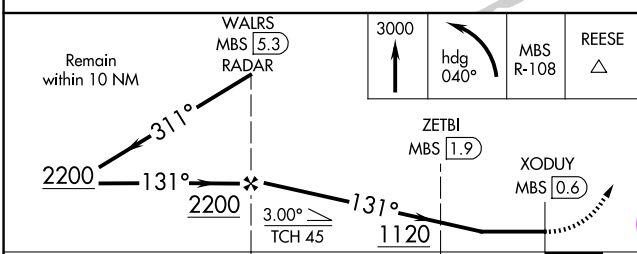
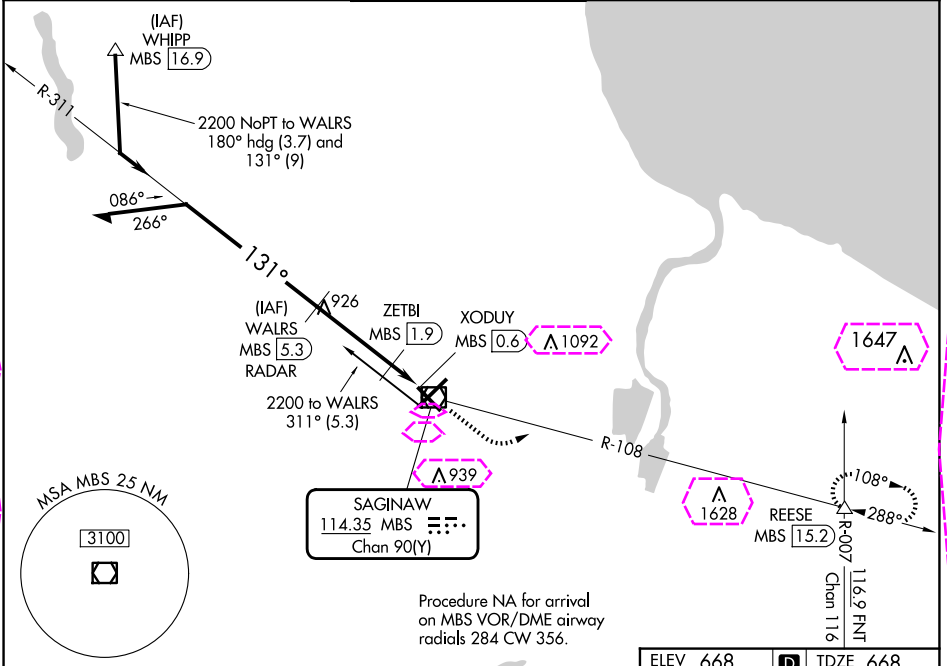
AL-648 (FAA)

24305

VOR/DME MBS 114.35 Chan 90 (Y)	APP CRS 131°	Rwy Idg 6399 TDZE 668 Apt Elev 668
--	------------------------	---

VOR RWY 14
MBS INTL (MBS)

DME or RADAR required.		MISSED APPROACH: Climb to 3000 then left turn on heading 040° and MBS R-108 to REESE INT/15.2 DME and hold.			
ATIS 125.925	GREAT LAKES APP CON★ 126.45 235.625	SAGINAW TOWER★ 120.1(CTAF) 257.7	GND CON 121.7	CLNC DEL 121.85	UNICOM 122.95



CATEGORY	A	B	C	D
S-14	1120-1 452 (500-1)		1120-1 $\frac{3}{8}$ 452 (500-1 $\frac{3}{8}$)	
CIRCLING	1120-1 452 (500-1)		1240-1 $\frac{1}{2}$ 572 (600-1 $\frac{1}{2}$)	1240-2 572 (600-2)
ZETBI FIX MINIMUMS (DME REQUIRED)				
S-14	1040-1 372 (400-1)		1040-1 $\frac{3}{8}$ 372 (400-1 $\frac{3}{8}$)	
CIRCLING	1080-1 412 (500-1)	1120-1 452 (500-1)	1240-1 $\frac{1}{2}$ 572 (600-1 $\frac{1}{2}$)	1240-2 572 (600-2)

SAGINAW, MICHIGAN
Amdt 14A 25JAN24

43°32'N-84°05'W

MBS INTL (MBS)
VOR RWY 14

EC-1, 10 JUL 2025 to 07 AUG 2025

EC-1, 10 JUL 2025 to 07 AUG 2025

