

SAGINAW, MICHIGAN

AL-648 (FAA)

22363

WAAS CH <b>82010</b> <b>W05A</b>	APP CRS <b>053°</b>	Rwy Idg TDZE Apt Elev	<b>8002</b> <b>666</b> <b>668</b>
--	------------------------	-----------------------------	---

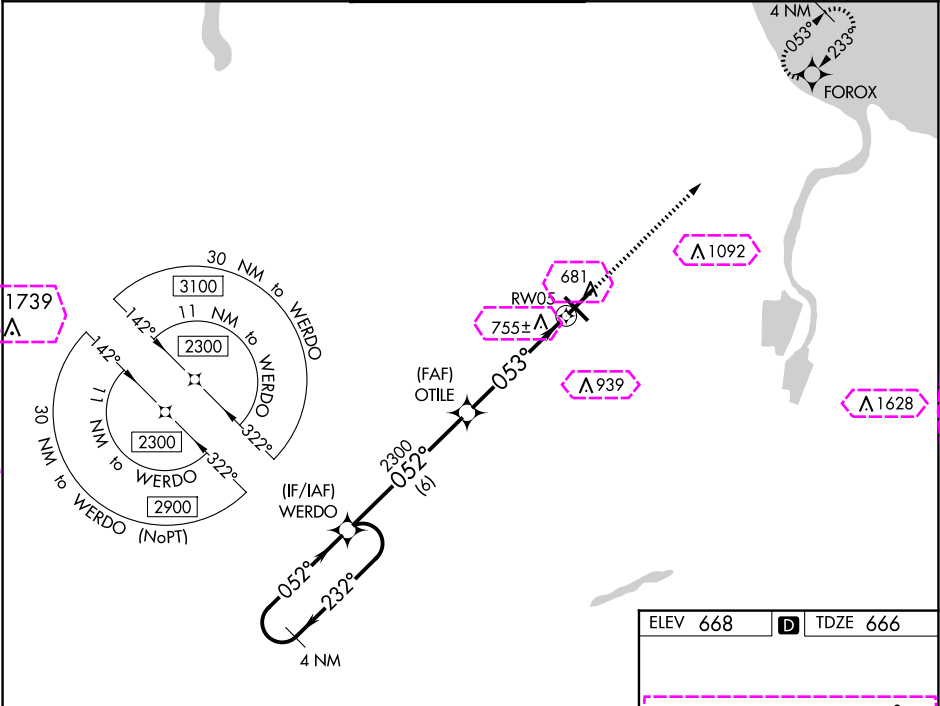
RNAV (GPS) RWY 5  
MBS INTL (MBS)

**V** For uncompensated Baro-VNAV systems, LNAV/VNAV NA below -18°C (0°F) or above 54°C (130°F). DME/DME RNP-0.3 NA. For inoperative ALS, increase LNAV/VNAV all Cats visibility to RVR 4500 and LNAV Cats C/D visibility to RVR 6000.  
\*\* RVR 1800 authorized with use of FD or AP or HUD to DA.

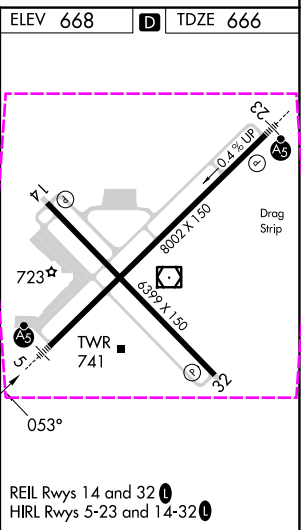
MALSR

MISSED APPROACH:  
Climb to 2300 direct  
FOROX and hold.

ATIS <b>125.925</b>	GREAT LAKES APP CON* <b>126.45 235.625</b>	SAGINAW TOWER * <b>120.1(CTAF) 257.7</b>	GND CON <b>121.7</b>	CLNC DEL <b>121.85</b>	UNICOM <b>122.95</b>
------------------------	---	---	-------------------------	---------------------------	-------------------------



4 NM Holding Pattern				
WERDO				
OTILE				
RW05				
FOROX				
* 1.1 NM to RW05				
* LNAV only.				
GP 3.00° TCH 50				
CATEGORY	A	B	C	D
LPV DA**		866/24	200 (200-½)	
LNAV/ VNAV DA		955/24	289 (300-½)	
LNAV MDA	1080/24	414 (500-½)	1080/40	414 (500-¾)
<b>CIRCLING</b>	1080-1 412 (500-1)	1120-1 452 (500-1)	1240-1½ 572 (600-1½)	1240-2 572 (600-2)



SAGINAW, MICHIGAN  
Amdt 2 01FEB18

43°32'N - 84°05'W

MBS INTL (MBS)  
RNAV (GPS) RWY 5

SAGINAW, MICHIGAN

AL-648 (FAA)

25219

WAAS CH <b>82010</b> <b>W05A</b>	APP CRS <b>053°</b>	Rwy Ldg TDZE Apt Elev	<b>8002</b> <b>666</b> <b>668</b>
--	------------------------	-----------------------------	---

# RNAV (GPS) RWY 5

MBS INTL (MBS)

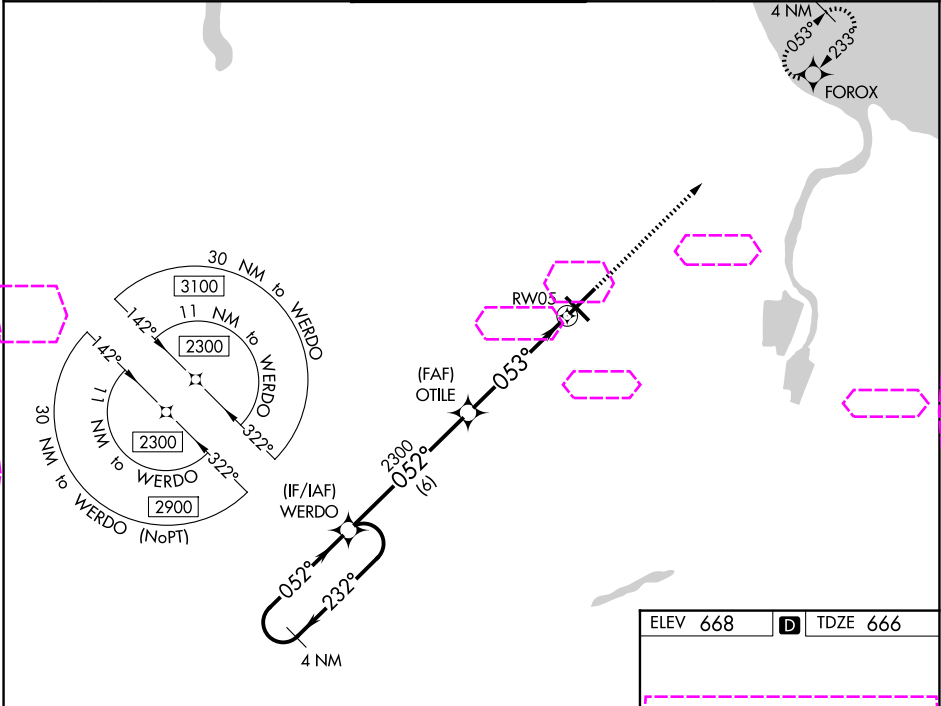
For uncompensated Baro-VNAV systems, LNAV/VNAV NA below -18°C (0°F) or above 54°C (130°F). DME/DME RNP-0.3 NA. For inoperative ALS, increase LNAV/VNAV all Cats visibility to RVR 4500 and LNAV Cats C/D visibility to RVR 6000.  
\*\* RVR 1800 authorized with use of FD or AP or HUD to DA.

MALSR

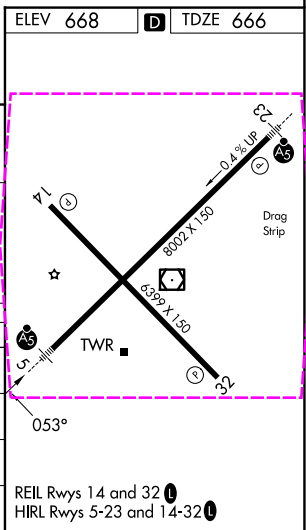


MISSED APPROACH:  
Climb to 2300 direct  
FOROX and hold.

ATIS <b>125.925</b>	GREAT LAKES APP CON* <b>126.45 235.625</b>	SAGINAW TOWER * <b>120.1(CTAF) 257.7</b>	GND CON <b>121.7</b>	CLNC DEL <b>121.85</b>	UNICOM <b>122.95</b>
------------------------	---	---	-------------------------	---------------------------	-------------------------



4 NM Holding Pattern				
WERDO				
OTILE				
* 1.1 NM to RW05				
* LNAV only.				
GP 3.00° TCH 50				
CATEGORY	A	B	C	D
LPV DA**		866/24	200 (200-½)	
LNAV/DA		955/24	289 (300-½)	
LNAV MDA	1080/24	414 (500-½)	1080/40	414 (500-¾)
CIRCLING	1080-1 412 (500-1)	1120-1 452 (500-1)	1240-1½ 572 (600-1½)	1240-2 572 (600-2)



SAGINAW, MICHIGAN  
Amdt 2 01FEB18

43°32'N - 84°05'W

MBS INTL (MBS)  
RNAV (GPS) RWY 5

EC-1, 07 AUG 2025 to 04 SEP 2025

EC-1, 07 AUG 2025 to 04 SEP 2025