

SAGINAW, MICHIGAN

AL-648 (FAA)

22363

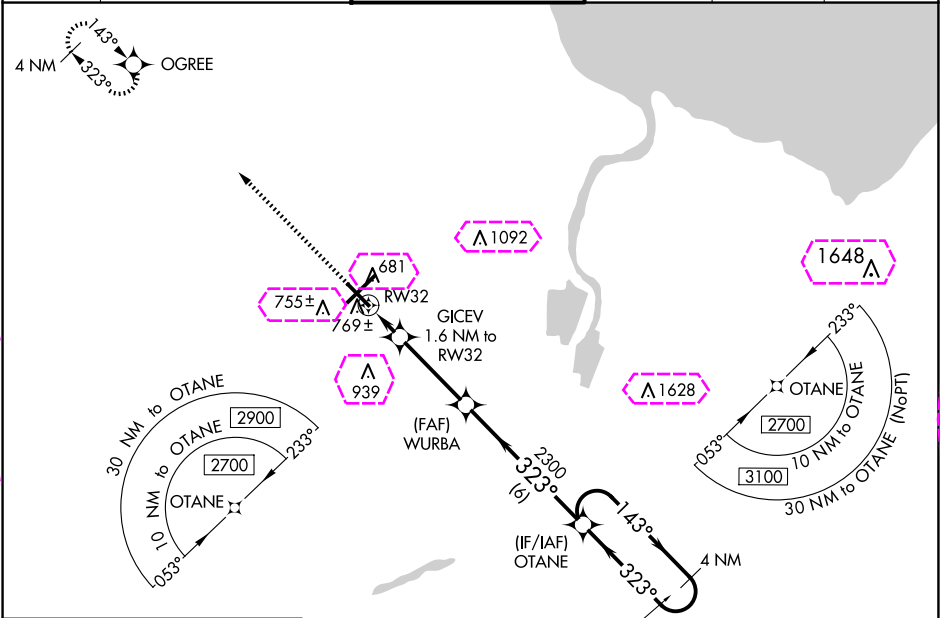
WAAS CH 78011 W32A	APP CRS 323°	Rwy Idg TDZE Apt Elev	6399 665 668
--	------------------------	-----------------------------	---

RNAV (GPS) RWY 32

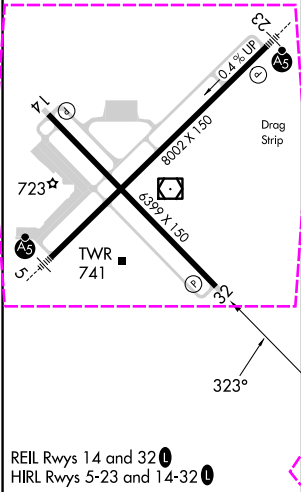
MBS INTL (MBS)

RNP APCH.		MISSED APPROACH: Climb to 2300 direct OGREE and hold.	
▽ For uncompensated Baro-VNAV systems, LNAV/VNAV NA below -18°C or above 54°C.			

ATIS 125.925	GREAT LAKES APP CON ★ 126.45 235.625	SAGINAW TOWER ★ 120.1(CTAF) 257.7	GND CON 121.7	CLNC DEL 121.85	UNICOM 122.95
------------------------	--	---	-------------------------	---------------------------	-------------------------



ELEV 668	D TDZE 665
----------	------------



2300 OGREE		4 NM Holding Pattern		
*LNAV only.		OTANE		
*1 NM to RW32		GICEV 1.6 NM to RW32		
*1220		WURBA 2300		
1 NM		0.6 NM		
3.4 NM		6 NM		
CATEGORY	A	B	C	D
LPV DA	865-¾ 200 (200-¾)			
LNAV/ VNAV DA	950-⅞ 285 (300-⅞)			
LNAV MDA	1020-1 355 (400-1)			
CIRCLING	1080-1 412 (500-1)	1120-1 452 (500-1)	1240-1½ 572 (600-1½)	1240-2 572 (600-2)

SAGINAW, MICHIGAN
Amdt 2A 24MAY18

43°32'N-84°05'W

RNAV (GPS) RWY 32

MBS INTL (MBS)

SAGINAW, MICHIGAN

AL-648 (FAA)

25219

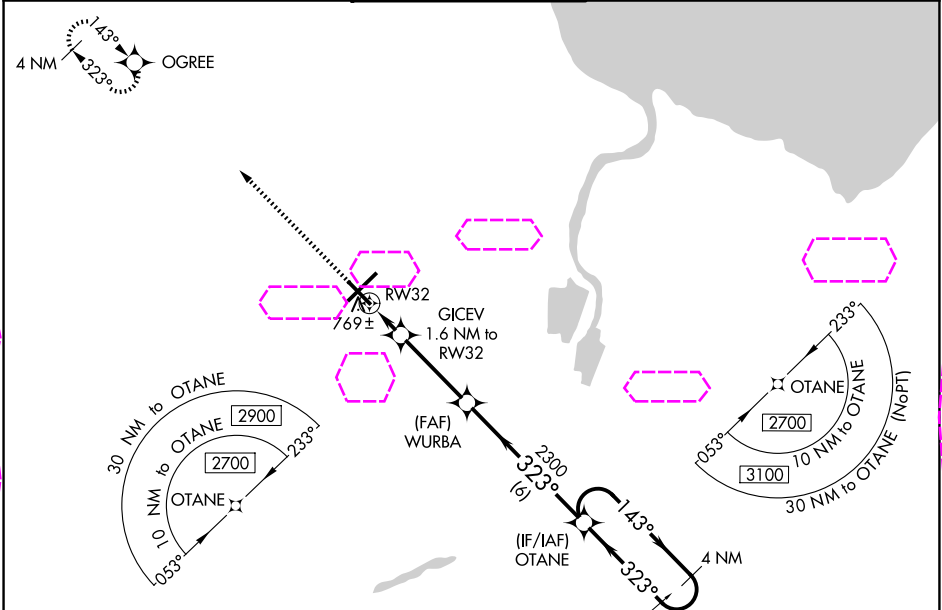
WAAS CH 78011 W32A	APP CRS 323°	Rwy Ldg TDZE Apt Elev	6399 665 668
--	------------------------	-----------------------------	---

RNAV (GPS) RWY 32

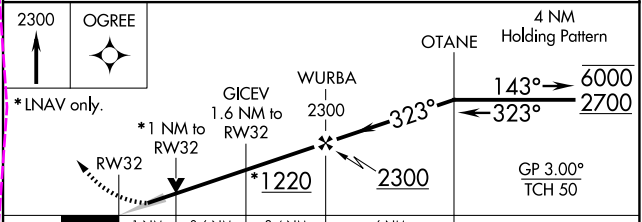
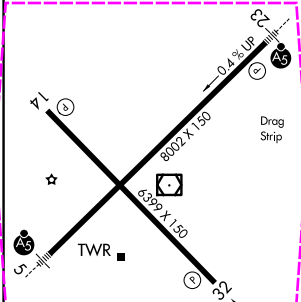
MBS INTL (MBS)

RNP APCH.	MISSED APPROACH: Climb to 2300 direct OGREE and hold.
For uncompensated Baro-VNAV systems, LNAV/VNAV NA below -18°C or above 54°C.	

ATIS 125.925	GREAT LAKES APP CON ★ 126.45 235.625	SAGINAW TOWER ★ 120.1(CTAF) 257.7	GND CON 121.7	CLNC DEL 121.85	UNICOM 122.95
------------------------	--	---	-------------------------	---------------------------	-------------------------



ELEV 668	D	TDZE 665
----------	---	----------



CATEGORY	A	B	C	D
LPV DA		865- $\frac{3}{4}$	200 (200- $\frac{3}{4}$)	
LNAV/VNAV DA		950- $\frac{7}{8}$	285 (300- $\frac{7}{8}$)	
LNAV MDA		1020-1	355 (400-1)	
CIRCLING	1080-1 412 (500-1)	1120-1 452 (500-1)	1240-1½ 572 (600-1½)	1240-2 572 (600-2)

SAGINAW, MICHIGAN
Amdt 2A 24MAY18

43°32'N-84°05'W

RNAV (GPS) RWY 32

MBS INTL (MBS)

EC-1, 07 AUG 2025 to 04 SEP 2025

EC-1, 07 AUG 2025 to 04 SEP 2025