

SAGINAW, MICHIGAN

AL-648 (FAA)


22363

WAAS CH 49010 W23A	APP CRS 233°	Rwy Idg TDZE 661 Apt Elev 668	8002 661 668
--	------------------------	---	---

RNAV (GPS) RWY 23

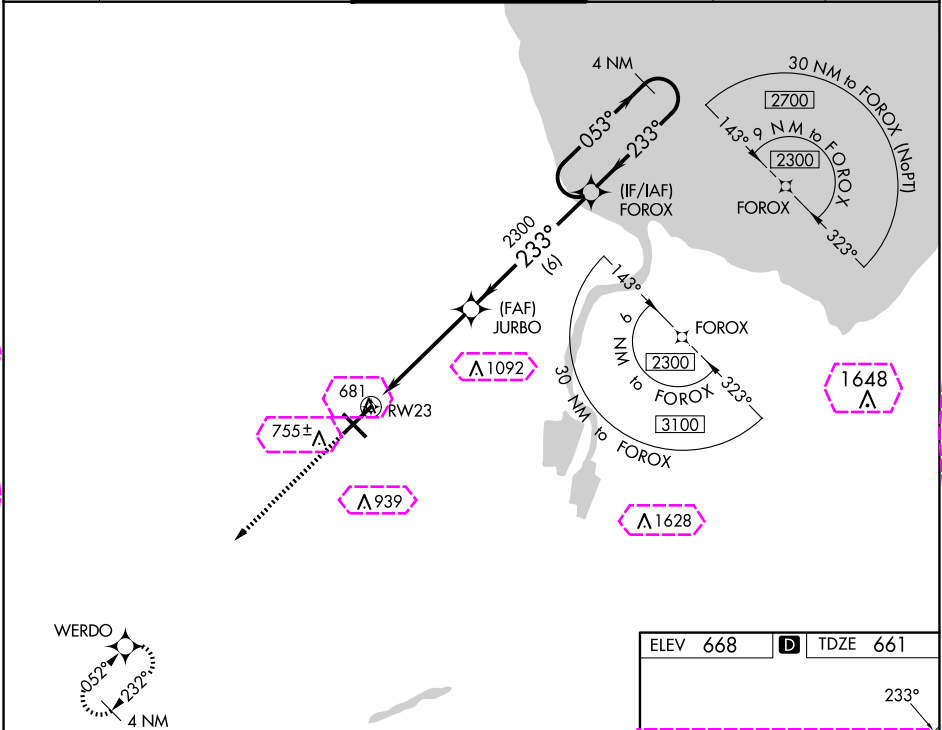
MBS INTL (MBS)

▼ For uncompensated Baro-VNAV systems, LNAV/VNAV NA below -18°C (0°F) or above 54°C (130°F). DME/DME RNP-0.3 NA.
For inoperative ALS, increase LNAV/VNAV all Cats visibility to RVR 4500.
RVR 1800 authorized with use of FD or AP or HUD to DA.

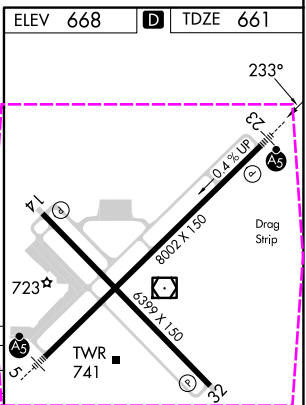
MALS 

MISSED APPROACH: Climb to 2300 direct WERDO and hold.

ATIS 125.925	GREAT LAKES APP CON ★ 126.45 235.625	SAGINAW TOWER ★ 120.1 (CTAF) 257.7	GND CON 121.7	CLNC DEL 121.85	UNICOM 122.95
------------------------	--	--	-------------------------	---------------------------	-------------------------



2300	WERDO	JURBO	FOROX	4 NM Holding Pattern
*LNAV only	*1.1 NM to RW23	2300	233°	053° → 2300
			233°	GP 3.00° TCH 54
	1.1	3.9	6	
CATEGORY	A	B	C	D
LPV DA #		861/24	200 (200-½)	
LNAV/VNAV DA		940/24	279 (300-½)	
LNAV MDA	1060/24	399 (400-½)	1060/35	399 (400-¾)
CIRCLING	1080-1 412 (500-1)	1120-1 452 (500-1)	1240-1½ 572 (600-1½)	1240-2 572 (600-2)



SAGINAW, MICHIGAN


AL-648 (FAA)

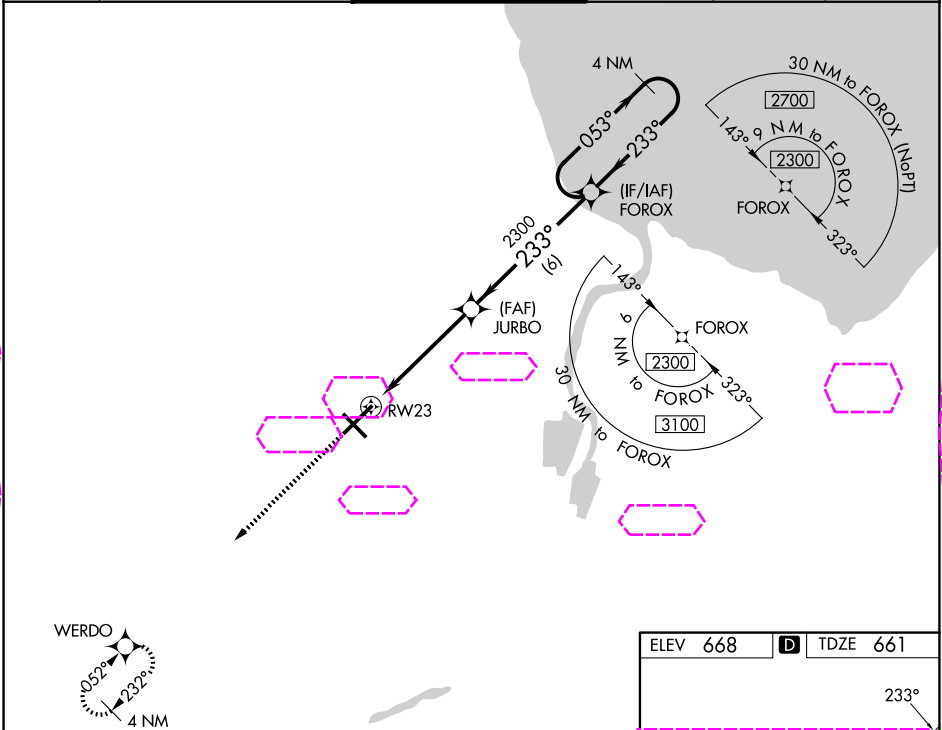
25219

WAAS CH 49010 W23A	APP CRS 233°	Rwy Ldg TDZE 661 Apt Elev 668	8002 661 668
--	------------------------	---	---

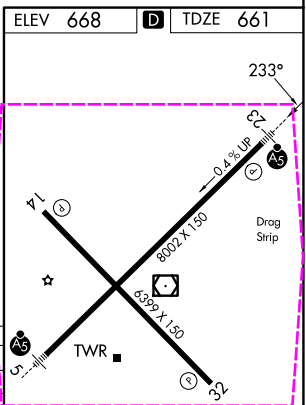
RNAV (GPS) RWY 23

MBS INTL (MBS)

▽	For uncompensated Baro-VNAV systems, LNAV/VNAV NA below -18°C (0°F) or above 54°C (130°F). DME/DME RNP-0.3 NA. For inoperative ALS, increase LNAV/VNAV all Cats visibility to RVR 4500. # RVR 1800 authorized with use of FD or AP or HUD to DA.			MALS R	MISSED APPROACH: Climb to 2300 direct WERDO and hold.	
						
ATIS 125.925	GREAT LAKES APP CON ★ 126.45 235.625		SAGINAW TOWER ★ 120.1 (CTAF) 0 257.7	GND CON 121.7	CLNC DEL 121.85	UNICOM 122.95



2300	WERDO	JURBO	FOROX	4 NM Holding Pattern
*LNAV only	*1.1 NM to RWY 23	2300	233°	053° → 2300 ← 233°
RWY 23		1.1	3.9 NM	6 NM
CATEGORY	A	B	C	D
LPV DA #	861/24		200 (200-½)	
LNAV/VNAV DA	940/24		279 (300-½)	
LNAV MDA	1060/24 399 (400-½)		1060/35 399 (400-¾)	
CIRCLING	1080-1 412 (500-1)	1120-1 452 (500-1)	1240-1½ 572 (600-1½)	1240-2 572 (600-2)



SAGINAW, MICHIGAN
Amdt 2 01FEB18

43°32'N - 84°05'W

RNAV (GPS) RWY 23

MBS INTL (MBS)

EC-1, 07 AUG 2025 to 04 SEP 2025

EC-1, 07 AUG 2025 to 04 SEP 2025