

SAGINAW, MICHIGAN

AL-648 (FAA)

22363

WAAS CH 69211 W14A	APP CRS 143°	Rwy Idg TDZE Apt Elev	6399 668 668
--	------------------------	-----------------------------	---

RNAV (GPS) RWY 14

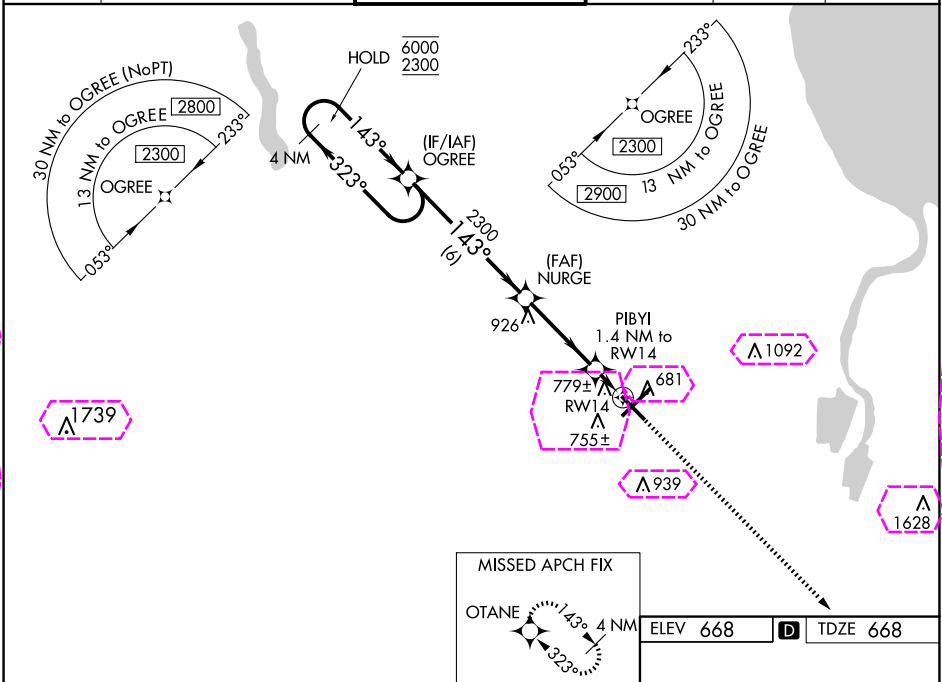
MBS INTL (MBS)

RNP APCH.

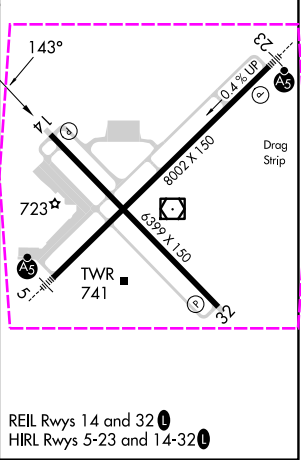
⚠ For uncompensated Baro-VNAV systems, LNAV/VNAV NA below -18°C or above 54°C.

MISSED APPROACH: Climb to 2700 direct OTANE and hold.

ATIS 125.925	GREAT LAKES APP CON ★ 126.45 235.625	SAGINAW TOWER ★ 120.1 (CTAF) 257.7	GND CON 121.7	CLNC DEL 121.85	UNICOM 122.95
------------------------	--	--	-------------------------	---------------------------	-------------------------



4 NM Holding Pattern				
OGREE NURGE PIBYI 1.4 NM to RW14				
GP 3.00° TCH 45				
CATEGORY A B C D				
LPV DA 868-¾ 200 (200-¾)				
LNAV/VNAV DA 960-⅞ 292 (300-⅞)				
LNAV MDA 1040-1 372 (400-1)				
CIRCLING 1080-1 1120-1 1240-1½ 1240-2				
412 (500-1) 452 (500-1) 572 (600-1½) 572 (600-2)				



SAGINAW, MICHIGAN
Amdt 2A 24MAY18

43°32'N-84°05'W

RNAV (GPS) RWY 14

MBS INTL (MBS)

SAGINAW, MICHIGAN

AL-648 (FAA)

25219

WAAS CH 69211 W14A	APP CRS 143°	Rwy Ldg TDZE Apt Elev	6399 668 668
--	------------------------	-----------------------------	---

RNAV (GPS) RWY 14

MBS INTL (MBS)

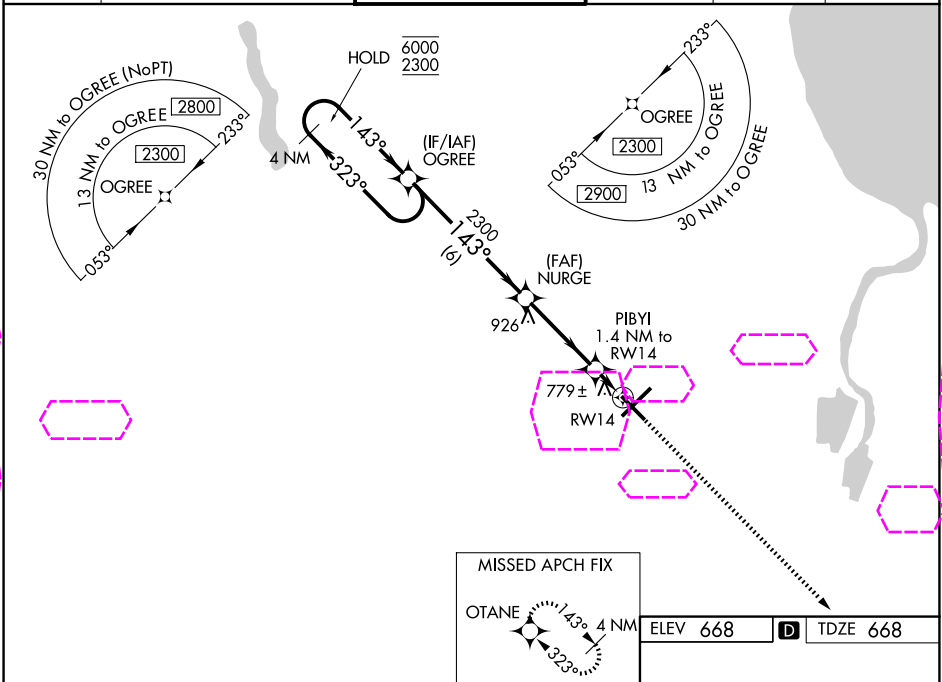
RNP APCH.

▼

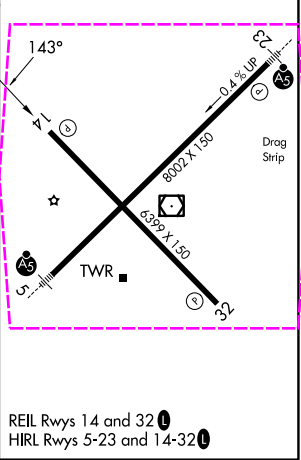
For uncompensated Baro-VNAV systems, LNAV/VNAV NA below -18°C or above 54°C.

MISSED APPROACH: Climb to 2700 direct OTANE and hold.

ATIS 125.925	GREAT LAKES APP CON ★ 126.45 235.625	SAGINAW TOWER ★ 120.1 (CTAF) 257.7	GND CON 121.7	CLNC DEL 121.85	UNICOM 122.95
------------------------	--	--	-------------------------	---------------------------	-------------------------



4 NM Holding Pattern				
OGREE NURGE PIBYI 1.4 NM to RW14				
6000 2300 GP 3.00° TCH 45				
6 NM 3.6 NM 1.4 NM				
CATEGORY	A	B	C	D
LPV DA		868-¾	200 (200-¾)	
LNAV/VNAV DA		960-⅞	292 (300-⅞)	
LNAV MDA		1040-1	372 (400-1)	
CIRCLING	1080-1 412 (500-1)	1120-1 452 (500-1)	1240-1½ 572 (600-1½)	1240-2 572 (600-2)



SAGINAW, MICHIGAN
Amdt 2A 24MAY18

43°32'N-84°05'W

RNAV (GPS) RWY 14

MBS INTL (MBS)

EC-1, 07 AUG 2025 to 04 SEP 2025

EC-1, 07 AUG 2025 to 04 SEP 2025