

EC-1, 10 JUL 2025 to 07 AUG 2025

SAGINAW, MICHIGAN



AL-648 (FAA)

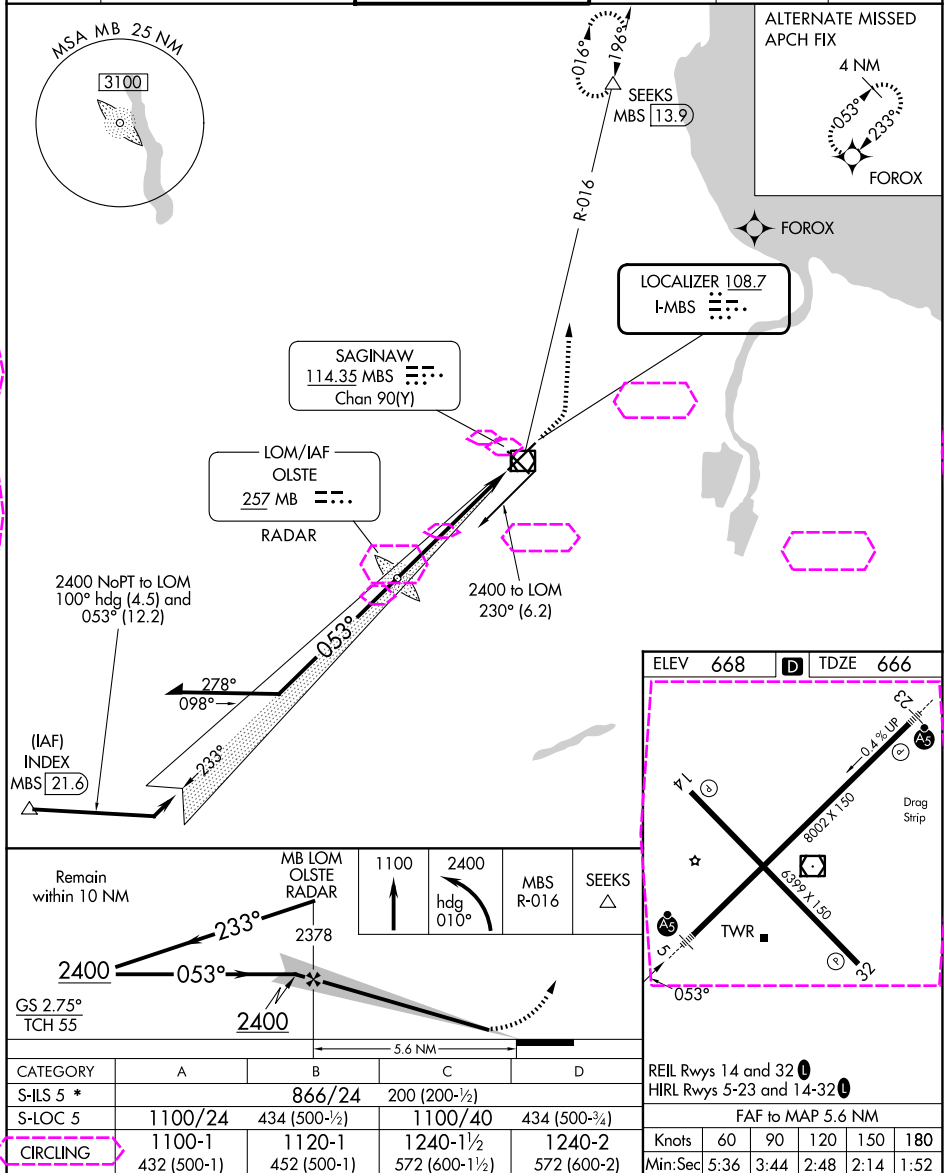
25219

LOC I-MBS <b>108.7</b>	APP CRS <b>053°</b>	Rwy Ldg TDZE <b>666</b> Apt Elev <b>668</b>
---------------------------	------------------------	---

# ILS or LOC RWY 5

MBS INTL (MBS)

DME required.			MISSED APPROACH: Climb to 1100 then climbing left turn to 2400 on heading 010° and MBS VOR/DME R-016 to SEEKS/MBS 13.9 DME and hold.			
	* RVR 1800 authorized with use of FD or AP or HUD to DA.					
ATIS 125.925	GREAT LAKES APP CON ★ 126.45 235.625	SAGINAW TOWER ★ 120.1 (CTAF) 0 257.7		GND CON 121.7	CLNC DEL 121.85	UNICOM 122.95



SAGINAW, MICHIGAN  
Amdt 11B 31OCT24

43°32'N-84°05'W

MBS INTL (MBS)  
ILS or LOC RWY 5