

SAGINAW, MICHIGAN

AL-648 (FAA)

24249

LOC/DME I-TQR 108.7 Chan 24	APP CRS 233°	Rwy Idg TDZE Apt Elev 8002 661 668
--	------------------------	--

ILS or LOC RWY 23

MBS INTL (MBS)

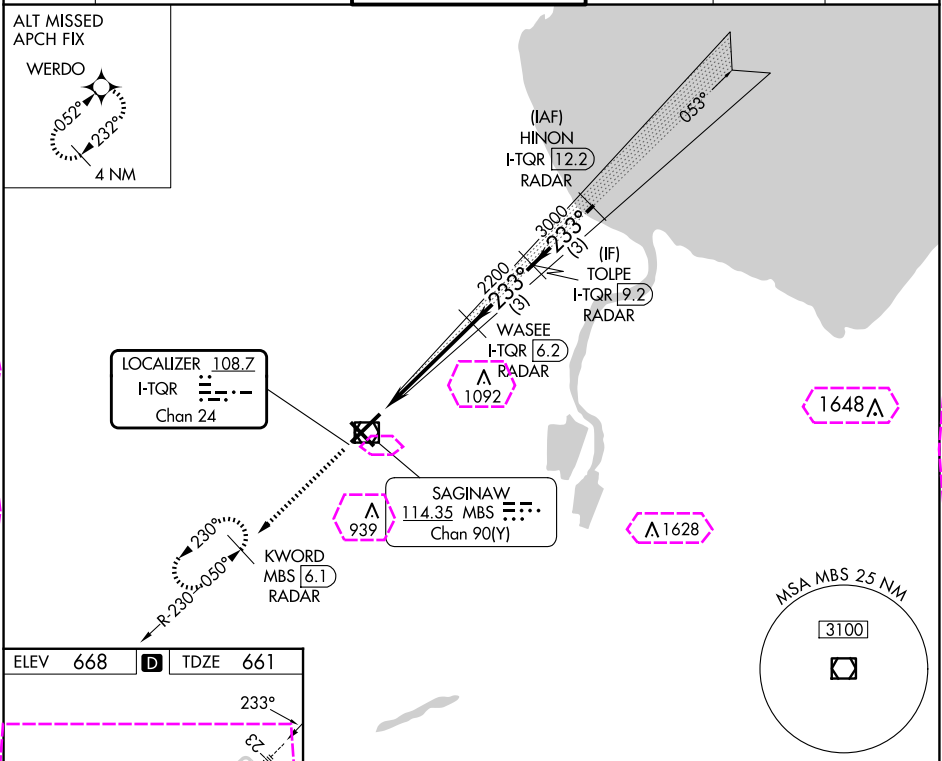
DME or RADAR required. RADAR required for procedure entry.
*RVR 1800 authorized with use of FD or AP or HUD to DA.



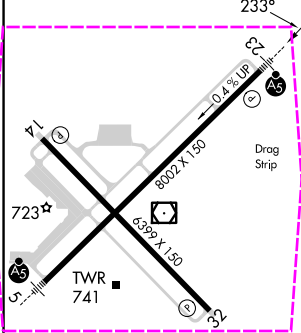
MISSED APPROACH: Climb to 2500 on MBS VOR/DME R-230 to KWORD/MBS 6.1 DME/RADAR and hold.

ATIS 125.925	GREAT LAKES APP CON ★ 126.45 235.625	SAGINAW TOWER ★ 120.1(CTAF) 257.7	GND CON 121.7	CLNC DEL 121.85	UNICOM 122.95
------------------------	--	---	-------------------------	---------------------------	-------------------------

ALT MISSED
APCH FIX
WERDO
052°
232°
4 NM



ELEV 668	D	TDZE 661
----------	---	----------



REIL Rwy 14 and 32	HIRL Rwy 5-23 and 14-32
FAF to MAP 4.7 NM	
Knots	60 90 120 150 180
Min:Sec	4:42 3:08 2:21 1:53 1:34

2500	MBS R-230	KWORD MBS 6.1 RADAR	WASEE I-TQR 6.2 RADAR	TOLPE I-TQR 9.2 RADAR
I-TQR 1.5	I-TQR 2.6	2170	233°	3000
GS 3.00° TCH 55				
-1.1 NM 3.6 NM 3 NM				
CATEGORY	A	B	C	D
S-ILS 23 *	861/24 200 (200-1/2)			
S-LOC 23	1060/24 399 (400-1/2)		1060/35 399 (400-5/8)	
CIRCLING	1080-1 412 (500-1)	1120-1 452 (500-1)	1240-1 572 (600-1/2)	1240-2 572 (600-2)

SAGINAW, MICHIGAN
Amdt 5A 25JAN24

43°32'N-84°05'W

ILS or LOC RWY 23

MBS INTL (MBS)

EC-1, 10 JUL 2025 to 07 AUG 2025

EC-1, 10 JUL 2025 to 07 AUG 2025

SAGINAW, MICHIGAN

AL-648 (FAA)

25219

LOC/DME I-TQR 108.7 Chan 24	APP CRS 233°	Rwy Ldg TDZE 8002 661 Apt Elev 668
--	------------------------	--

ILS or LOC RWY 23
MBS INTL (MBS)

DME or RADAR required. RADAR required for procedure entry.	MALSR	MISSED APPROACH: Climb to 2500 on MBS VOR/DME R-230 to KWORD/MBS 6.1 DME/RADAR and hold.
*RVR 1800 authorized with use of FD or AP or HUD to DA		

ATIS 125.925	GREAT LAKES APP CON * 126.45 235.625	SAGINAW TOWER * 120.1(CTAF) 257.7	GND CON 121.7	CLNC DEL 121.85	UNICOM 122.95
------------------------	--	---	-------------------------	---------------------------	-------------------------

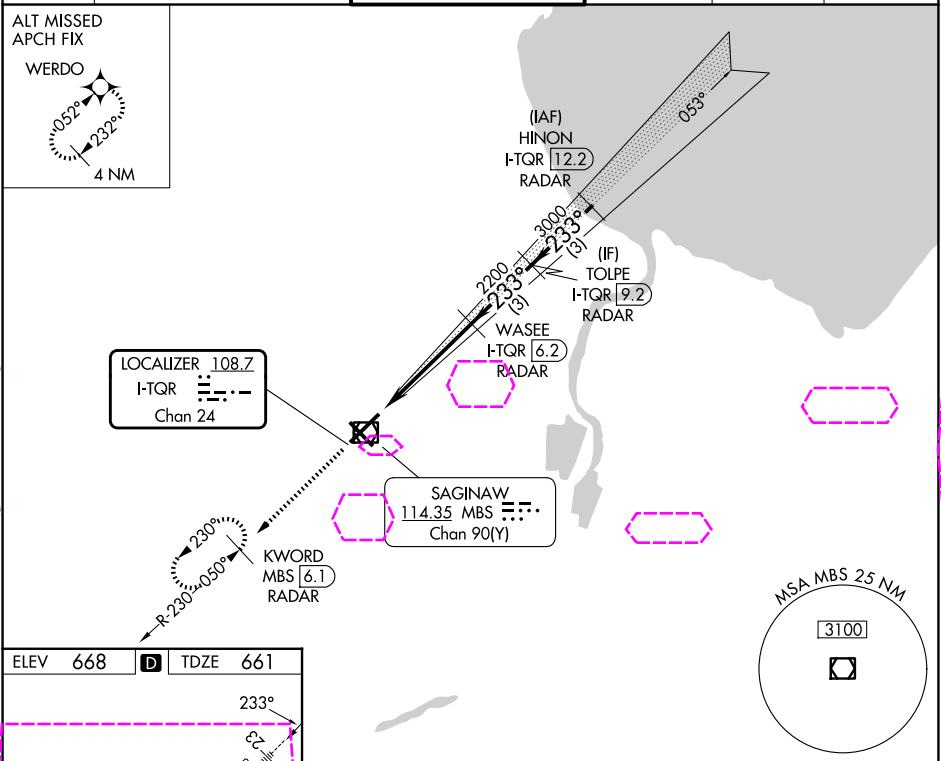


Diagram of Runway 23 showing dimensions and navigation aids:

- Runway dimensions: 8002 x 150 (main) and 5399 x 150 (extension).
- Slope: 0.4% Up.
- Navigation Aids: TWR (Tower), A5 (VORTAC), and S2 (VORTAC).
- Other symbols: A star symbol and a square symbol.

REIL Rwys 14 and 32 (1)					
HIRL Rwys 5-23 and 14-32 (1)					
FAF to MAP 4.7 NM					
Knots	60	90	120	150	180
Min:Sec	4:42	3:08	2:21	1:53	1:34

2500 ↑ MBS R-230	KWORD MBS [6.1] RADAR		WASEE I-TQR [6.2] RADAR	TOLPE I-TQR [9.2] RADAR
---------------------------	------------------------------------	--	--------------------------------------	--------------------------------------

Profile view diagram of Runway 23 showing elevation, distance, and glide path:

- Runway elevation: 2500.
- Distance markers: 1.1 NM, 3.6 NM, 3 NM.
- Elevation markers: 2170, 2200, 3000.
- Glide path: 233°.
- GS 3.00° TCH 55.

CATEGORY	A	B	C	D
S-ILS 23 *	861/24 200 (200-½)			
S-LOC 23	1060/24 399 (400-½)	1060/35 399 (400-¾)		
CIRCUING	1080-1 412 (500-1)	1120-1 452 (500-1)	1240-1½ 572 (600-1½)	1240-2 572 (600-2)

EC-1, 07 AUG 2025 to 04 SEP 2025

EC-1, 07 AUG 2025 to 04 SEP 2025