

MODESTO, CALIFORNIA

AL-643 (FAA)

21168

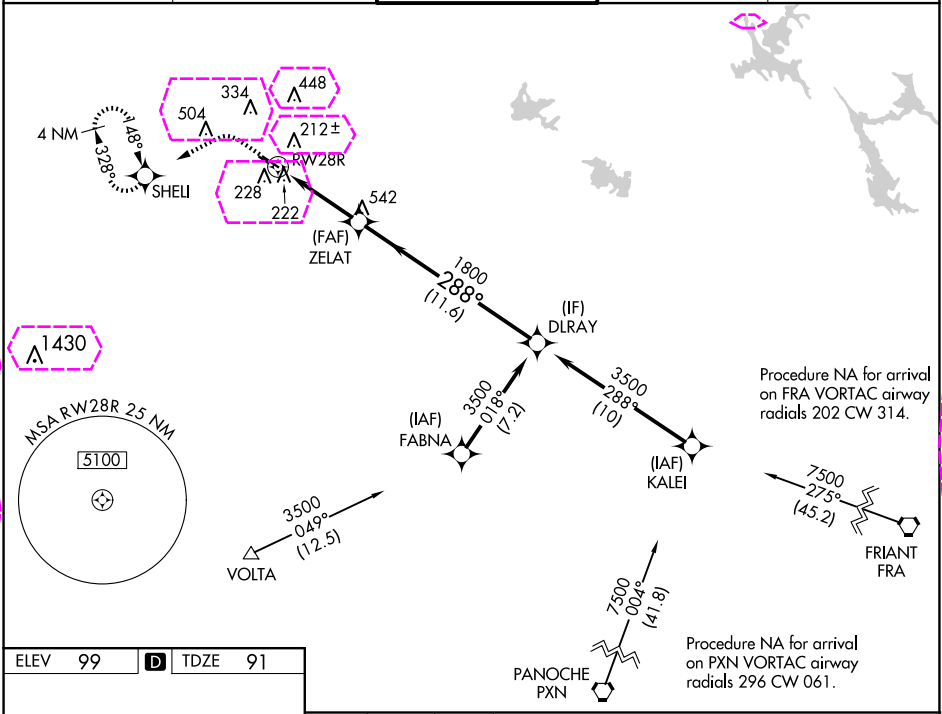
WAAS CH 70609 W28A	APP CRS 288°	Rwy Idg 5904 91 Apt Elev 99
----------------------------------------	------------------------	--------------------------------------------------------------

RNAV (GPS) RWY 28R

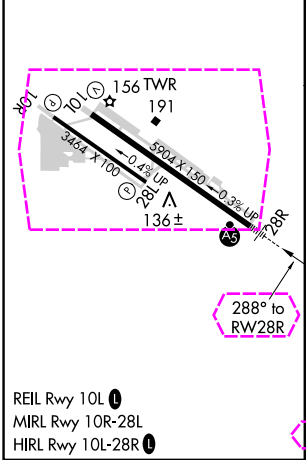
MODESTO CITY-COUNTY-HARRY SHAM FLD (MOD)

RNP APCH.	MALSR	MISSED APPROACH: Climb to 500 then climbing left turn to 3000 direct SHELI and hold, continue climb-in-hold to 3000.
-----------	-------	----------------------------------------------------------------------------------------------------------------------

ATIS 127.7	NORCAL APP CON 120.95 269.45	MODESTO TOWER ★ 125.3 (CTAF) 0 257.8	GND CON 121.7	UNICOM 122.95
----------------------	----------------------------------------	------------------------------------------------	-------------------------	-------------------------



ELEV 99	D TDZE 91
---------	-----------



500

3000

SHELI

*LNAV only

*2 NM to RWY28R

ZELAT

RWY28R

DLRAY

3500

GP 3.00°

TCH 53

2 NM

3.2 NM

11.6 NM

1800

288°

1800

CATEGORY	A	B	C	D
LPV DA	291-½ 200 (200-½)			
LNAV/VNAV DA	393-½ 302 (300-½)			
LNAV MDA	480-½ 389 (400-½)	480-⅝ 389 (400-⅝)		
CIRCLING	540-1 441 (500-1)	600-1 501 (600-1)	700-1¾ 601 (700-1¾)	820-2¼ 721 (800-2¼)

MODESTO, CALIFORNIA
Amdt 1 21MAY20

MODESTO CITY-COUNTY-HARRY SHAM FLD (MOD)
37°38'N-120°57'W
RNAV (GPS) RWY 28R

MODESTO, CALIFORNIA

AL-643 (FAA)

25219

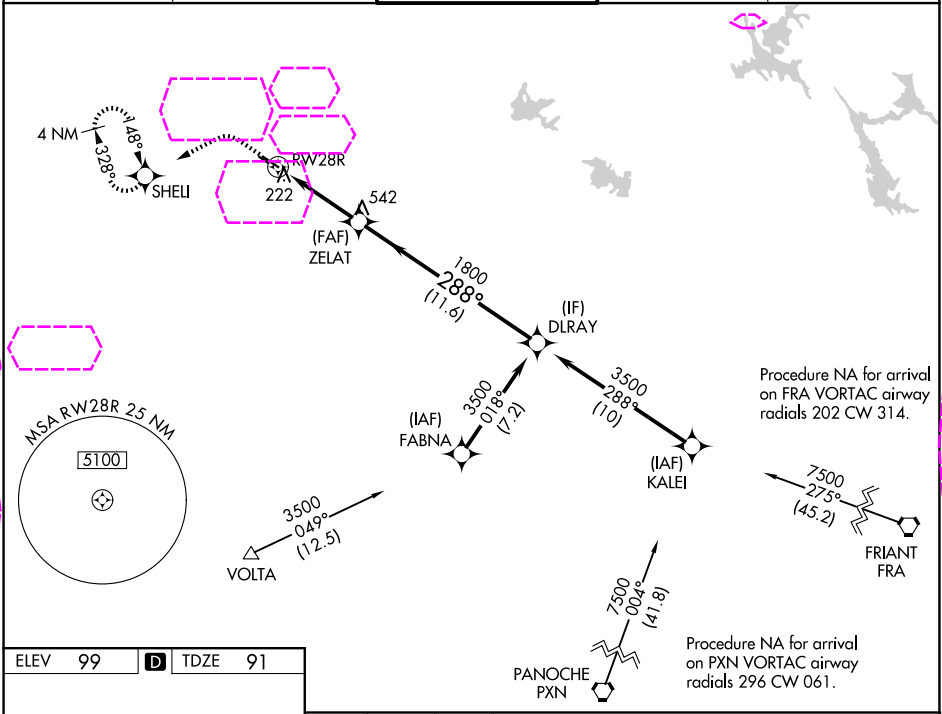
WAAS CH 70609 W28A	APP CRS 288°	Rwy Ldg 5904 TDZE 91 Apt Elev 99
----------------------------------------	------------------------	----------------------------------------------------------------------

RNAV (GPS) RWY 28R

MODESTO CITY-COUNTY-HARRY SHAM FLD (MOD)

RNP APCH.	MALSR	MISSED APPROACH: Climb to 500 then climbing left turn to 3000 direct SHELI and hold, continue climb-in-hold to 3000.
For uncompensated Baro-VNAV systems, LNAV/VNAV NA below -1°C or above 54°C. For inoperative ALS, increase LNAV/VNAV all Cnts visibility to 7/5 SM.		

ATIS 127.7	NORCAL APP CON 120.95 269.45	MODESTO TOWER ★ 125.3 (CTAF) 0 257.8	GND CON 121.7	UNICOM 122.95
----------------------	----------------------------------------	------------------------------------------------	-------------------------	-------------------------



ELEV 99	D	TDZE 91
---------	---	---------

*LNAV only				
CATEGORY	A	B	C	D
LPV DA	291-1/2		200 (200-1/2)	
LNAV/VNAV DA	393-1/2		302 (300-1/2)	
LNAV MDA	480-1/2 389 (400-1/2)		480-5/8 389 (400-5/8)	
CIRCLING	540-1 441 (500-1)	600-1 501 (600-1)	700-1 3/4 601 (700-1 3/4)	820-2 1/4 721 (800-2 1/4)

MODESTO, CALIFORNIA
Amdt 1 21MAY20

MODESTO CITY-COUNTY-HARRY SHAM FLD (MOD)
37°38'N-120°57'W
RNAV (GPS) RWY 28R