

ABERDEEN, SOUTH DAKOTA

AL-642 (FAA)

21336

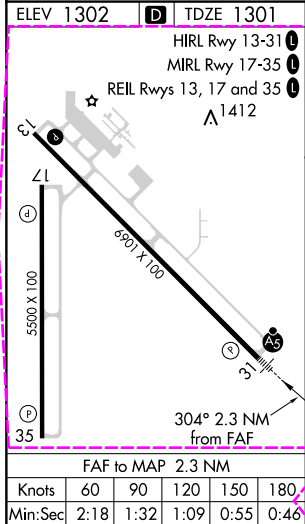
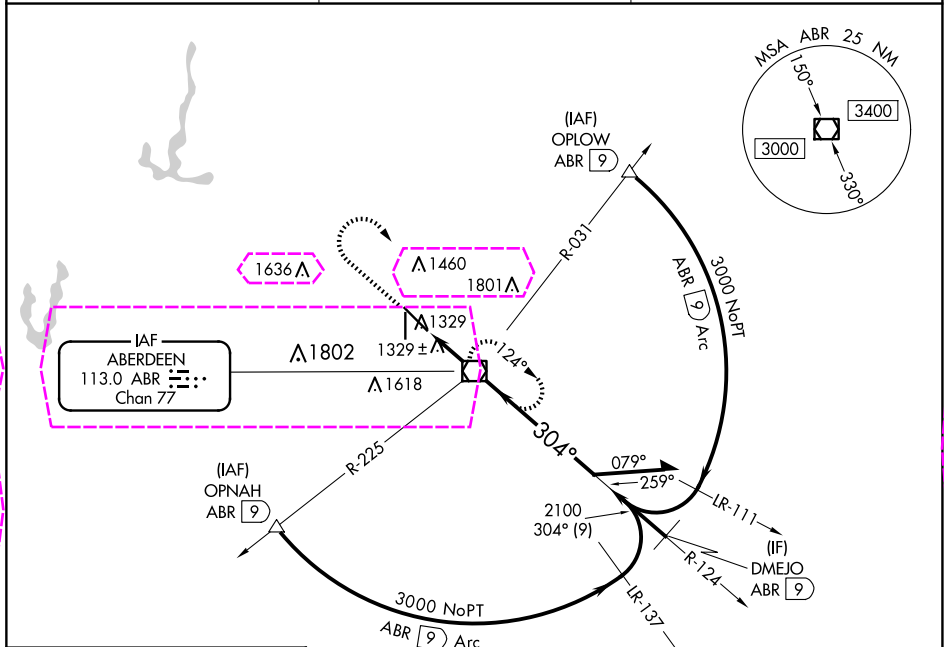
VOR/DME ABR <b>113.0</b> Chan <b>77</b>	APP CRS <b>304°</b>	Rwy Idg TDZE Apt Elev <b>6901</b> <b>1301</b> <b>1302</b>
---	------------------------	--

# VOR RWY 31

ABERDEEN RGNL (ABR)

<b>V</b> <b>A</b> For inop ALS, increase S-31 Cat C visibility to 1 SM.	MALSR 	MISSED APPROACH: Climb to 3000 then right turn direct ABR VOR/DME and hold.
---	-----------	---

ASOS <b>125.875</b>	MINNEAPOLIS CENTER <b>120.6 371.9</b>	UNICOM <b>122.7 (CTAF)</b>
------------------------	--	-------------------------------



				Remain within 10 NM			
CATEGORY	A		B		C		D
S-31	1660- $\frac{1}{2}$		359 (400- $\frac{1}{2}$ )		1660- $\frac{3}{4}$ 359 (400- $\frac{3}{4}$ )		NA
<b>CIRCLING</b>	1760-1 458 (500-1)		1860-1 558 (600-1)		1960-1 $\frac{3}{4}$ 658 (700-1 $\frac{3}{4}$ )		NA

ABERDEEN, SOUTH DAKOTA  
Amdt 21B 02DEC21

45°27'N-98°25'W

ABERDEEN RGNL (ABR)  
**VOR RWY 31**

ABERDEEN, SOUTH DAKOTA

AL-642 (FAA)

25219

VOR/DME ABR	APP CRS	Rwy Ldg	6901
113.0	304°	TDZE	1301
Chan 77		Apt Elev	1302

# VOR RWY 31

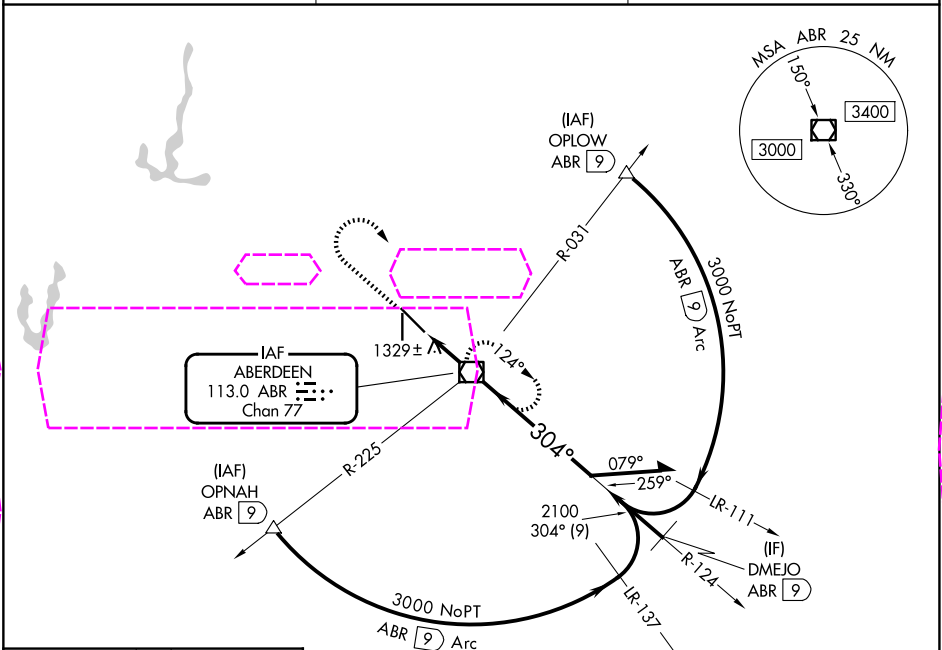
ABERDEEN RGNL (ABR)

**⚠** For inop ALS, increase S-31 Cat C visibility to 1 SM.

**MALSR**

**MISSED APPROACH:** Climb to 3000 then right turn direct ABR VOR/DME and hold.

ASOS <b>125.875</b>	MINNEAPOLIS CENTER <b>120.6 371.9</b>	UNICOM <b>122.7 (CTAF)</b>
------------------------	--	-------------------------------



ELEV 1302 **D** TDZE 1301

REIL Rwy 13, 17 and 35 **1**

HIRL Rwy 13-31 **1**

MIRL Rwy 17-35 **1**

31

5500 X 100

35

304°

FAF to MAP 2.3 NM

Knots	60	90	120	150	180
Min:Sec	2:18	1:32	1:09	0:55	0:46

3000

ABR

ABR VOR/DME

Remain within 10 NM

124°

304°

3000

2100

3.07°

TCH 67

0.9 NM

1.3 NM

CATEGORY	A	B	C	D
S-31	1660-½ 359 (400-½)	1660-¾ 359 (400-¾)	1660-1¾ 658 (700-1¾)	NA
CIRCLING	1760-1 458 (500-1)	1860-1 558 (600-1)	1960-1¾ 658 (700-1¾)	NA

ABERDEEN, SOUTH DAKOTA  
Amdt 21B 02DEC21

45°27'N-98°25'W

ABERDEEN RGNL (ABR)  
**VOR RWY 31**

NC-1, 07 AUG 2025 to 04 SEP 2025

NC-1, 07 AUG 2025 to 04 SEP 2025