

ABERDEEN, SOUTH DAKOTA

AL-642 (FAA)

21280

VOR/DME ABR <b>113.0</b> Chan <b>77</b>	APP CRS <b>125°</b>	Rwy Idg TDZE Apt Elev <b>6901</b> <b>1302</b> <b>1302</b>
---	------------------------	--

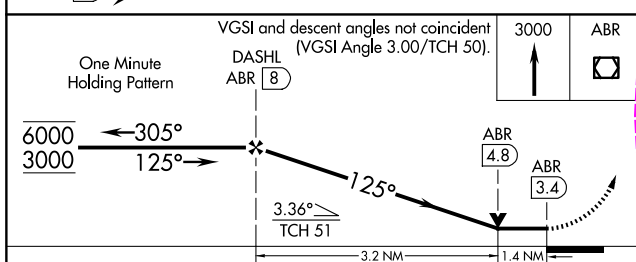
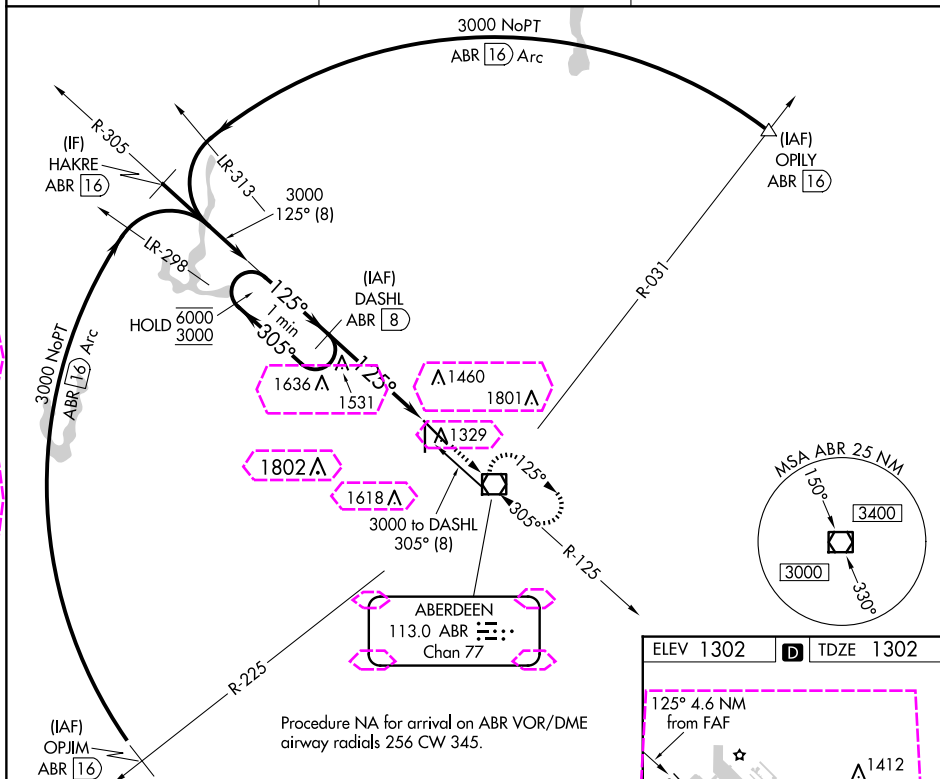
**VOR RWY 13**  
ABERDEEN RGNL(ABR)

DME required.

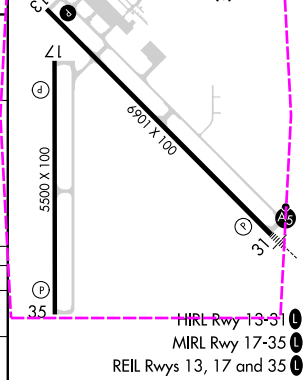


MISSED APPROACH: Climb to 3000 direct ABR VOR/DME and hold.

ASOS <b>125.875</b>	MINNEAPOLIS CENTER <b>120.6 371.9</b>	UNICOM <b>122.7 (CTAF)</b>
------------------------	--	-------------------------------



CATEGORY	A	B	C	D
S-13	1800-1 498 (500-1)	1800-1 498 (500-1)	1800-1 498 (500-1)	1800-1 498 (500-1)
CIRCLING	1800-1 498 (500-1)	1860-1 558 (600-1)	1960-1 658 (700-1)	2160-2 858 (900-2)



ABERDEEN, SOUTH DAKOTA  
Amdt 13B 28FEB19

45°27'N-98°25'W

ABERDEEN RGNL(ABR)  
**VOR RWY 13**

NC-1, 10 JUL 2025 to 07 AUG 2025

NC-1, 10 JUL 2025 to 07 AUG 2025

ABERDEEN, SOUTH DAKOTA

AL-642 (FAA)

25219

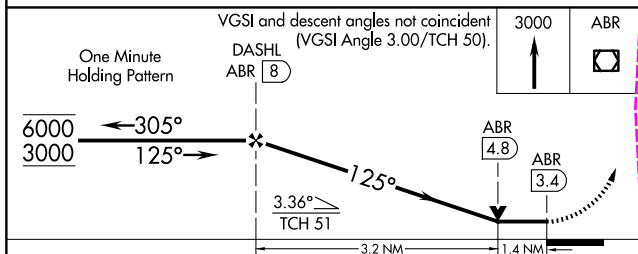
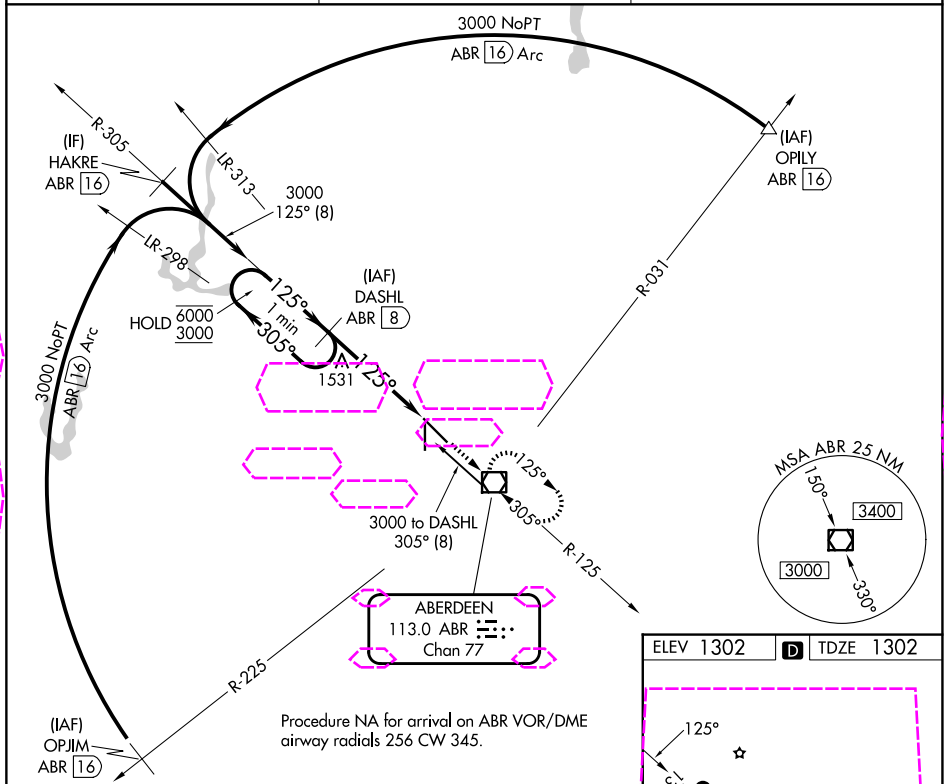
VOR/DME ABR <b>113.0</b> Chan <b>77</b>	APP CRS <b>125°</b>	Rwy Ldg TDZE Apt Elev <b>6901</b> <b>1302</b> <b>1302</b>
---	------------------------	--

# VOR RWY 13

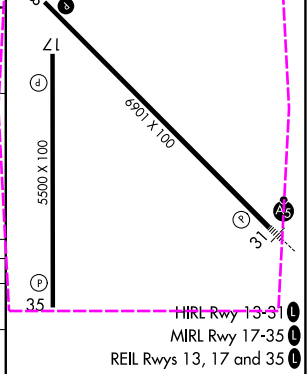
ABERDEEN RGNL(ABR)

DME required. ▼ ▲	MISSED APPROACH: Climb to 3000 direct ABR VOR/DME and hold.
-------------------------	---

ASOS <b>125.875</b>	MINNEAPOLIS CENTER <b>120.6 371.9</b>	UNICOM <b>122.7 (CTAF)</b>
------------------------	--	-------------------------------



CATEGORY	A	B	C	D
S-13	1800-1	498 (500-1)	1800-1 $\frac{3}{8}$	498 (500-1 $\frac{1}{8}$ )
CIRCLING	1800-1	1860-1	1960-1 $\frac{3}{4}$	2160-2 $\frac{3}{4}$
	498 (500-1)	558 (600-1)	658 (700-1 $\frac{3}{4}$ )	858 (900-2 $\frac{3}{4}$ )



ABERDEEN, SOUTH DAKOTA  
Amdt 13B 28FEB19

45°27'N-98°25'W

ABERDEEN RGNL(ABR)  
**VOR RWY 13**

NC-1, 07 AUG 2025 to 04 SEP 2025

NC-1, 07 AUG 2025 to 04 SEP 2025