

ABERDEEN, SOUTH DAKOTA

AL-642 (FAA)

24025

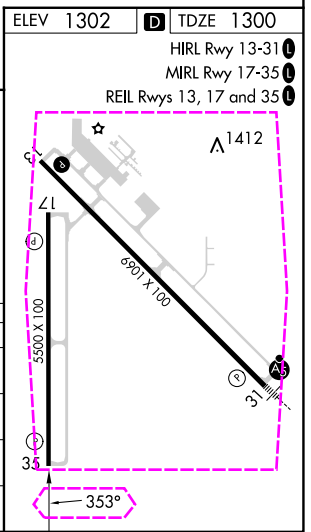
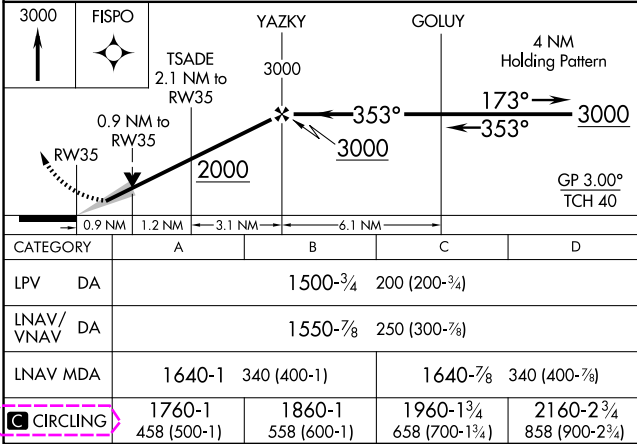
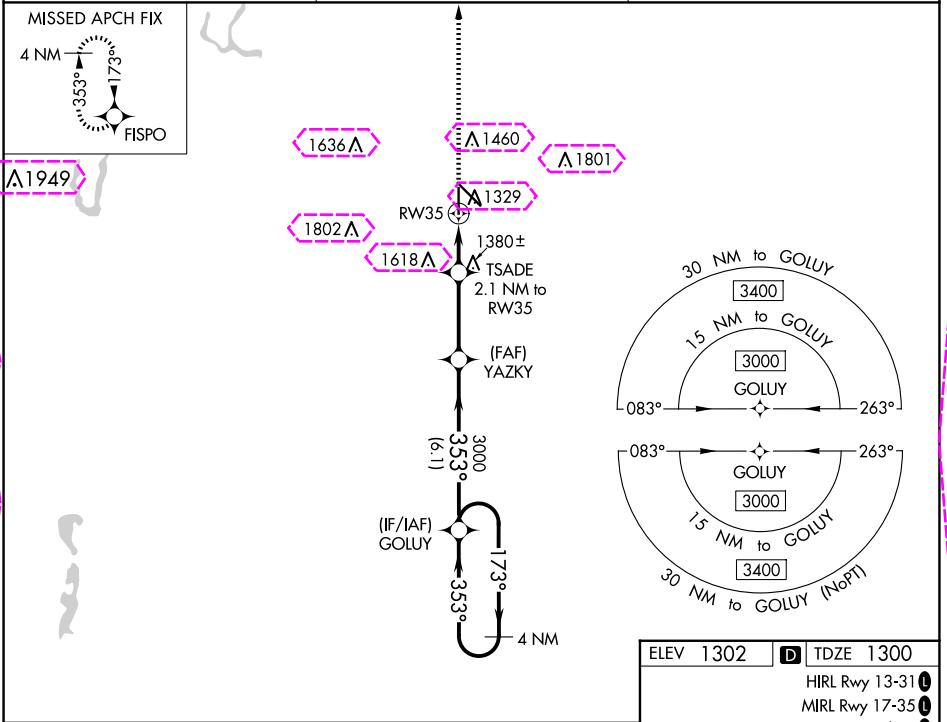
WAAS CH 65800 W35A	APP CRS 353°	Rwy Idg TDZE 1300 Apt Elev 1302
--	------------------------	---

RNAV (GPS) RWY 35

ABERDEEN RGNL (ABR)

RNP APCH - GPS.	MISSED APPROACH: Climb to 3000 direct FISPO and hold.
▼ For uncompensated Baro-VNAV systems, LNAV/VNAV ▲ NA below -22°C or above 54°C.	

ASOS 125.875	MINNEAPOLIS CENTER 120.6 371.9	UNICOM 122.7 (CTAF)
------------------------	--	-------------------------------



ABERDEEN, SOUTH DAKOTA

Amdt 1A 25JAN24

45°27'N-98°25'W

RNAV (GPS) RWY 35

ABERDEEN RGNL (ABR)

ABERDEEN, SOUTH DAKOTA

AL-642 (FAA)

25219

WAAS CH 65800 W35A	APP CRS 353°	Rwy Ldg TDZE 1300 Apt Elev 1302
--	------------------------	---

RNAV (GPS) RWY 35

ABERDEEN RGNL (ABR)

RNP APCH - GPS.	MISSED APPROACH: Climb to 3000 direct FISPO and hold.
▼ For uncompensated Baro-VNAV systems, LNAV/VNAV ▲ NA below -22°C or above 54°C.	

ASOS 125.875	MINNEAPOLIS CENTER 120.6 371.9	UNICOM 122.7 (CTAF)
------------------------	--	-------------------------------

