

ABERDEEN, SOUTH DAKOTA

AL-642 (FAA)

24025

WAAS CH 42914 W31A	APP CRS 308°	Rwy Idg 6901 TDZE 1301 Apt Elev 1302
--	------------------------	---

RNAV (GPS) RWY 31

ABERDEEN RGNL (ABR)

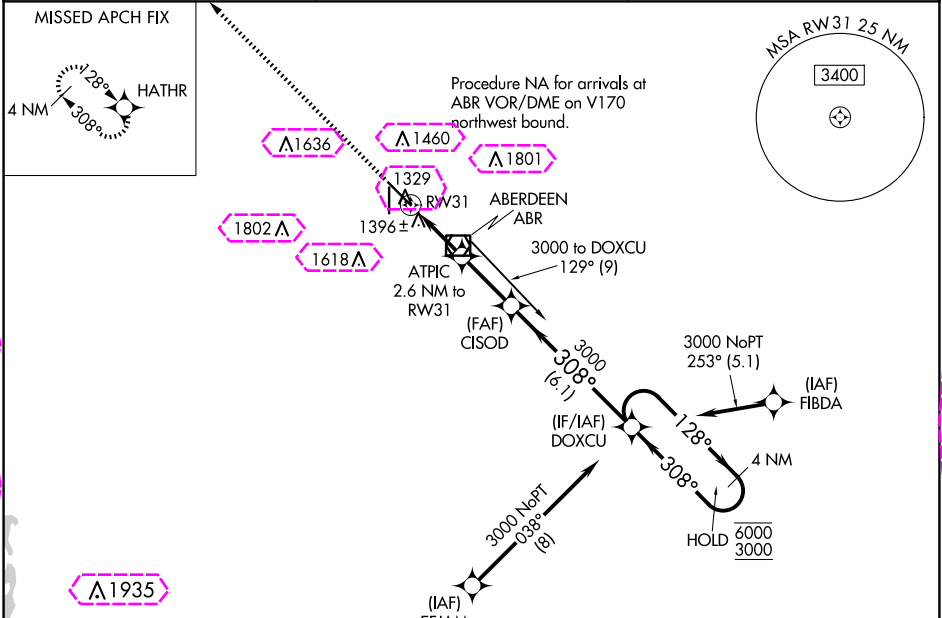
RNP APCH - GPS.

For uncompensated Baro-VNAV systems, LNAV/VNAV NA below -17°C or above 54°C. For inop ALS, increase LNAV/VNAV visibility all Cats to ¾ SM and LNAV visibility all Cats to 1 SM.

MALSR

MISSED APPROACH: Climb to 3000 direct HATHR and hold.

ASOS 125.875	MINNEAPOLIS CENTER 120.6 371.9	UNICOM 122.7 (CTAF)
------------------------	--	-------------------------------



3000 HATHR

VGSI and RNAV glidepath not coincident (VGSI Angle 3.00/TCH 67).

CISOD DOXCU

4 NM Holding Pattern

ATPIC 2.6 NM to RW31

3000

128°

308°

6000 3000

GP 3.00° TCH 52

0.9 NM to RW31

0.9 NM

1.7 NM

2.5 NM

6.1 NM

2180

308°

3000

CATEGORY	A	B	C	D
LPV DA	1501-½ 200 (200-½)			
LNAV/VNAV DA	1599-½ 298 (300-½)			
LNAV MDA	1660-½ 359 (400-½)	1660-⅝ 359 (400-⅝)		
CIRCLING	1760-1 458 (500-1)	1860-1 558 (600-1)	1960-1¼ 658 (700-1¼)	2160-2¾ 858 (900-2¾)

ELEV 1302 TDZE 1301

1412

45

31

308°

5500 X 100

600 X 100

HIRL Rwy 13-31

MIRL Rwy 17-35

REIL Rws 13, 17 and 35

ABERDEEN, SOUTH DAKOTA

AL-642 (FAA)

25219

WAAS CH 42914 W31A	APP CRS 308°	Rwy Ldg 6901 TDZE 1301 Apt Elev 1302
--	------------------------	--

RNAV (GPS) RWY 31

ABERDEEN RGNL (ABR)

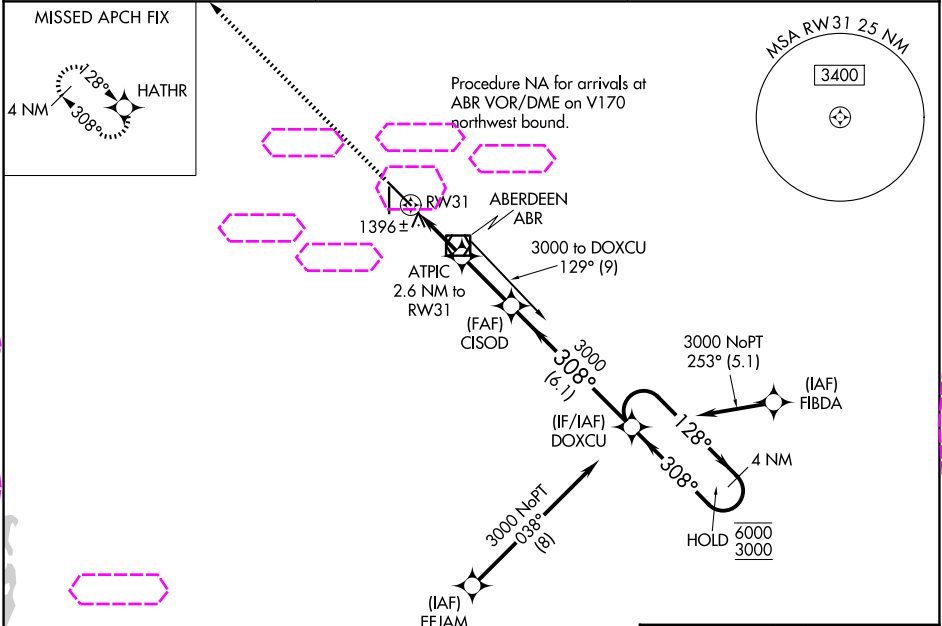
RNP APCH - GPS.

For uncompensated Baro-VNAV systems, LNAV/VNAV NA below -17°C or above 54°C. For inop ALS, increase LNAV/VNAV visibility all Cats to 7/8 SM and LNAV visibility all Cats to 1 SM.

MALSR

MISSED APPROACH: Climb to 3000 direct HATHR and hold.

ASOS 125.875	MINNEAPOLIS CENTER 120.6 371.9	UNICOM 122.7 (CTAF)
------------------------	--	-------------------------------



3000 HATHR

VGSI and RNAV glidepath not coincident (VGSI Angle 3.00/TCH 67).

ATPIC 2.6 NM to RW31

CISOD

DOXCU

4 NM Holding Pattern

0.9 NM to RW31

2180

3000

308°

128°

6000 3000

GP 3.00° TCH 52

CATEGORY	A	B	C	D
LPV DA		1501-1/2	200 (200-1/2)	
LNAV/VNAV DA		1599-1/2	298 (300-1/2)	
LNAV MDA	1660-1/2	359 (400-1/2)	1660-5/8	359 (400-5/8)
CIRCLING	1760-1 458 (500-1)	1860-1 558 (600-1)	1960-1 3/4 658 (700-1 3/4)	2160-2 3/4 858 (900-2 3/4)

ELEV 1302 TDZE 1301

HIRL Rwy 13-31
MIRL Rwy 17-35
REIL Rws 13, 17 and 35

NC-1, 07 AUG 2025 to 04 SEP 2025

NC-1, 07 AUG 2025 to 04 SEP 2025