

ABERDEEN, SOUTH DAKOTA

AL-642 (FAA)

21 280

WAAS CH <b>56340</b> <b>W17A</b>	APP CRS <b>173°</b>	Rwy Idg <b>5500</b> TDZE <b>1302</b> Apt Elev <b>1302</b>
--	------------------------	---

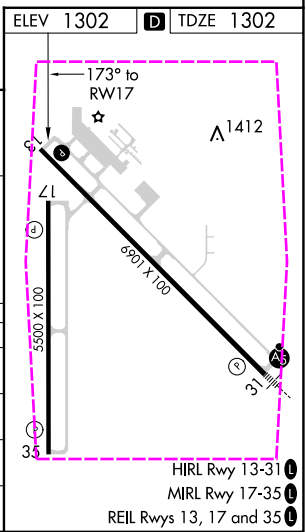
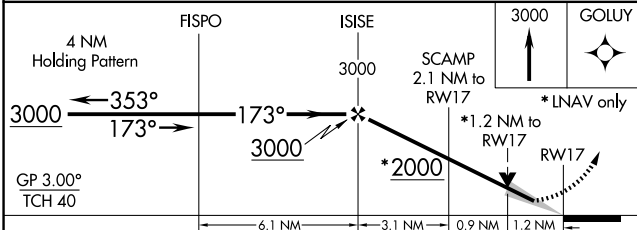
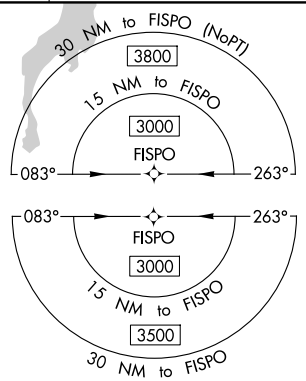
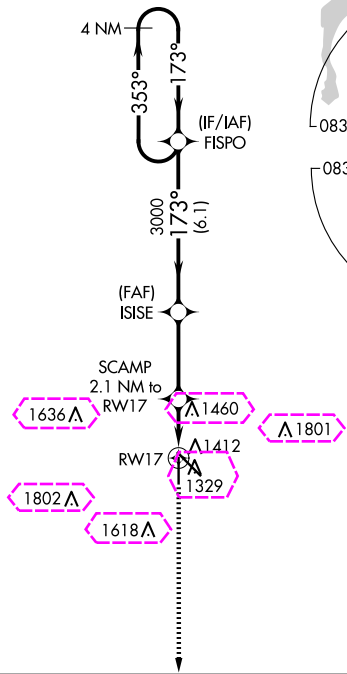
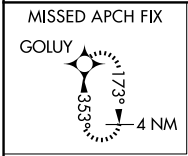
# RNAV (GPS) RWY 17

ABERDEEN RGNL (ABR)

**V** For uncompensated Baro-VNAV systems, LNAV/VNAV  
**A** NA below -22°C (-7°F) or above 54°C (130°F).  
DME/DME RNP-0.3 NA.

MISSED APPROACH: Climb to 3000 direct GOLUY and hold.

ASOS <b>125.875</b>	MINNEAPOLIS CENTER <b>120.6 371.9</b>	UNICOM <b>122.7 (CTAF)</b>
------------------------	--	-------------------------------



CATEGORY	A	B	C	D
LPV DA	1502-3/4	200 (200-3/4)		
LNAV/VNAV DA	1624-1 1/8	322 (400-1 1/8)		
LNAV MDA	1720-1	418 (500-1)	1720-1 1/8	418 (500-1 1/8)
<b>CIRCLING</b>	1760-1 458 (500-1)	1860-1 558 (600-1)	1960-1 3/4 658 (700-1 3/4)	2160-2 3/4 858 (900-2 3/4)

ABERDEEN, SOUTH DAKOTA  
Orig 02MAR17

45°27'N-98°25'W

ABERDEEN RGNL (ABR)  
RNAV (GPS) RWY 17

NC-1, 10 JUL 2025 to 07 AUG 2025

NC-1, 10 JUL 2025 to 07 AUG 2025

ABERDEEN, SOUTH DAKOTA

AL-642 (FAA)

25219

WAAS CH <b>56340</b> <b>W17A</b>	APP CRS <b>173°</b>	Rwy Ldg TDZE <b>1302</b> Apt Elev <b>1302</b>
--	------------------------	---

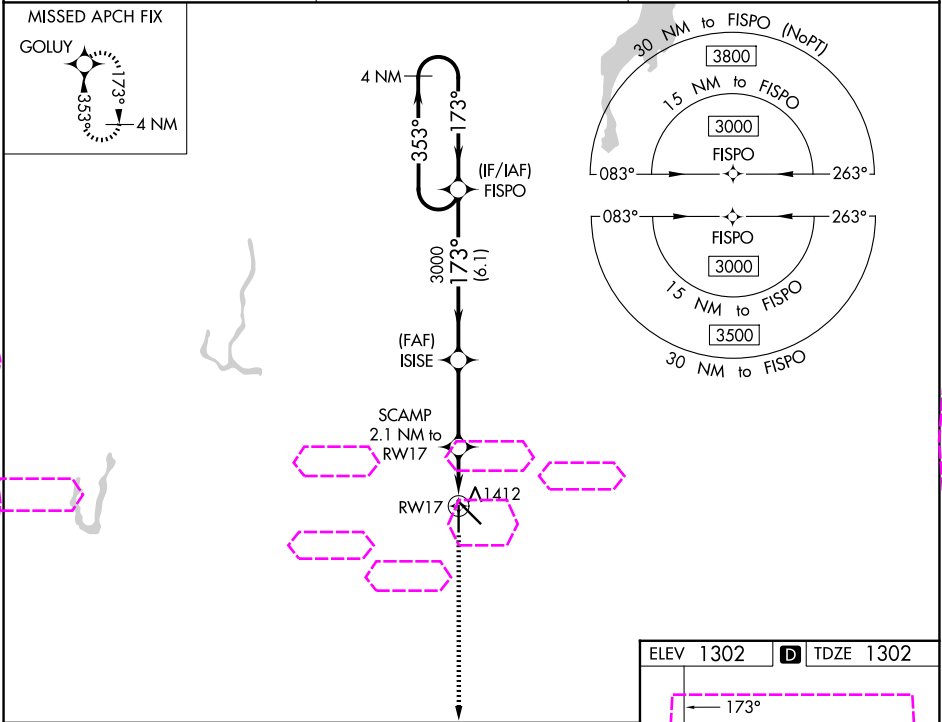
# RNAV (GPS) RWY 17

ABERDEEN RGNL (ABR)

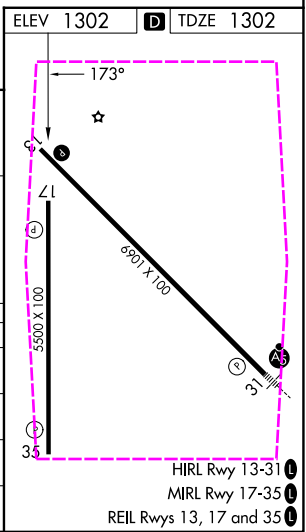
**⚠** For uncompensated Baro-VNAV systems, LNAV/VNAV NA below -22°C (-7°F) or above 54°C (130°F).  
DME/DME RNP-0.3 NA.

MISSED APPROACH: Climb to 3000 direct GOLUY and hold.

ASOS <b>125.875</b>	MINNEAPOLIS CENTER <b>120.6 371.9</b>	UNICOM <b>122.7 (CTAF) 0</b>
------------------------	--	---------------------------------



4 NM Holding Pattern		FISPO	ISISE	3000	GOLUY
3000 ← 353°		173° →	3000	*2000	*1.2 NM to RW17
GP 3.00° TCH 40		6.1 NM	3.1 NM	0.9 NM	1.2 NM
CATEGORY	A	B	C	D	
LPV DA	1502-3/4		200 (200-3/4)		
LNAV/VNAV DA	1624-1 1/8		322 (400-1 1/8)		
LNAV MDA	1720-1	418 (500-1)	1720-1 1/8	418 (500-1 1/8)	
CIRCLING	1760-1 458 (500-1)	1860-1 558 (600-1)	1960-1 3/4 658 (700-1 3/4)	2160-2 3/4 858 (900-2 3/4)	



ABERDEEN, SOUTH DAKOTA  
Orig 02MAR17

45°27'N-98°25'W

# RNAV (GPS) RWY 17

ABERDEEN RGNL (ABR)

NC-1, 07 AUG 2025 to 04 SEP 2025

NC-1, 07 AUG 2025 to 04 SEP 2025