

ABERDEEN, SOUTH DAKOTA

AL-642 (FAA)

23250

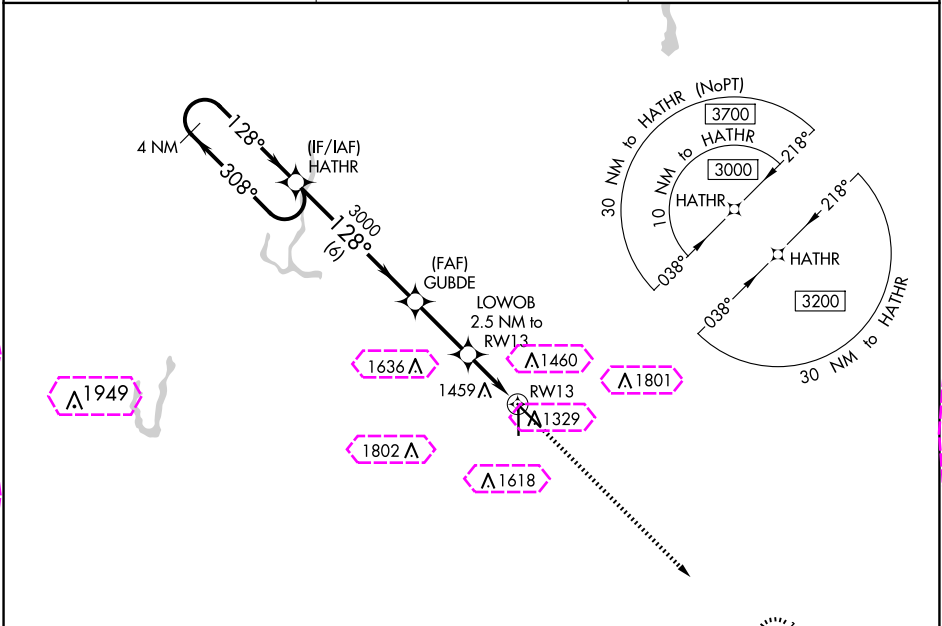
WAAS CH 40341 W13A	APP CRS 128°	Rwy Idg TDZE Apt Elev	6901 1302 1302
--	------------------------	-----------------------------	---

RNAV (GPS) RWY 13

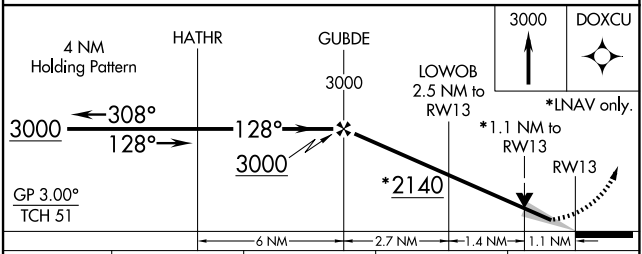
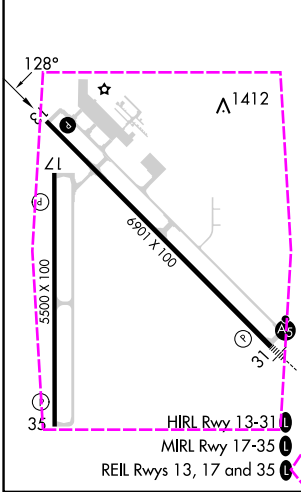
ABERDEEN RGNL (ABR)

RNP APCH - GPS.	MISSED APPROACH: Climb to 3000 direct DOXCU and hold.
-----------------	---

ASOS 125.875	MINNEAPOLIS CENTER 120.6 371.9	UNICOM 122.7 (CTAF)
------------------------	--	-------------------------------



ELEV 1302	TDZE 1302
-----------	-----------



CATEGORY	A	B	C	D
LPV DA	1502-1 200 (200-1)			
LNAV/VNAV DA	1752-1 $\frac{3}{8}$ 450 (500-1 $\frac{3}{8}$)			
LNAV MDA	1700-1	398 (400-1)	1700-1 $\frac{1}{8}$	398 (400-1 $\frac{1}{8}$)
CIRCLING	1760-1 458 (500-1)	1860-1 558 (600-1)	1960-1 $\frac{3}{4}$ 658 (700-1 $\frac{3}{4}$)	2160-2 $\frac{3}{4}$ 858 (900-2 $\frac{3}{4}$)

NC-1, 10 JUL 2025 to 07 AUG 2025

NC-1, 10 JUL 2025 to 07 AUG 2025

ABERDEEN, SOUTH DAKOTA

AL-642 (FAA)

25219

WAAS CH 40341 W13A	APP CRS 128°	Rwy Ldg TDZE Apt Elev	6901 1302 1302
--	------------------------	-----------------------------	---

RNAV (GPS) RWY 13

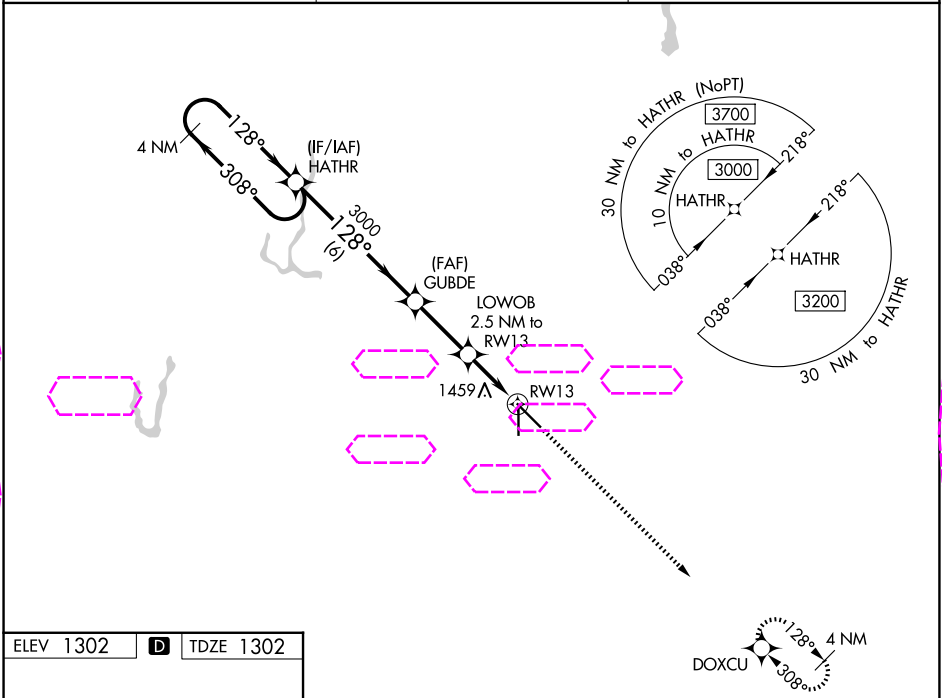
ABERDEEN RGNL (ABR)

RNP APCH - GPS.

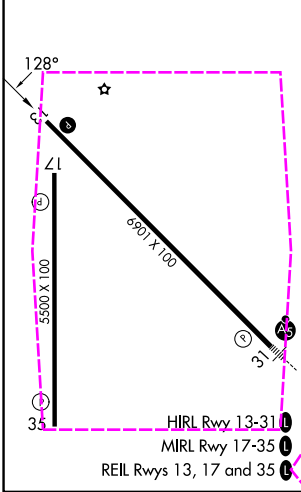
For uncompensated Baro-VNAV systems, LNAV/VNAV NA below -21°C or above 54°C.

MISSED APPROACH: Climb to 3000 direct DOXCU and hold.

ASOS 125.875	MINNEAPOLIS CENTER 120.6 371.9	UNICOM 122.7 (CTAF)
------------------------	--	-------------------------------



ELEV 1302	TDZE 1302
-----------	-----------



4 NM Holding Pattern		HATHR	GUBDE	3000	LOWOB 2.5 NM to RW13	3000 ↑ DOXCU ✦
3000 ← 308° 128° →		128° →	3000	*2140	*1.1 NM to RW13	*LNAV only.
GP 3.00° TCH 51		6 NM		2.7 NM	1.4 NM	1.1 NM
CATEGORY	A	B	C	D		
LPV DA	1502-1 200 (200-1)					
LNAV/ VNAV DA	1752-1 450 (500-1)					
LNAV MDA	1700-1	398 (400-1)	1700-1	398 (400-1)		
CIRCLING	1760-1 458 (500-1)	1860-1 558 (600-1)	1960-1 658 (700-1)	2160-2 858 (900-2)		

ABERDEEN, SOUTH DAKOTA
Amdt 1A 07SEP23

45°27'N-98°25'W

ABERDEEN RGNL (ABR)
RNAV (GPS) RWY 13

NC-1, 07 AUG 2025 to 04 SEP 2025

NC-1, 07 AUG 2025 to 04 SEP 2025