

ABERDEEN, SOUTH DAKOTA

AL-642 (FAA)

21280

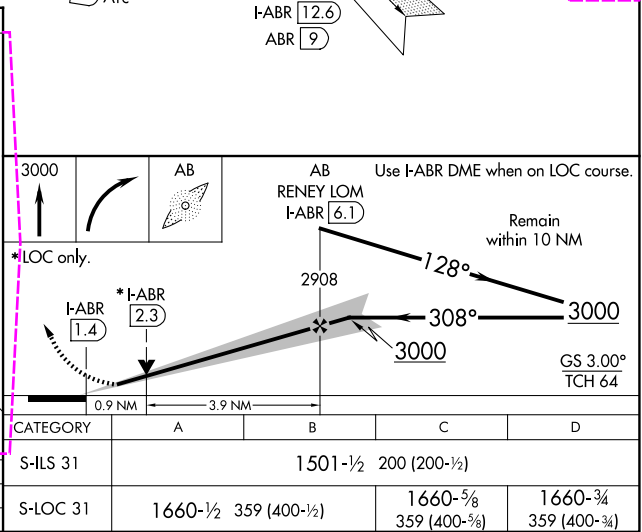
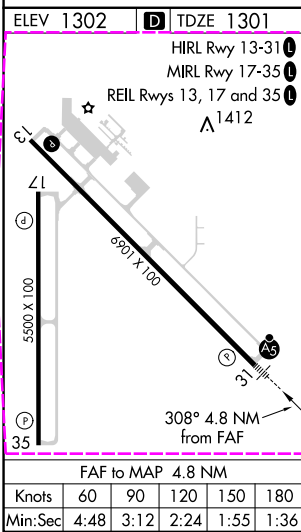
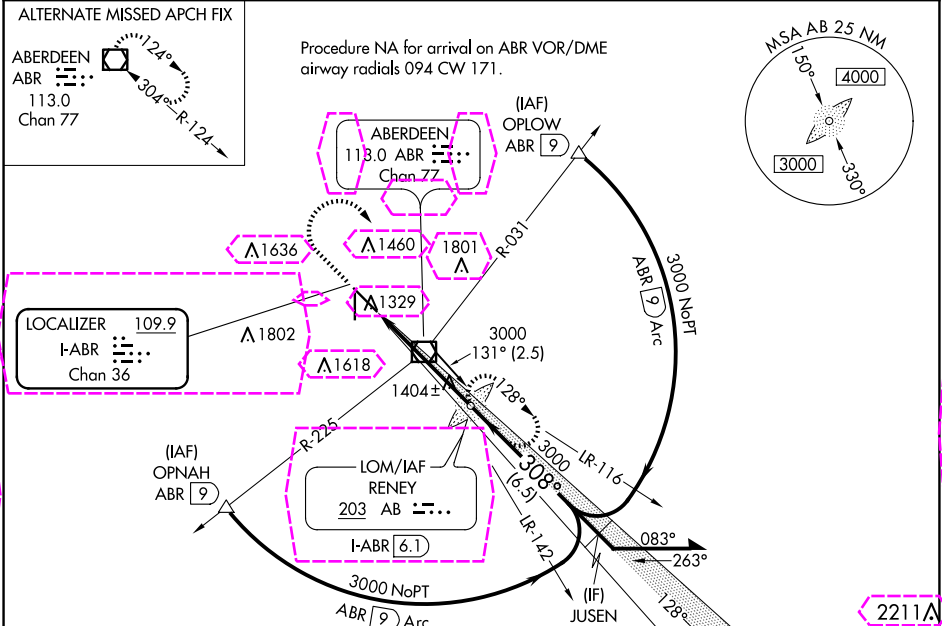
LOC/DME I-ABR 109.9 Chan 36	APP CRS 308°	Rwy Idg 6901 TDZE 1301 Apt Elev 1302
---	------------------------	--

ILS or LOC RWY 31

ABERDEEN RGNL (ABR)

ADF required. For inop ALS, increase S-LOC 31 Cats C/D visibility to 1 SM.	MALSR 45	MISSED APPROACH: Climb to 3000 then right turn direct RENEY LOM/I-ABR 6.1 DME and hold.
--	-------------	--

ASOS 125.875	MINNEAPOLIS CENTER 120.6 371.9	UNICOM 122.7 (CTAF)
------------------------	--	-------------------------------



ABERDEEN, SOUTH DAKOTA
Amdt 13B 07NOV19

45°27'N-98°25'W

ILS or LOC RWY 31

ABERDEEN RGNL (ABR)

NC-1, 10 JUL 2025 to 07 AUG 2025

NC-1, 10 JUL 2025 to 07 AUG 2025

ABERDEEN, SOUTH DAKOTA

AL-642 (FAA)

25219

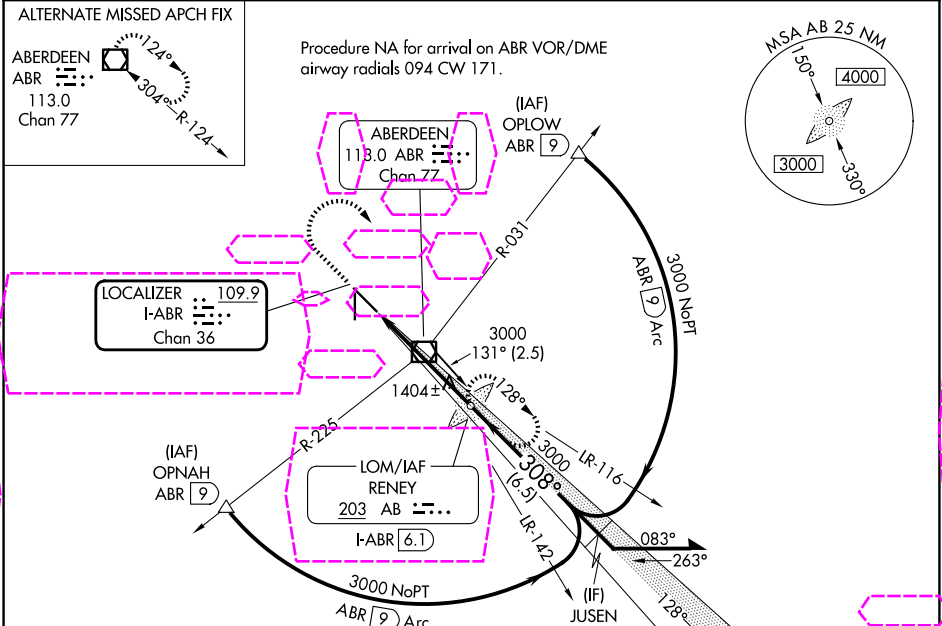
LOC/DME I-ABR 109.9 Chan 36	APP CRS 308°	Rwy Ldg TDZE Apt Elev	6901 1301 1302
---	------------------------	-----------------------------	---

ILS or LOC RWY 31

ABERDEEN RGNL (ABR)

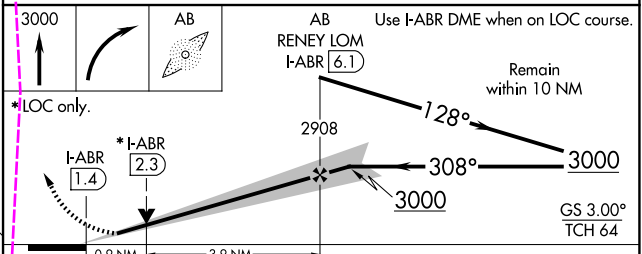
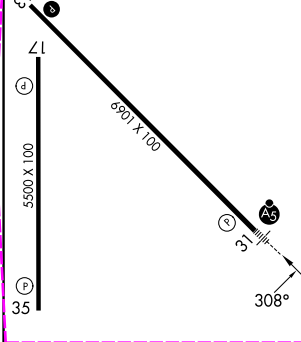
ADF required. For inop ALS, increase S-LOC 31 Cats C/D visibility to 1 SM.	MALSR AS	MISSED APPROACH: Climb to 3000 then right turn direct RENEY LOM/I-ABR 6.1 DME and hold.
---	-------------	---

ASOS 125.875	MINNEAPOLIS CENTER 120.6 371.9	UNICOM 122.7 (CTAF)
------------------------	--	-------------------------------



ELEV 1302	TDZE 1301
-----------	-----------

- REIL Rwy 13, 17 and 35
- HIRL Rwy 13-31
- MIRL Rwy 17-35



CATEGORY	A	B	C	D
S-ILS 31	1501-½ 200 (200-½)			
S-LOC 31	1660-½	359 (400-½)	1660-⅝ 359 (400-⅝)	1660-¾ 359 (400-¾)

ABERDEEN, SOUTH DAKOTA
Amdt 13B 07NOV19

45°27'N-98°25'W

ILS or LOC RWY 31

ABERDEEN RGNL (ABR)

NC-1, 07 AUG 2025 to 04 SEP 2025

NC-1, 07 AUG 2025 to 04 SEP 2025