

MINOT, NORTH DAKOTA

AL-635 (FAA)

21280

VOR/DME MOT	APP CRS	Rwy Idg
117.1	067°	5955
Chan 118		TDZE 1712
		Apt Elev 1716

VOR RWY 8

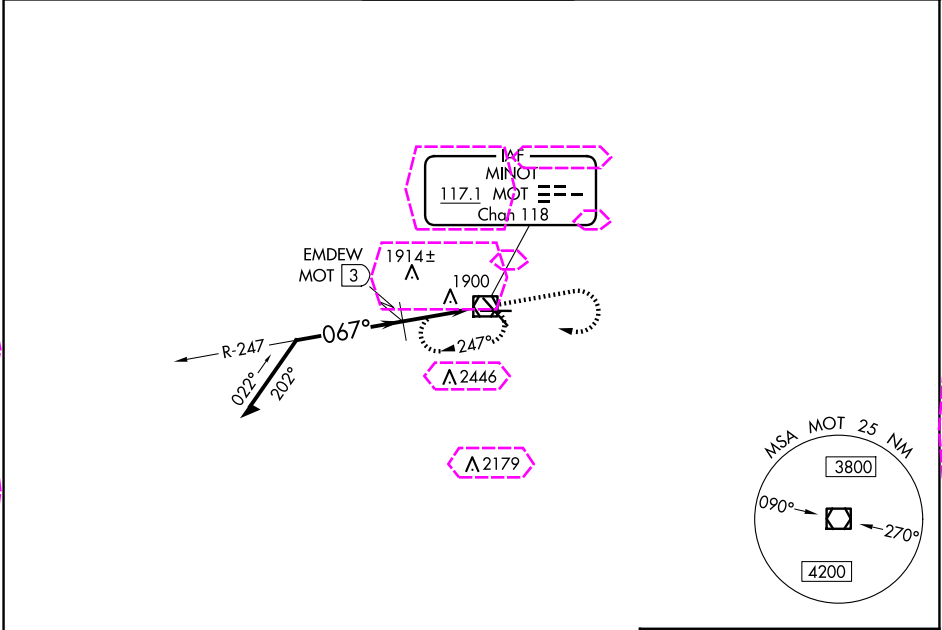
MINOT INTL (MOT)

▼
▲

Rwy 8 helicopter visibility reduction below ¾ NA.

MISSED APPROACH: Climb to 3800 then right turn direct MOT VOR/DME and hold.

ASOS 118.725	MINOT APP CON ★ 119.6 363.8	MAGIC CITY TOWER ★ 118.2 (CTAF) 251.125	GND CON 121.9	UNICOM 122.95
-----------------	--------------------------------	--	------------------	------------------



VGSI and descent angles not coincident (VGSI Angle 3.00/TCH 45).

Remain within 10 NM

3800

2760

EMDEW MOT 3

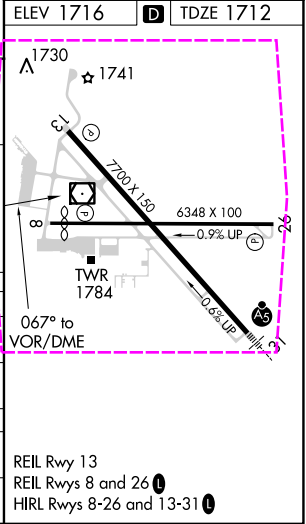
MOT 1.4

TCH 49

1.6 NM

1.3

CATEGORY	A	B	C	D
S-8	2760-1¼ 1048 (1100-1¼)	2760-1½ 1048 (1100-1½)	2760-3	1048 (1100-3)
CIRCLING	2760-1¼ 1044 (1100-1¼)	2760-1½ 1044 (1100-1½)	2800-3	1084 (1100-3)
EMDEW FIX MINIMUMS				
S-8	2180-1	468 (500-1)	2180-1⅜ 468 (500-1⅜)	2180-1½ 468 (500-1½)
CIRCLING	2200-1 484 (500-1)	2240-1 524 (600-1)	2800-3	1084 (1100-3)



MINOT, NORTH DAKOTA
Amdt 11B 07OCT21

48°15'N-101°17'W

MINOT INTL (MOT)

VOR RWY 8

NC-1, 10 JUL 2025 to 07 AUG 2025

NC-1, 10 JUL 2025 to 07 AUG 2025

MINOT, NORTH DAKOTA

AL-635 (FAA)

25219

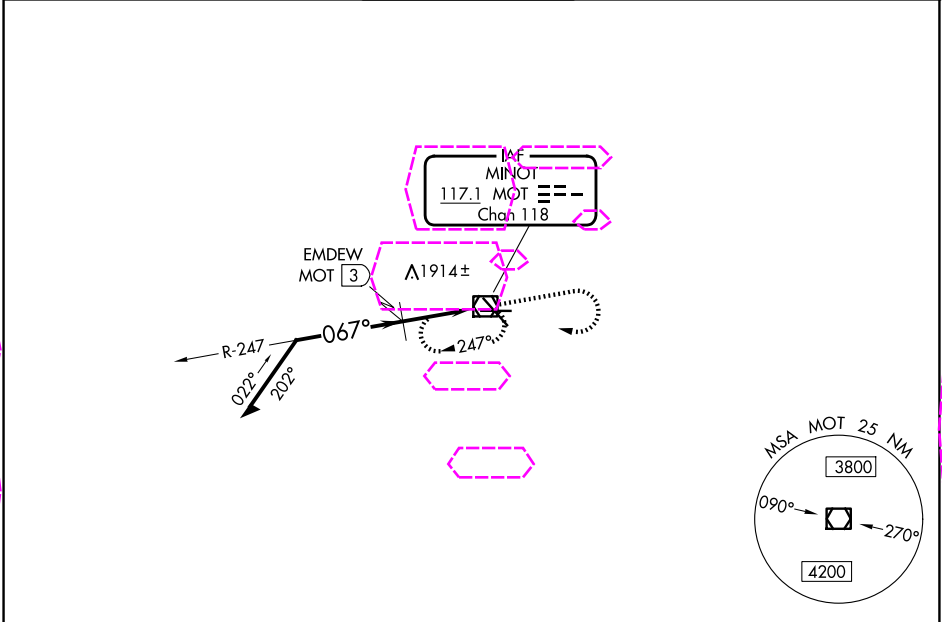
VOR/DME MOT	APP CRS	Rwy Ldg
117.1	067°	5955
Chan 118		TDZE 1712
		Apt Elev 1716

VOR RWY 8
MINOT INTL (MOT)

▼
▲ Rwy 8 helicopter visibility reduction below $\frac{3}{4}$ NA.

MISSED APPROACH: Climb to 3800 then right turn direct MOT VOR/DME and hold.

ASOS 118.725	MINOT APP CON ★ 119.6 363.8	MAGIC CITY TOWER ★ 118.2 (CTAF) 251.125	GND CON 121.9	UNICOM 122.95
------------------------	---------------------------------------	---	-------------------------	-------------------------



CATEGORY	A	B	C	D
S-8	2760-1 $\frac{1}{4}$ 1048 (1100-1 $\frac{1}{4}$)	2760-1 $\frac{1}{2}$ 1048 (1100-1 $\frac{1}{2}$)	2760-3	1048 (1100-3)
CIRCLING	2760-1 $\frac{1}{4}$ 1044 (1100-1 $\frac{1}{4}$)	2760-1 $\frac{1}{2}$ 1044 (1100-1 $\frac{1}{2}$)	2800-3	1084 (1100-3)

EMDEW FIX MINIMUMS

S-8	2180-1	468 (500-1)	2180-1 $\frac{3}{8}$ 468 (500-1 $\frac{3}{8}$)	2180-1 $\frac{1}{2}$ 468 (500-1 $\frac{1}{2}$)
CIRCLING	2200-1 484 (500-1)	2240-1 524 (600-1)	2800-3	1084 (1100-3)

VGSI and descent angles not coincident (VGSI Angle 3.00/TCH 45).

Remain within 10 NM

3800

2760

3.26°

TCH 49

1.6 NM

1.3

247°

067°

EMDEW MOT (3)

MOT (1.4)

MOT VOR/DME

3800

MOT

067°

2700 X 150

6348 X 100

0.9% UP

0.9% UP

TWR

REIL Rwy 13

REIL Rws 8 and 26

HIRL Rws 8-26 and 13-31

MINOT, NORTH DAKOTA
Amdt 11B 07OCT21

48°15'N-101°17'W

MINOT INTL (MOT)
VOR RWY 8