

MINOT, NORTH DAKOTA

AL-635 (FAA)

22055

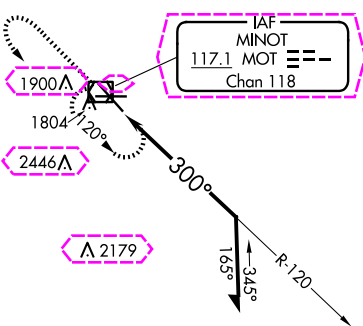
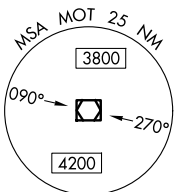
VOR/DME MOT	APP CRS	Rwy Idg	7700
117.1	300°	TDZE	1679
Chan 118		Apt Elev	1716

# VOR RWY 31

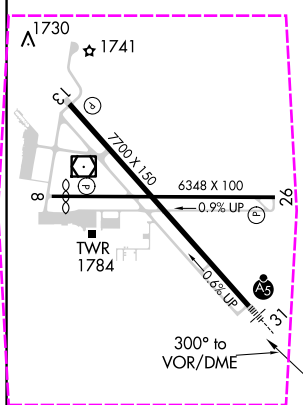
MINOT INTL (MOT)

		MISSED APPROACH: Climb to 3500 then left turn direct MOT VOR/DME and hold.
--	--	--

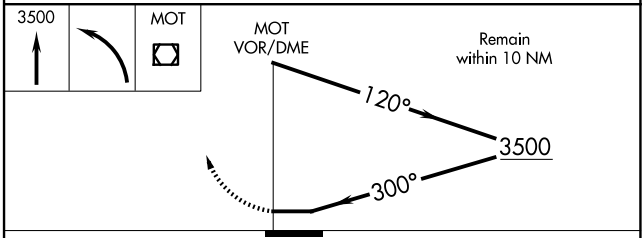
ASOS 118.725	MINOT APP CON ★ 119.6 363.8	MAGIC CITY TOWER ★ 118.2 (CTAF) 251.125	GND CON 121.9	UNICOM 122.95
-----------------	--------------------------------	--	------------------	------------------



ELEV 1716	D	TDZE 1679
-----------	---	-----------



REIL Rwy 13  
REIL Rwy 8 and 26  
HIRL Rwy 8-26 and 13-31



CATEGORY	A	B	C	D
S-31	2200/24	521 (500-½)	2200/55	2200/60
CIRCLING	2200-1	2240-1	2800-3	1084 (1100-3)
	484 (500-1)	524 (600-1)		521 (500-1¼)

MINOT, NORTH DAKOTA  
Amdt 11B 07OCT21

48°15'N-101°17'W

# MINOT INTL (MOT)

# VOR RWY 31

NC-1, 10 JUL 2025 to 07 AUG 2025

NC-1, 10 JUL 2025 to 07 AUG 2025

MINOT, NORTH DAKOTA

AL-635 (FAA)

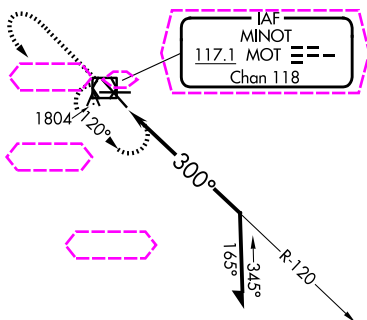
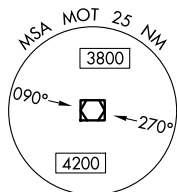
25219

VOR/DME MOT <b>117.1</b> Chan <b>118</b>	APP CRS <b>300°</b>	Rwy Ldg TDZE <b>1679</b> Apt Elev <b>1716</b>
--	------------------------	---

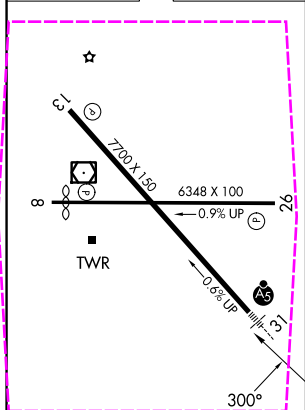
VOR RWY 31  
MINOT INTL (MOT)

	MALSR 	MISSED APPROACH: Climb to 3500 then left turn direct MOT VOR/DME and hold.
--	-----------	--

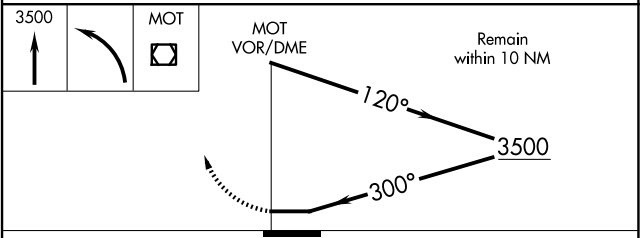
ASOS <b>118.725</b>	MINOT APP CON ★ <b>119.6 363.8</b>	MAGIC CITY TOWER ★ <b>118.2 (CTAF) 251.125</b>	GND CON <b>121.9</b>	UNICOM <b>122.95</b>
------------------------	---------------------------------------	---	-------------------------	-------------------------



ELEV 1716	D	TDZE 1679
-----------	---	-----------



REIL Rwy 13  
REIL Rwy 8 and 26  
HIRL Rwy 8-26 and 13-31



CATEGORY	A	B	C	D
S-31	2200/24	521 (500-½)	2200/55 521 (500-1)	2200/60 521 (500-1¼)
CIRCLING	2200-1 484 (500-1)	2240-1 524 (600-1)	2800-3	1084 (1100-3)

MINOT, NORTH DAKOTA  
Amdt 11B 07OCT21

48°15'N-101°17'W

MINOT INTL (MOT)  
VOR RWY 31

NC-1, 07 AUG 2025 to 04 SEP 2025

NC-1, 07 AUG 2025 to 04 SEP 2025