

MINOT, NORTH DAKOTA

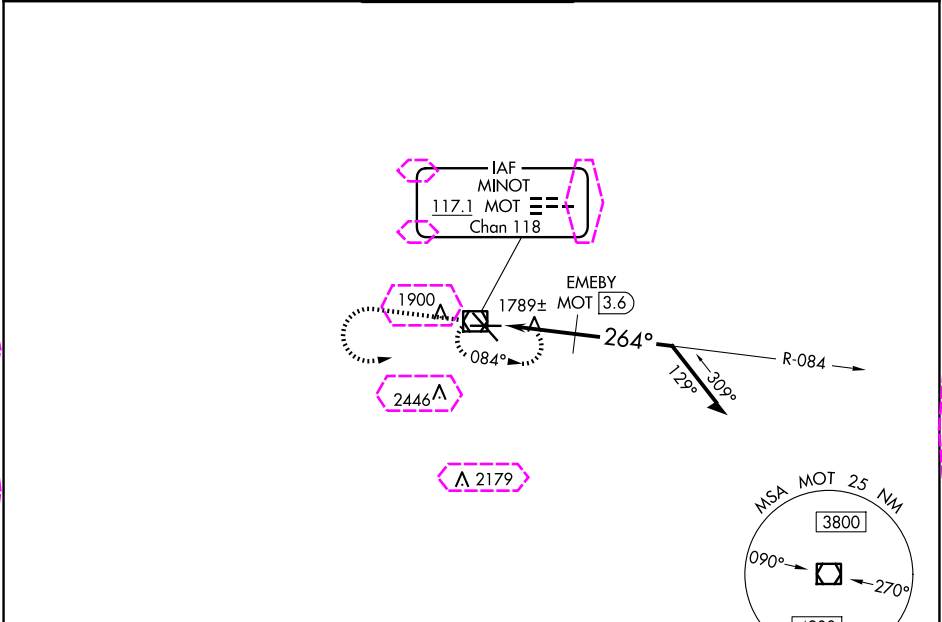
AL-635 (FAA)

21280

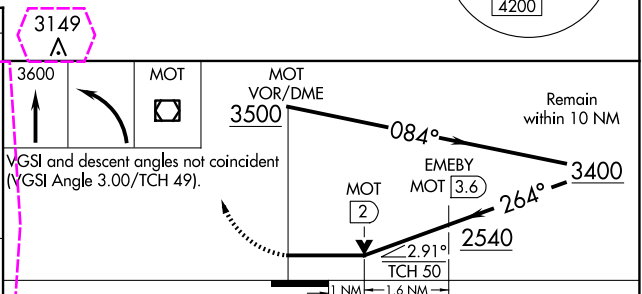
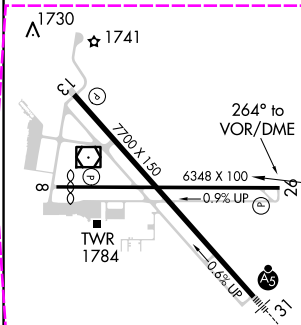
VOR/DME MOT <b>117.1</b> Chan <b>118</b>	APP CRS <b>264°</b>	Rwy Idg TDZE <b>1682</b> Apt Elev <b>1716</b>
--	------------------------	---

VOR RWY 26  
MINOT INTL (MOT)

ASOS <b>118.725</b>		MINOT APP CON ★ <b>119.6 363.8</b>	MAGIC CITY TOWER ★ <b>118.2 (CTAF) 251.125</b>	GND CON <b>121.9</b>	UNICOM <b>122.95</b>
------------------------	--	---------------------------------------	---	-------------------------	-------------------------



ELEV 1716	D	TDZE 1682
-----------	---	-----------



CATEGORY	A	B	C	D
S-26	2540-1 858 (900-1)	2540-1¼ 858 (900-1¼)	2540-2½ 858 (900-2½)	2540-2¾ 858 (900-2¾)
CIRCLING	2540-1 824 (900-1)	2540-1¼ 824 (900-1¼)	2800-3	1084 (1100-3)
EMEBY FIX MINIMUMS				
S-26	2040-1 358 (400-1)			2040-1¼ 358 (400-1¼)
CIRCLING	2200-1 484 (500-1)	2240-1 524 (600-1)	2800-3	1084 (1100-3)

MINOT, NORTH DAKOTA  
Amdt 13B 07OCT21

48°15'N-101°17'W

MINOT INTL (MOT)  
VOR RWY 26

NC-1, 10 JUL 2025 to 07 AUG 2025

NC-1, 10 JUL 2025 to 07 AUG 2025

MINOT, NORTH DAKOTA

AL-635 (FAA)

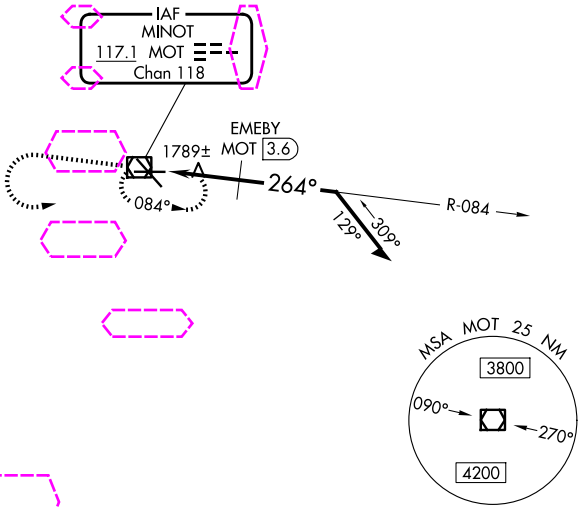
25219

VOR/DME MOT <b>117.1</b> Chan <b>118</b>	APP CRS <b>264°</b>	Rwy Ldg TDZE <b>1682</b> Apt Elev <b>1716</b>
--	------------------------	---

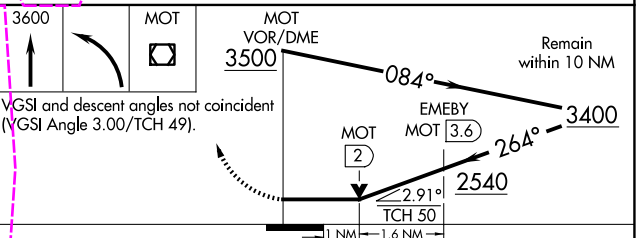
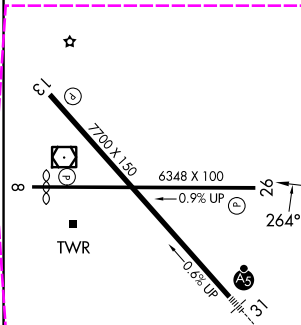
VOR RWY 26  
MINOT INTL (MOT)

ASOS <b>118.725</b>		MINOT APP CON ★ <b>119.6 363.8</b>	MAGIC CITY TOWER ★ <b>118.2(CTAF) 251.125</b>	GND CON <b>121.9</b>	UNICOM <b>122.95</b>
------------------------	--	---------------------------------------	--	-------------------------	-------------------------

MISSED APPROACH: Climb to 3600 then left turn direct MOT VOR/DME and hold.



ELEV 1716	D	TDZE 1682
-----------	---	-----------



CATEGORY	A	B	C	D
S-26	2540-1 858 (900-1)	2540-1¼ 858 (900-1¼)	2540-2½ 858 (900-2½)	2540-2¾ 858 (900-2¾)
CIRCLING	2540-1 824 (900-1)	2540-1¼ 824 (900-1¼)	2800-3	1084 (1100-3)
EMBLY FIX MINIMUMS				
S-26	2040-1 358 (400-1)			2040-1¼ 358 (400-1¼)
CIRCLING	2200-1 484 (500-1)	2240-1 524 (600-1)	2800-3	1084 (1100-3)

REIL Rwy 13  
REIL Rwys 8 and 26  
HIRL Rwys 8-26 and 13-31

MINOT, NORTH DAKOTA  
Amdt 13B 07OCT21

48°15'N-101°17'W

MINOT INTL (MOT)  
VOR RWY 26

NC-1, 07 AUG 2025 to 04 SEP 2025

NC-1, 07 AUG 2025 to 04 SEP 2025