

MINOT, NORTH DAKOTA

AL-635 (FAA)

21 280

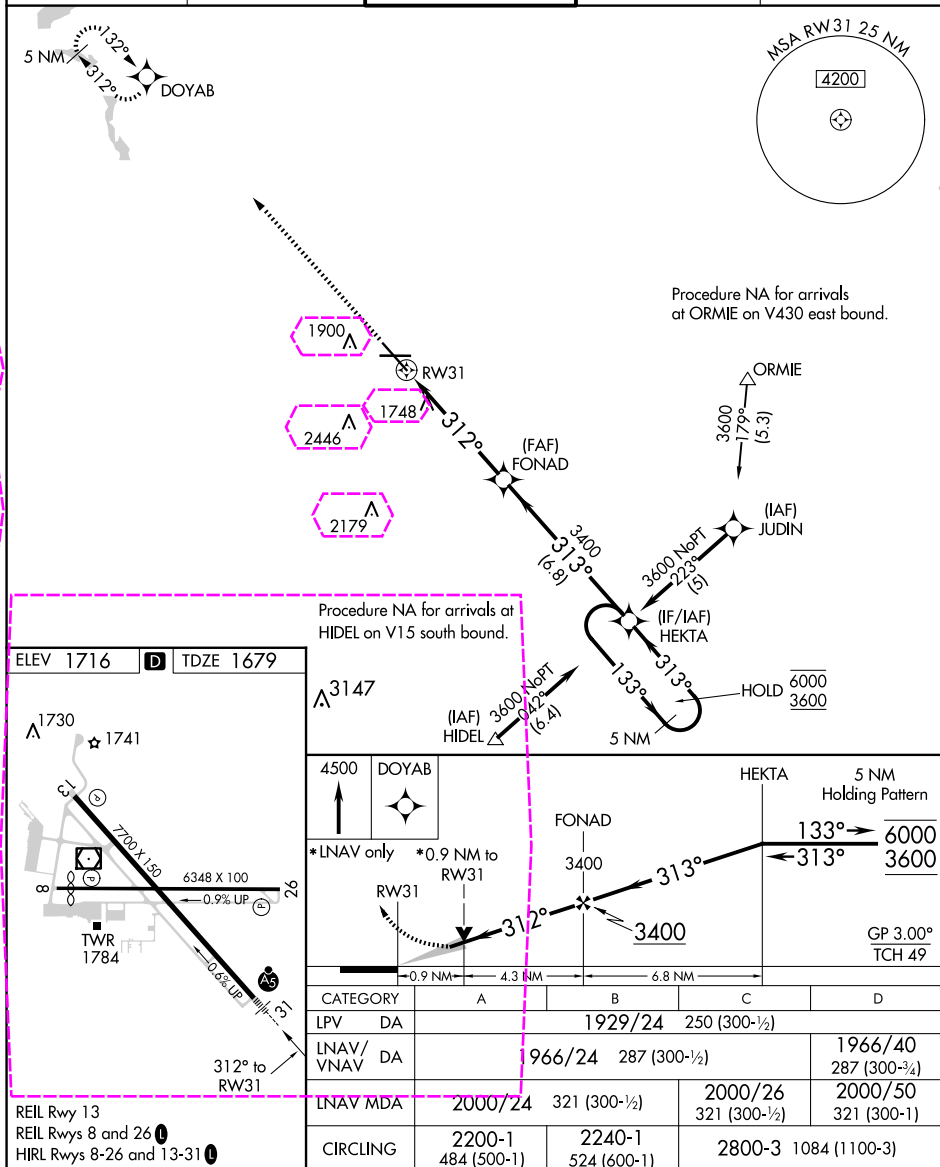
WAAS CH <b>66099</b> <b>W31A</b>	APP CRS <b>312°</b>	Rwy Idg TDZE <b>1679</b> Apt Elev <b>1716</b>
--	------------------------	---

# RNAV (GPS) RWY 31

MINOT INTL (MOT)

RNP APCH. V A For uncompensated Baro-VNAV systems, LNAV/VNAV NA below -18°C or above 54°C. For inop ALS increase LNAV/VNAV visibility to RVR 4500.	MALSR AS	MISSED APPROACH: Climb to 4500 direct DOYAB and hold.
---	-------------	---

ASOS <b>118.725</b>	MINOT APP CON * <b>119.6 363.8</b>	MAGIC CITY TOWER * <b>118.2 (CTAF) 251.125</b>	GND CON <b>121.9</b>	UNICOM <b>122.95</b>
------------------------	---------------------------------------	---	-------------------------	-------------------------



MINOT, NORTH DAKOTA

Amdt 1D 07OCT21

48°15'N-101°17'W

MINOT INTL (MOT)

# RNAV (GPS) RWY 31

NC-1, 10 JUL 2025 to 07 AUG 2025

NC-1, 10 JUL 2025 to 07 AUG 2025

MINOT, NORTH DAKOTA

AL-635 (FAA)

25219

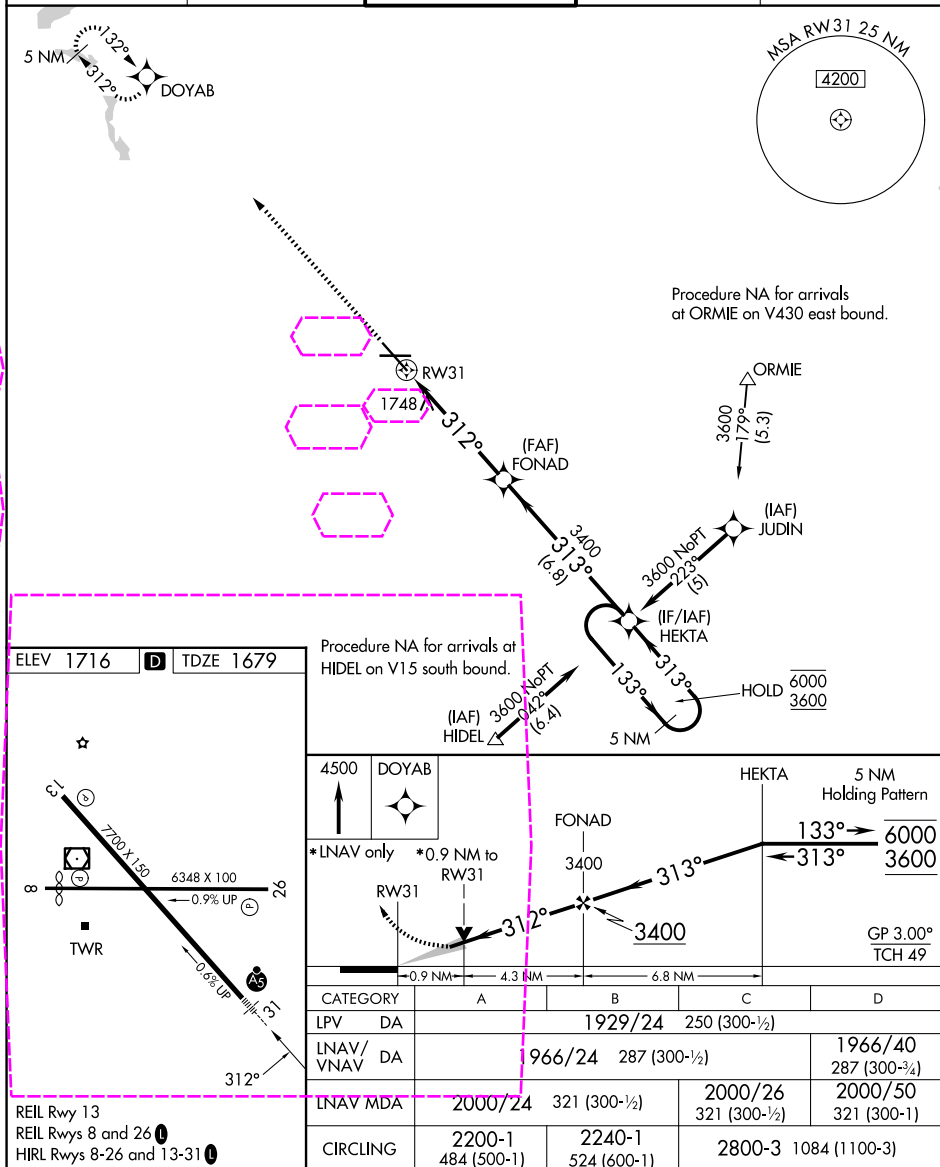
WAAS CH <b>66099</b> <b>W31A</b>	APP CRS <b>312°</b>	Rwy Ldg TDZE Apt Elev	<b>7700</b> <b>1679</b> <b>1716</b>
--	------------------------	-----------------------------	---

# RNAV (GPS) RWY 31

MINOT INTL (MOT)

RNP APCH. <b>V</b> For uncompensated Baro-VNAV systems, LNAV/VNAV NA below -18°C or above 54°C. For inop ALS increase LNAV/VNAV visibility to RVR 4500.	MALSR 	MISSED APPROACH: Climb to 4500 direct DOYAB and hold.
---	-----------	---

ASOS <b>118.725</b>	MINOT APP CON * <b>119.6 363.8</b>	MAGIC CITY TOWER * <b>118.2 (CTAF) 0 251.125</b>	GND CON <b>121.9</b>	UNICOM <b>122.95</b>
------------------------	---------------------------------------	---	-------------------------	-------------------------



NC-1, 07 AUG 2025 to 04 SEP 2025

NC-1, 07 AUG 2025 to 04 SEP 2025

MINOT, NORTH DAKOTA

Amdt 1D 07OCT21

48°15'N-101°17'W

MINOT INTL (MOT)

# RNAV (GPS) RWY 31