

| | | | |
|--|------------------------|-----------------------------|---|
| WAAS CH 56516 W26A | APP CRS 264° | Rwy Ldg TDZE Apt Elev | 6348 1682 1716 |
|--|------------------------|-----------------------------|---|

RNAV (GPS) RWY 26
MINOT INTL (MOT)

RNP APCH.

T For uncompensated Baro-VNAV systems, LNAV/VNAV NA below -18°C or
A above 54°C.

MISSED APPROACH: Climb to 3900 direct GEBVE and hold.

ASOS
118.725

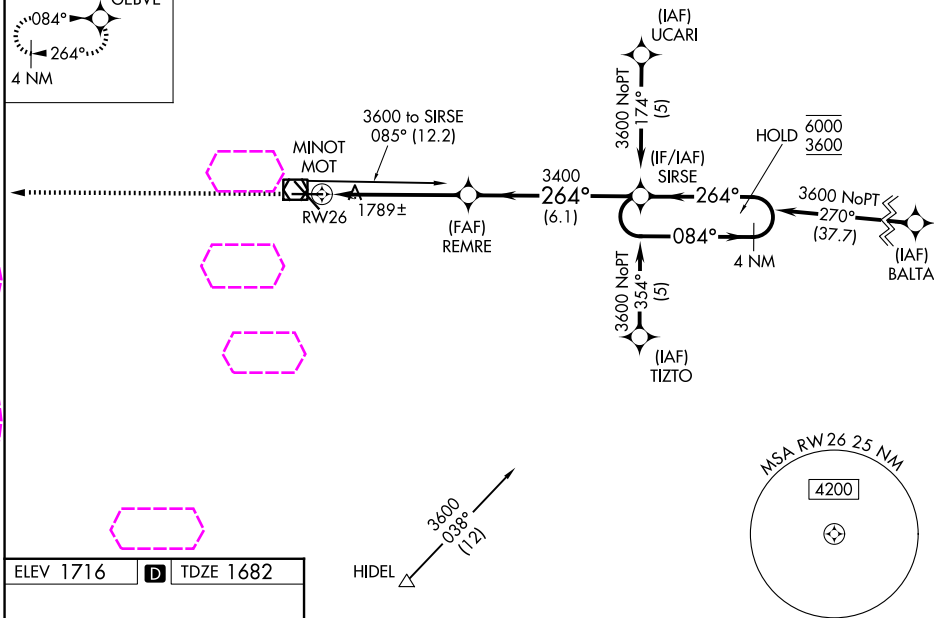
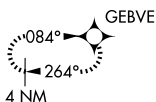
MINOT APP CON ★
119.6 363.8

MAGIC CITY TOWER★
118.2 (CTAF) 251.125

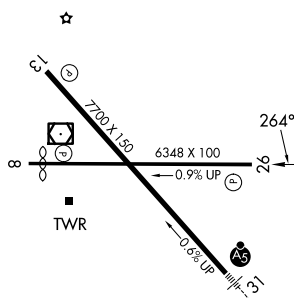
GND CON
121.9

UNICOM
122.95

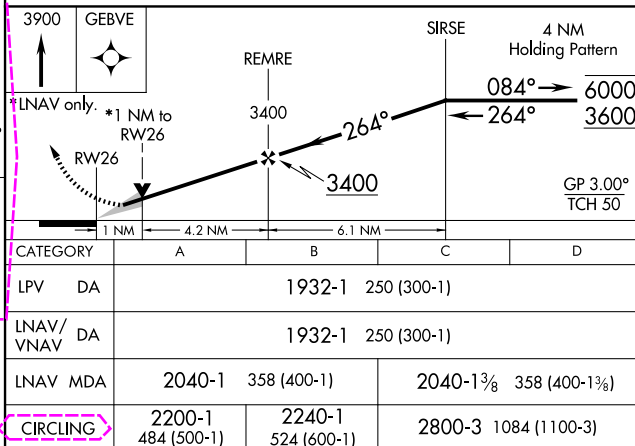
MISSED APCH FIX



| | | |
|-----------|----------|-----------|
| ELEV 1716 | D | TDZE 1682 |
|-----------|----------|-----------|



REIL Rwy 13
REIL Rwy 8 and 26 (L)
HIRL Rwy 8-26 and 13-31 (L)



MINOT, NORTH DAKOTA
Orig-B 07OCT21

48°15'N-101°17'W

MINOT INTL (MOT)
RNAV (GPS) RWY 26

NC-1, 07 AUG 2025 to 04 SEP 2025