

MINOT, NORTH DAKOTA

AL-635 (FAA)

21 280

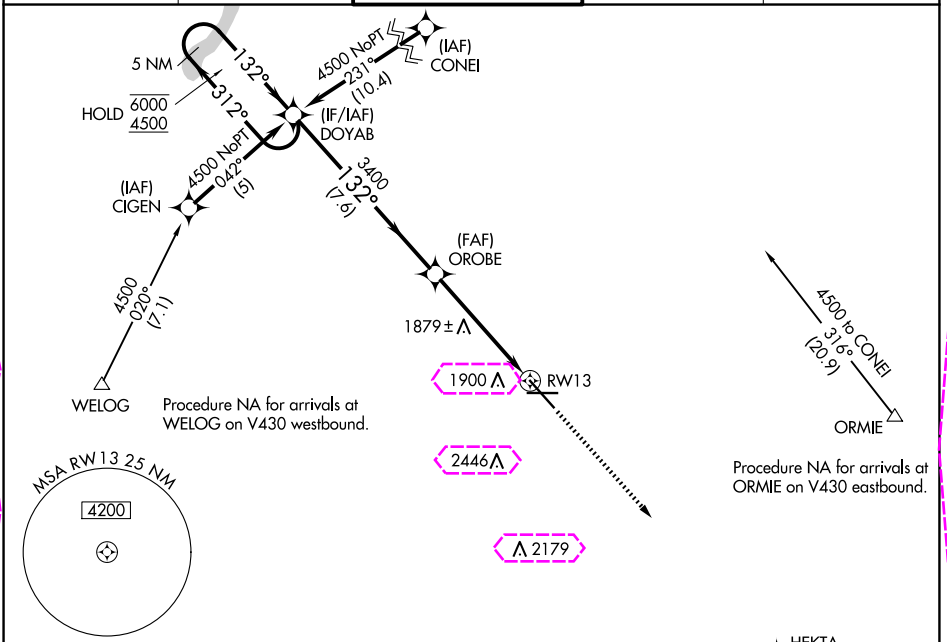
WAAS CH <b>70399</b> <b>W13A</b>	APP CRS <b>132°</b>	Rwy Idg TDZE Apt Elev	<b>7700</b> <b>1702</b> <b>1716</b>
--	------------------------	-----------------------------	---

# RNAV (GPS) RWY 13

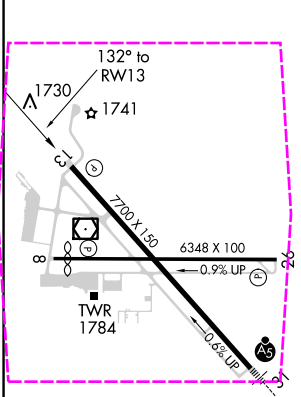
MINOT INTL (MOT)

RNP APCH.	MISSED APPROACH: Climb to 4000 direct HEKTA and hold.
▼ For uncompensated Baro-VNAV systems, LNAV/VNAV NA below -18°C or above 54°C.	

ASOS <b>118.725</b>	MINOT APP CON * <b>119.6 363.8</b>	MAGIC CITY TOWER * <b>118.2 (CTAF) 0 251.125</b>	GND CON <b>121.9</b>	UNICOM <b>122.95</b>
------------------------	---------------------------------------	---	-------------------------	-------------------------



ELEV 1716	D	TDZE 1702
-----------	---	-----------



REIL Rwy 13  
REIL Rwy 8 and 26  
HIRL Rwy 8-26 and 13-31

3149				
5 NM Holding Pattern				
DOYAB				
OROBE				
HEKTA				
4000				
HEKTA				
*1.2 NM to RWY 13				
*LNAV only.				
GP 3.00° TCH 49				
7.6 NM 3.9 NM 1.2				
CATEGORY	A	B	C	D
LPV DA	2021-1 319 (400-1)			
LNAV/VNAV DA	2181-1 3/4 479 (500-1 3/4)			
LNAV MDA	2140-1	438 (500-1)	2140-1 1/4 438 (500-1 1/4)	2140-1 1/2 438 (500-1 1/2)
CIRCLING	2200-1 484 (500-1)	2240-1 524 (600-1)	2800-3 1084 (1100-3)	

MINOT, NORTH DAKOTA  
Amdt 1E 07OCT21

48°15'N-101°17'W

# RNAV (GPS) RWY 13

MINOT, NORTH DAKOTA

AL-635 (FAA)

25219

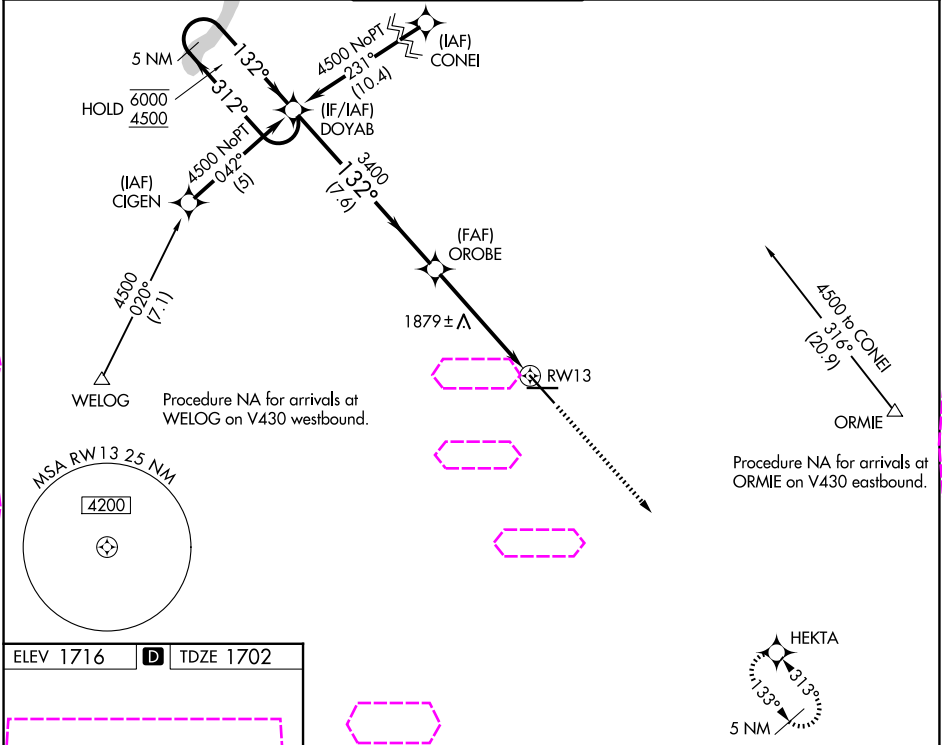
WAAS CH <b>70399</b> <b>W13A</b>	APP CRS <b>132°</b>	Rwy Ldg TDZE Apt Elev	<b>7700</b> <b>1702</b> <b>1716</b>
--	------------------------	-----------------------------	---

# RNAV (GPS) RWY 13

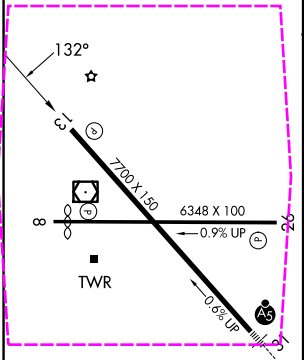
MINOT INTL (MOT)

RNP APCH.	MISSED APPROACH: Climb to 4000 direct HEKTA and hold.
For uncompensated Baro-VNAV systems, LNAV/VNAV NA below -18°C or above 54°C.	

ASOS <b>118.725</b>	MINOT APP CON * <b>119.6 363.8</b>	MAGIC CITY TOWER * <b>118.2 (CTAF) 251.125</b>	GND CON <b>121.9</b>	UNICOM <b>122.95</b>
------------------------	---------------------------------------	---	-------------------------	-------------------------



ELEV 1716	D	TDZE 1702
-----------	---	-----------



REIL Rwy 13  
REIL Rwy 8 and 26  
HIRL Rwy 8-26 and 13-31

5 NM Holding Pattern		DOYAB	OROBE	4000	HEKTA
6000 4500		312°	132°	3400	*1.2 NM to RW13
GP 3.00° TCH 49		7.6 NM	3.9 NM	1.2	*LNAV only.
CATEGORY	A	B	C	D	
LPV DA	2021-1 319 (400-1)				
LNAV/VNAV DA	2181-1 3/4 479 (500-1 3/4)				
LNAV MDA	2140-1 438 (500-1)	2140-1 1/4 438 (500-1 1/4)	2140-1 1/2 438 (500-1 1/2)		
CIRCLING	2200-1 484 (500-1)	2240-1 524 (600-1)	2800-3 1084 (1100-3)		

MINOT, NORTH DAKOTA  
Amdt 1E 07OCT21

48°15'N-101°17'W

# RNAV (GPS) RWY 13

NC-1, 07 AUG 2025 to 04 SEP 2025

NC-1, 07 AUG 2025 to 04 SEP 2025