

MINOT, NORTH DAKOTA

AL-635 (FAA)

25219

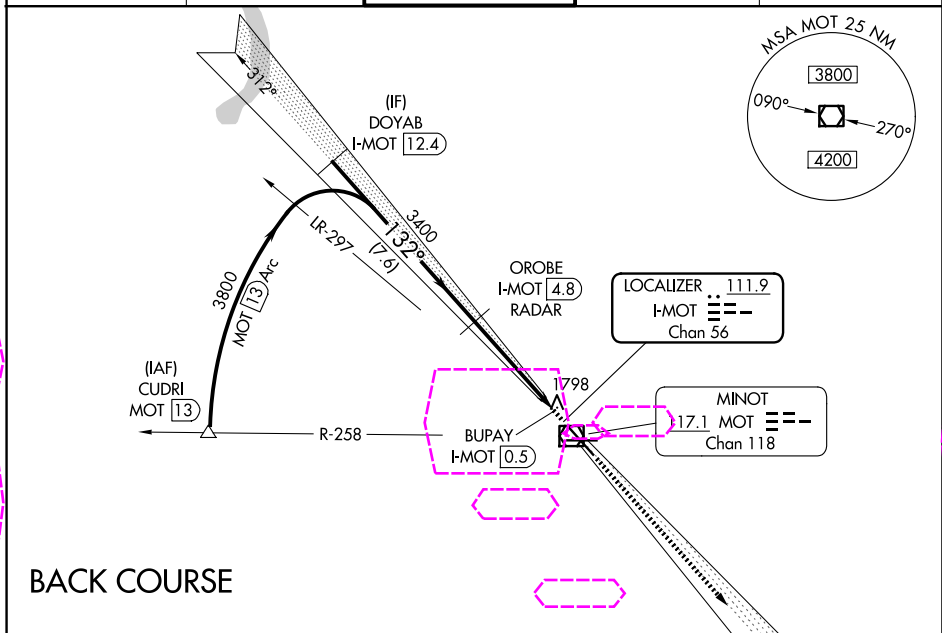
LOC/DME I-MOT 111.9 Chan 56	APP CRS 132°	Rwy Ldg 7700 TDZE 1702 App Elev 1716
---	------------------------	---

LOC BC RWY 13

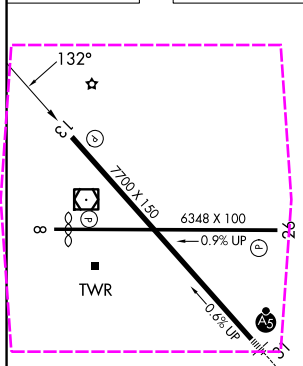
MINOT INTL (MOT)

DME required		MISSED APPROACH: Climb to 3700 on I-MOT SE course to HEKTA/I-MOT 13.6 DME/RADAR and hold.		
--------------	--	--	--	--

ASOS 118.725	MINOT APP CON ★ 119.6 363.8	MAGIC CITY TOWER ★ 118.2 (CTAF) 0 251.125	GND CON 121.9	UNICOM 122.95
------------------------	---------------------------------------	---	-------------------------	-------------------------



ELEV 1716	D	TDZE 1702
-----------	----------	-----------



REIL Rwy 13
REIL Rws 8 and 26
HIRL Rws 8-26 and 13-31

Disregard glide slope indications. Use I-MOT DME when on LOC course.			
DOYAB I-MOT 12.4	3800	132°	3700 ↑ I-MOT SE CRS
OROBE I-MOT 4.8 RADAR	3400	3.05° TCH 49	HEKTA I-MOT 13.6
BUPAY I-MOT 0.5	0.8		
7.6 NM 4.3 NM 0.8			
CATEGORY	A	B	C
S-LOC 13	2060-1 358 (400-1)		
CIRCLING	2200-1 484 (500-1)	2240-1 524 (600-1)	2800-3 1084 (1100-3)

MINOT, NORTH DAKOTA
Amdt 8C 07OCT21

48°15'N-101°17'W

MINOT INTL (MOT)
LOC BC RWY 13