


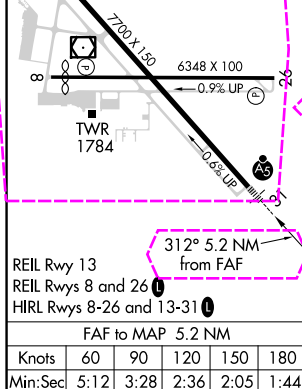
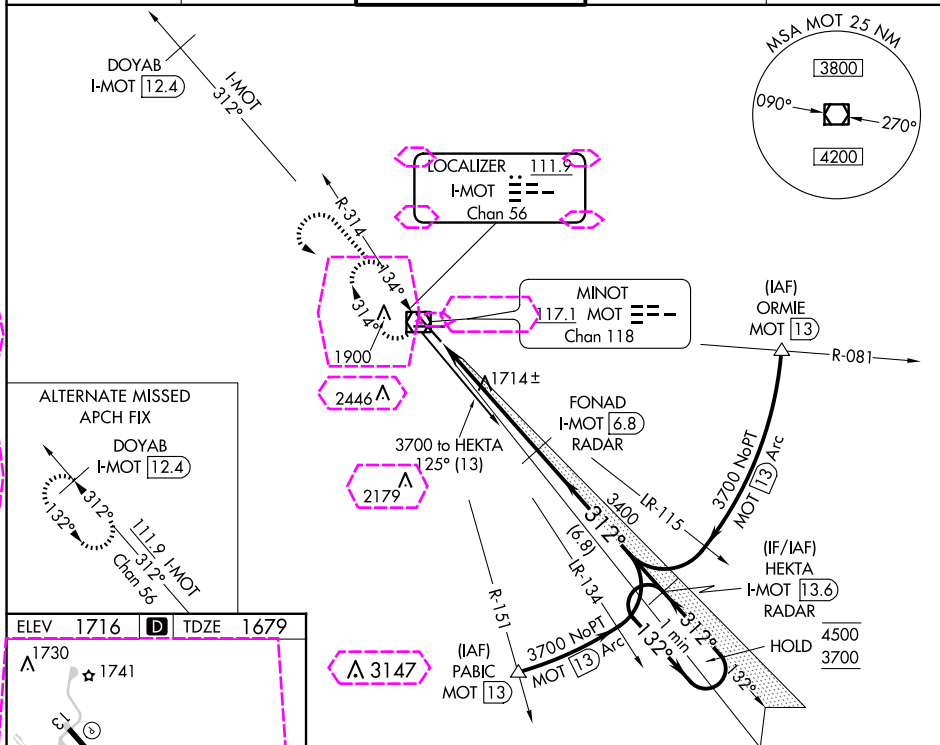


LOC/DME I-MOT 111.9 Chan 56	APP CRS 312°	Rwy Idg 7700 TDZE 1679 Apt Elev 1716
---	------------------------	---

ILS or LOC RWY 31
MINOT INTL (MOT)

DME or RADAR required.			MISSED APPROACH: Climb to 3700 then left turn direct MOT VOR/DME and hold.
 For Inop ALS, increase S-ILS 31 Cat E visibility to RVR 4000, and S-LOC 31 Cat C, D and E visibility to RVR 4500.  Autopilot coupled approach NA below 2500.			
ASOS 118.725	MINOT APP CON ★ 119.6 363.8	MAGIC CITY TOWER ★ 118.2 (CTAF) 0 251.125	GND CON 121.9
			UNICOM 122.95



3700 ↑	MOT 	Use I-MOT DME when on the LOC course.	FONAD I-MOT <u>6.8</u> RADAR	HEKTA I-MOT <u>13.6</u> RADAR	One Minute Holding Pattern																								
<table border="1"> <thead> <tr> <th>CATEGORY</th> <th>A</th> <th>B</th> <th>C</th> <th>D</th> <th>E</th> </tr> </thead> <tbody> <tr> <td>S-ILS 31</td> <td colspan="5">1879/24 200 (200-½)</td> </tr> <tr> <td>S-LOC 31</td> <td colspan="3">1980/24 301 (300-½)</td> <td colspan="2">1980/40 301 (300-¾)</td> </tr> <tr> <td>CIRCLING</td> <td>2200-1 484 (500-1)</td> <td>2240-1 524 (600-1)</td> <td colspan="3">2800-3 1084 (1100-3)</td> </tr> </tbody> </table>						CATEGORY	A	B	C	D	E	S-ILS 31	1879/24 200 (200-½)					S-LOC 31	1980/24 301 (300-½)			1980/40 301 (300-¾)		CIRCLING	2200-1 484 (500-1)	2240-1 524 (600-1)	2800-3 1084 (1100-3)		
CATEGORY	A	B	C	D	E																								
S-ILS 31	1879/24 200 (200-½)																												
S-LOC 31	1980/24 301 (300-½)			1980/40 301 (300-¾)																									
CIRCLING	2200-1 484 (500-1)	2240-1 524 (600-1)	2800-3 1084 (1100-3)																										

MINOT, NORTH DAKOTA

AL-635 (FAA)

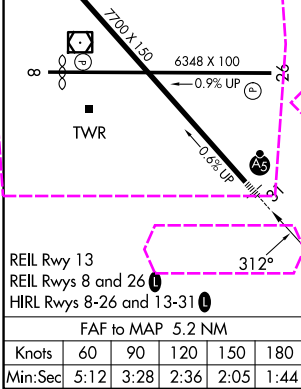
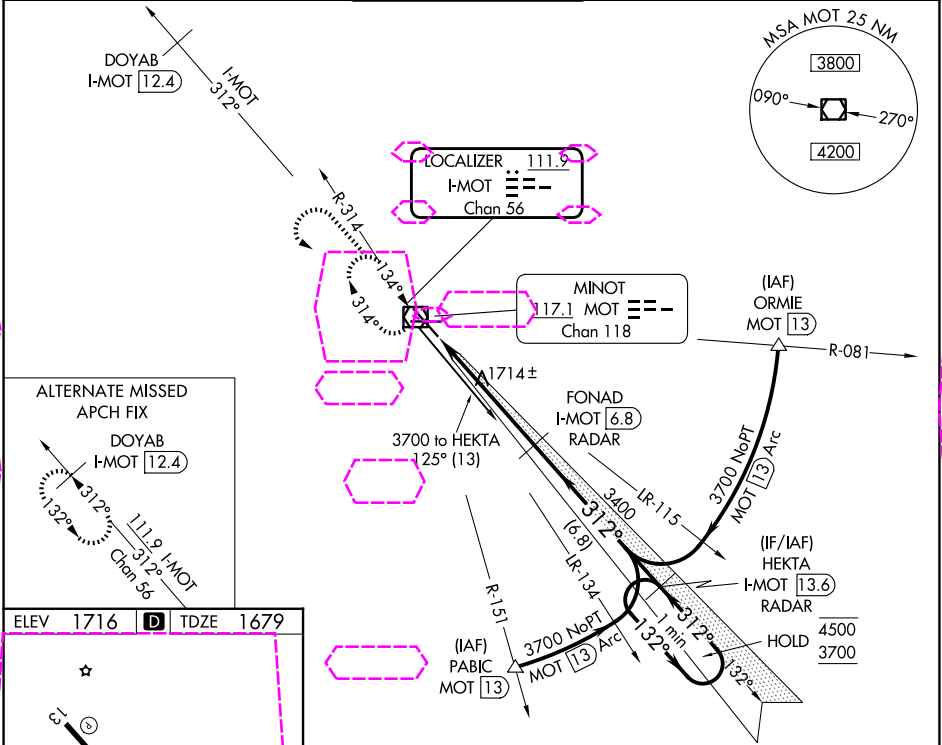
25219

LOC/DME I-MOT 111.9 Chan 56	APP CRS 312°	Rwy Ldg TDZE 1679 Apt Elev 1716
---	------------------------	---

ILS or LOC RWY 31
MINOT INTL (MOT)

DME or RADAR required.	MALSR	MISSED APPROACH: Climb to 3700 then left turn direct MOT VOR/DME and hold.
For Inop ALS, increase S-ILS 31 Cat E visibility to RVR 4000, and S-LOC 31 Cat C, D and E visibility to RVR 4500. Autopilot coupled approach NA below 2500.		

ASOS 118.725	MINOT APP CON * 119.6 363.8	MAGIC CITY TOWER * 118.2 (CTAF) 0 251.125	GND CON 121.9	UNICOM 122.95
------------------------	---------------------------------------	---	-------------------------	-------------------------



3700 ↑	MOT 	Use I-MOT DME when on the LOC course. FONAD I-MOT <u>6.8</u> RADAR	HEKTA I-MOT <u>13.6</u> RADAR	One Minute Holding Pattern
<div><div>*LOC only. I-MOT <u>1.6</u></div><div>*I-MOT <u>2.5</u></div><div></div></div>				

MINOT, NORTH DAKOTA
Amdt 10C 07OCT21

48°15'N-101°17'W

MINOT INTL (MOT)
ILS or LOC RWY 31

NC-1, 07 AUG 2025 to 04 SEP 2025

NC-1, 07 AUG 2025 to 04 SEP 2025