





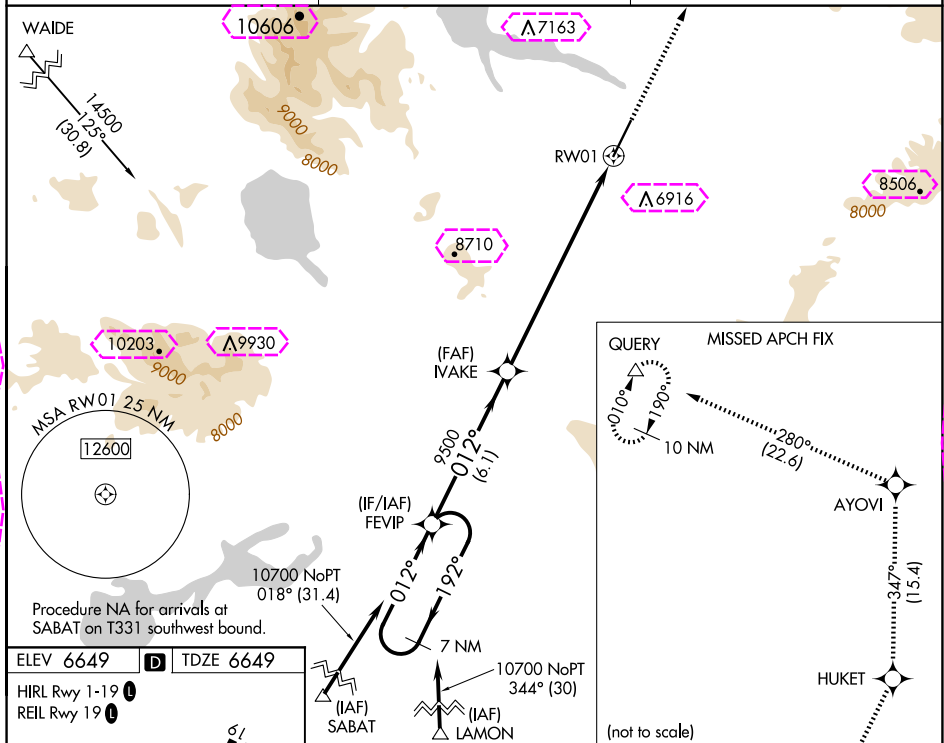


WAAS CH 86916 W01A	APP CRS 012°	Rwy Idg 8400 TDZE 6649 Apt Elev 6649
--	------------------------	---

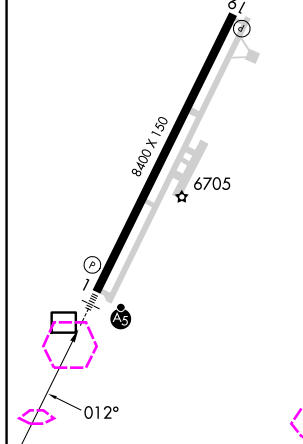
RNAV (GPS) RWY 1
YELLOWSTONE (WYS)

  	<p>DME/DME RNP-0.3 NA. Obtain local altimeter setting on CTAF; when not received, procedure NA. Inop table does not apply to LNAV Cats A and B.</p>	  	<p>MISSED APPROACH: Climb to 15000 direct HUKET and on track 347° to AYOMI and on track 280° to QUERY and hold.</p>
---	---	---	---

AWOS-3P 118.1	SALT LAKE CENTER 132.4 338.3	UNICOM 123.0 (CTAF) 0
-------------------------	--	--



ELEV 6649	D	TDZE 6649
HIRL Rwy 1-19 L		
REIL Rwy 19 L		



7 NM Holding Pattern FEVIP		10700 ← 192° 012° →		IVAKE 9500	15000 ↑ HUKET	tr 347° AYOVI	tr 280° QUERY	* LNAV only
GP 3.00° TCH 50		012°		9500	* 4.8 NM to RW01	RW01		
		6.1 NM		3.8 NM	4.8 NM			
CATEGORY	A		B		C		D	
LPV DA	6849-1½ 200 (200-½)							
LNAV MDA	8240-1¼ 1591 (1600-1¼)		8240-1½ 1591 (1600-1½)		8240-2½ 1591 (1600-2½)			
	8240-1¼ 1591 (1600-1¼)		8240-1½ 1591 (1600-1½)		8240-3 1591 (1600-3)			
CIRCLING								

WEST YELLOWSTONE, MONTANA

AL-632 (FAA)

25219

WAAS CH 86916 W01A	APP CRS 012°	Rwy Ldg TDZE 6649 Apt Elev 6649
--	------------------------	---

RNAV (GPS) RWY 1

YELLOWSTONE (WYS)

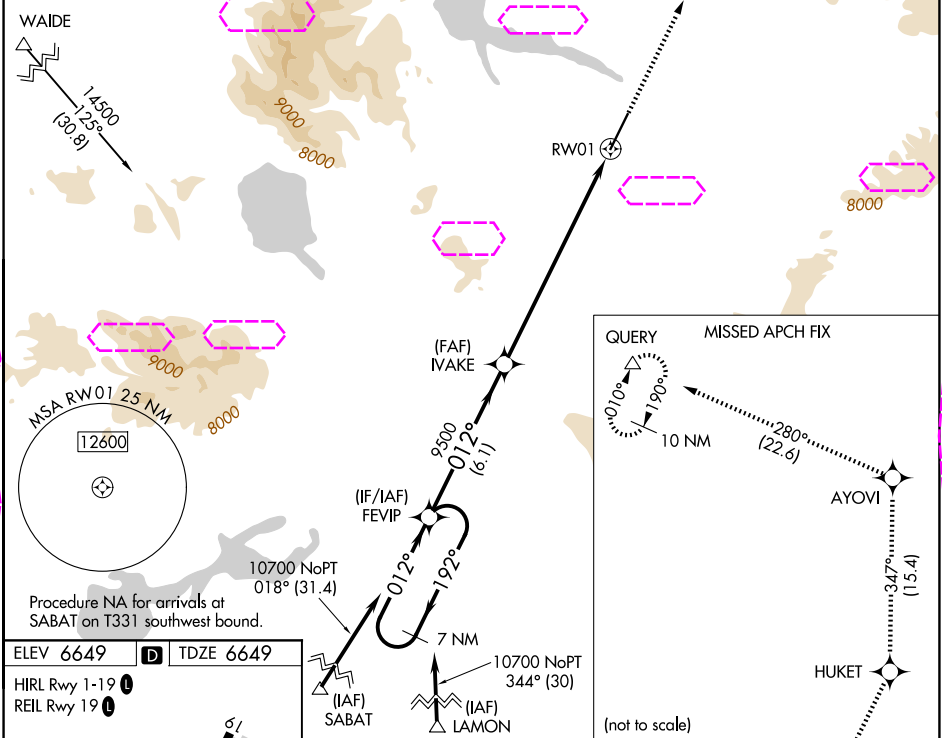
NA
-19°C

DME/DME RNP-0.3 NA. Obtain local altimeter setting on CTAF; when not received, procedure NA. Inop table does not apply to LNAV Cats A and B.

MALSR
A5

MISSED APPROACH: Climb to 15000 direct HUKET and on track 347° to AYОВI and on track 280° to QUERY and hold.

AWOS-3P 118.1	SALT LAKE CENTER 132.4 338.3	UNICOM 123.0 (CTAF)
-------------------------	--	-------------------------------



ELEV 6649	D	TDZE 6649
HIRL Rwy 1-19		
REIL Rwy 19		

7 NM Holding Pattern FEVIP		15000 HUKET	AYОВI	QUERY
10700 ← 192°		↑	tr 347°	tr 280°
012° →		* LNAV only		
GP 3.00° TCH 50		* 4.8 NM to RW01		
9500		RW01		
6.1 NM		3.8 NM	4.8 NM	
CATEGORY	A	B	C	D
LPV DA	6849-1/2 200 (200-1/2)			
LNAV MDA	8240-1 1/4 1591 (1600-1 1/4)	8240-1 1/2 1591 (1600-1 1/2)	8240-2 1/2 1591 (1600-2 1/2)	
CIRCLING	8240-1 1/4 1591 (1600-1 1/4)	8240-1 1/2 1591 (1600-1 1/2)	8240-3 1591 (1600-3)	

WEST YELLOWSTONE, MONTANA

Orig-B 23APR20

44°41'N-111°07'W

YELLOWSTONE (WYS)

RNAV (GPS) RWY 1

NW-1, 07 AUG 2025 to 04 SEP 2025

NW-1, 07 AUG 2025 to 04 SEP 2025