

WEST YELLOWSTONE, MONTANA

AL-632 (FAA)

25107

LOC I-LOW	APP CRS	Rwy Idg	8400
110.7	012°	TDZE	6649
		Apt Elev	6649

ILS or LOC RWY 1

YELLOWSTONE (WYS)

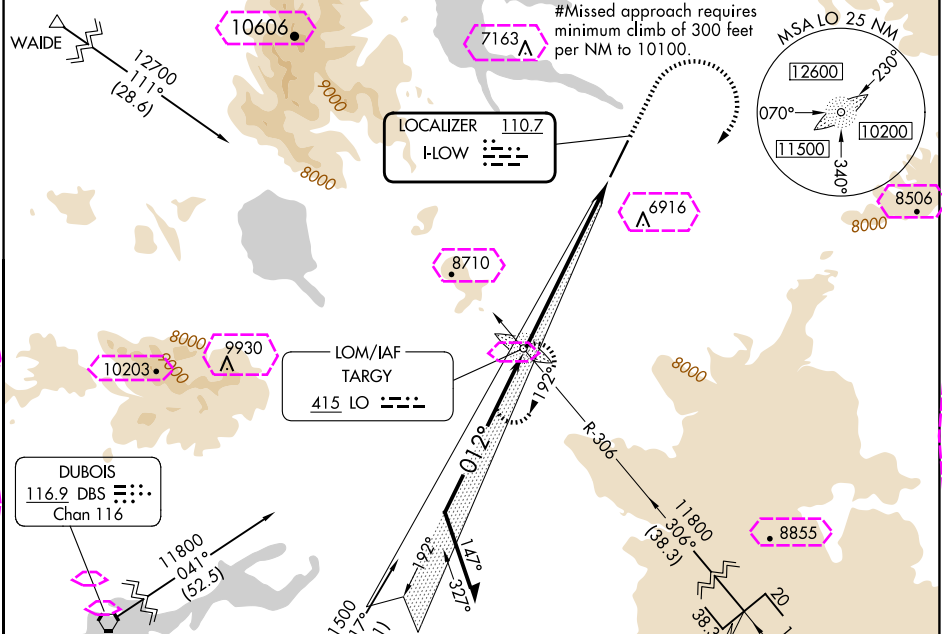
ADF required. DME required for MUPDE stepdown fix.

MALSR
NA
-20°C

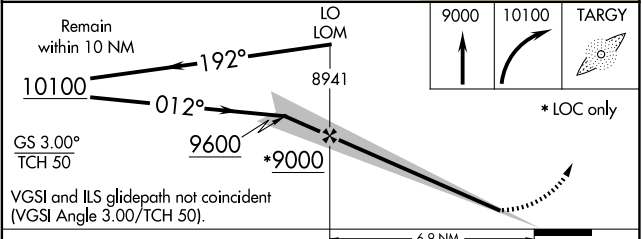
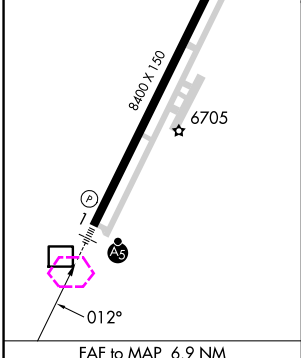
Obtain local altimeter setting on CTAF, when not received procedure NA. Inoperative table does not apply to S-LOC 1 Cat A. For inoperative MALSR, increase S-ILS 1 all Cats visibility to 2 3/4 mile.

MISSED APPROACH: Climb to 9000, then climbing right turn to 10100 direct TARGY LOM and hold.

AWOS-3P 118.1	SALT LAKE CENTER 132.4 338.3	UNICOM 123.0 (CTAF)
------------------	---------------------------------	------------------------



ELEV 6649	TDZE 6649
HIRL Rwy 1-19	REIL Rwy 19



CATEGORY	A	B	C	D
S-ILS 1#		6849-1/2	200 (200-1/2)	
S-ILS 1		7449-2 1/4	800 (800-2 1/4)	
S-LOC 1	7780-1 1/4 1131 (1200-1 1/4)	7780-1 1131 (1200-1)	7780-2 1/2 1131 (1200-2 1/2)	
	7780-1 1/4 1131 (1200-1 1/4)	7780-1 1/2 1131 (1200-1 1/2)	7780-3 1131 (1200-3)	8020-3 1371 (1400-3)

WEST YELLOWSTONE, MONTANA

AL-632 (FAA)

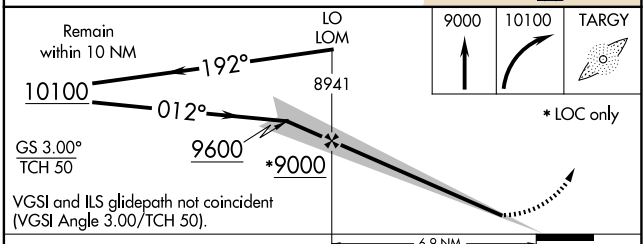
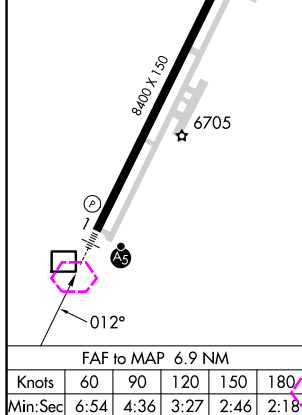
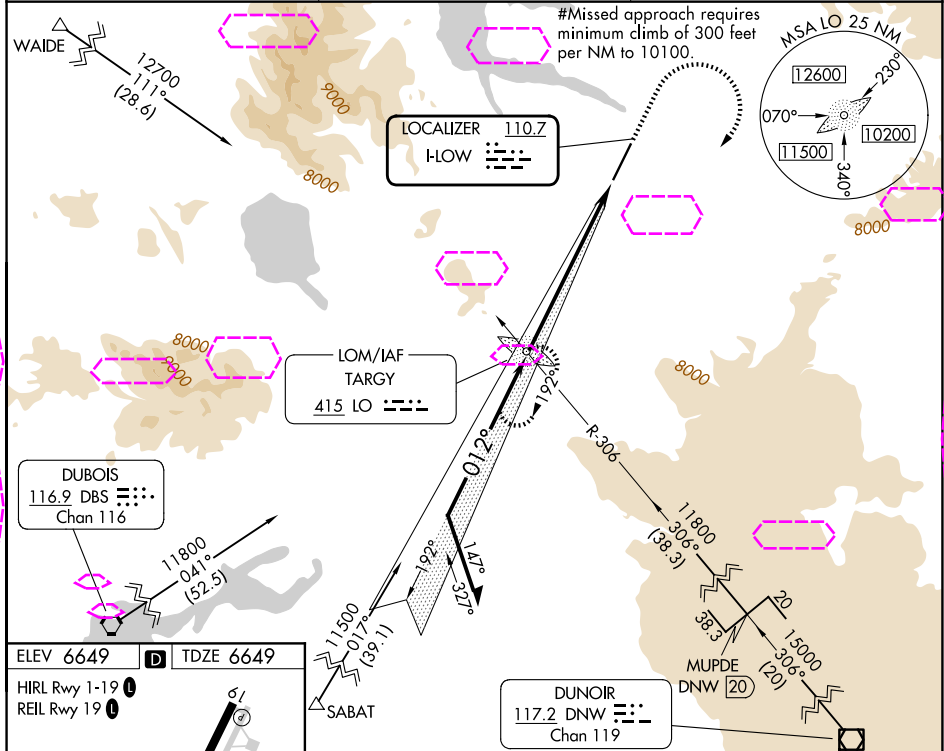
25219

LOC I-LOW 110.7	APP CRS 012°	Rwy Ldg TDZE Apt Elev	8400 6649 6649
---------------------------	------------------------	-----------------------------	---

ILS or LOC RWY 1 YELLOWSTONE (WYS)

ADF required. DME required for MUPDE stepdown fix.		MALSR 	MISSED APPROACH: Climb to 9000, then climbing right turn to 10100 direct TARGY LOM and hold.
NA Obtain local altimeter setting on CTAF, when not received procedure NA. Inoperative table does not apply to S-LOC 1 Cat A. For inoperative MALSR, increase S-ILS 1 all Cats visibility to 2 3/4 mile.			

AWOS-3P 118.1	SALT LAKE CENTER 132.4 338.3	UNICOM 123.0 (CTAF)
-------------------------	--	-------------------------------



CATEGORY	A	B	C	D
S-ILS 1#		6849-1/2	200 (200-1/2)	
S-ILS 1		7449-2 1/4	800 (800-2 1/4)	
S-LOC 1	7780-1 1/4 1131 (1200-1 1/4)	7780-1 1131 (1200-1)	7780-2 1/2 1131 (1200-2 1/2)	
	7780-1 1/4 1131 (1200-1 1/4)	7780-1 1/2 1131 (1200-1 1/2)	7780-3 1131 (1200-3)	8020-3 1371 (1400-3)

WEST YELLOWSTONE, MONTANA
Amdt 4B 15JUL21

44°41'N-111°07'W

YELLOWSTONE (WYS) ILS or LOC RWY 1

NW-1, 07 AUG 2025 to 04 SEP 2025

NW-1, 07 AUG 2025 to 04 SEP 2025